



Fluke 77 Series III Range/Hold Buttons Replacement

Replace the range/hold buttons on the Fluke 77 Series III multimeter.

Written By: Jessica Bombardier Shaw



INTRODUCTION

If the range or hold button is not working properly, they might be jammed from over-use or improperly installed. Both of these buttons are attached, so if you want to replace one of the buttons you must replace both at once. This guide will show you how.



TOOLS:

- [Phillips #2 Screwdriver](#) (1)
- [iFixit Opening Tools](#) (1)



PARTS:

- [Fluke 77 Series III Multimeter Range Hold Buttons](#) (1)

Step 1 — Front Panel



- ⚠ Be sure any test leads are out and the multimeter is off before opening the device.
- Turn the multimeter so it is display side down.
- Lift up the back stand of the device by putting your thumb in the curved well at the bottom of the device, so you have access to the two covered screws below.

Step 2



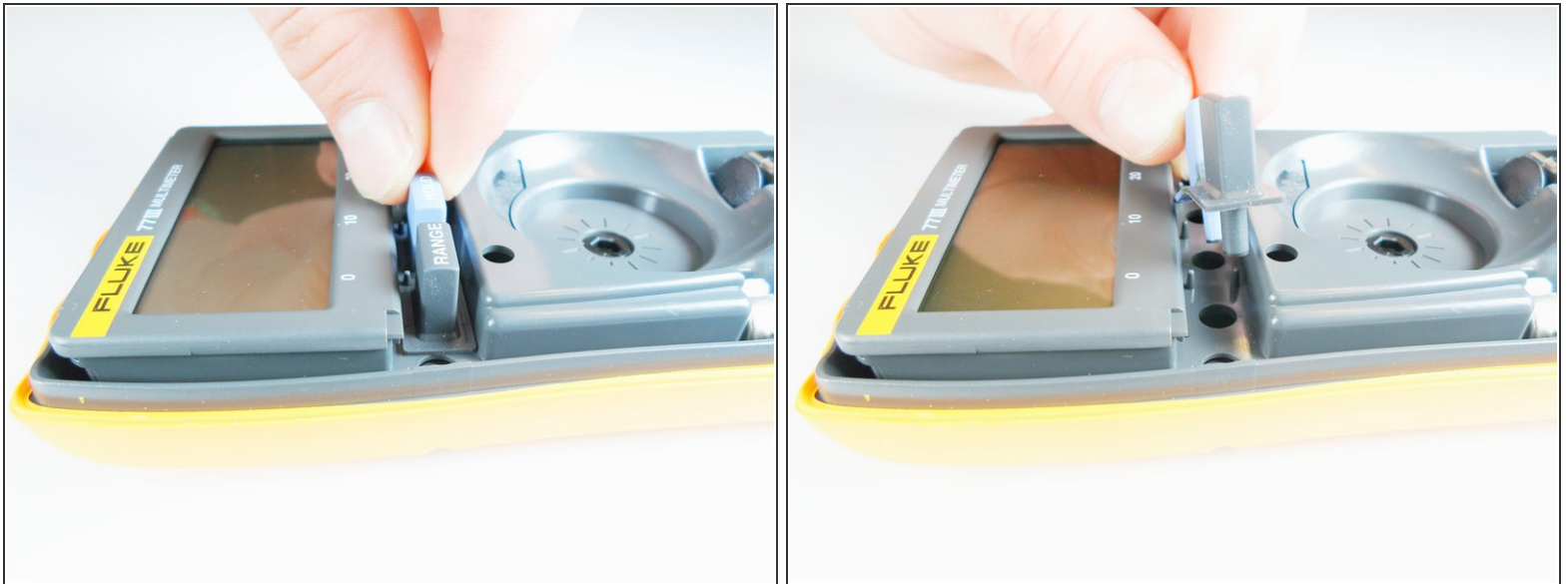
- Use your Phillips #2 Screwdriver to remove the four black 21 mm Phillips #2 screws.

Step 3



- Turn the Fluke 77 Series III Multimeter back over so that it is display side up.
- Pry the front panel from the back panel at the seam.
- If the front panel does not come off easily, move a plastic opening tool along the seam until the panels separate completely.

Step 4 — Range/Hold Buttons



- Locate the rubber range and hold buttons in the internal assembly. These are found just below the LCD screen on the left hand side.
- ⓘ The buttons are attached so they will come out of the multimeter as a single part.
- Remove the rubber range and hold button part with your thumb and forefinger.

To reassemble your device, follow these instructions in reverse order.