



# Durofix RV332 Battery Replacement

This guide shows step by step instructions for replacing the screwdriver battery.

Written By: Brennan Wade



---

# INTRODUCTION

Part # INR18650-13P

---

## TOOLS:

- [iFixit Opening Tools](#) (1)
  - [Phillips #0 Screwdriver](#) (1)
  - [Soldering Iron](#) (1)
  - [Solder](#) (1)
  - [Flush Wire Cutters](#) (1)
  - [Wire cutters/side cutters](#) (1)
  - [Electrical Tape in 6 Assorted Colors](#) (1)
-

## Step 1 — Battery



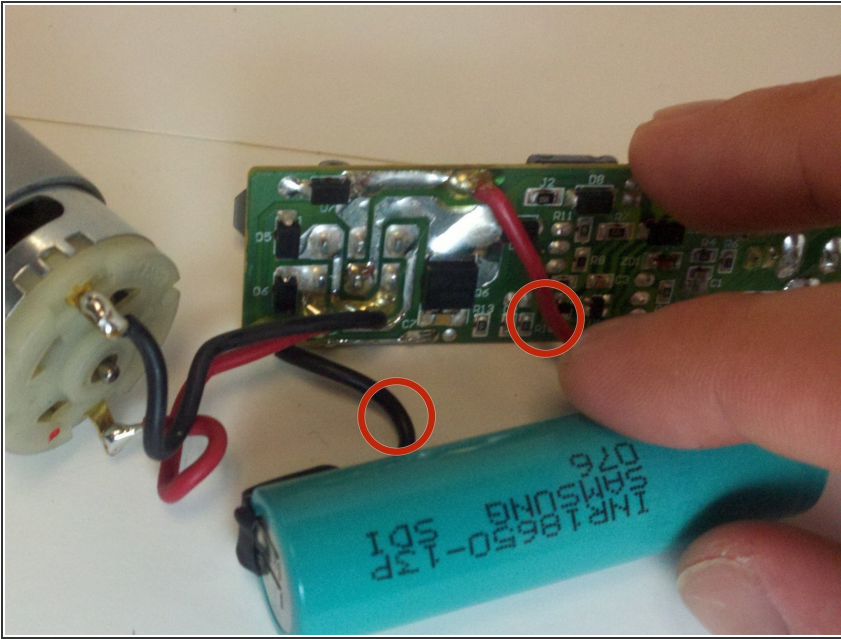
- Remove the six 13mm case screws with a #0 phillips screwdriver.
- Separate the screwdriver housing with a plastic opening tool.
- Remove battery casing half to expose screwdriver internals.

## Step 2



- Locate battery
- Remove battery, printed circuit board, LED, and motor assembly from screwdriver casing.

### Step 3



- Using side cutters, cut the red and black wires connecting the battery to the printed circuit board just after the shrink wrap tubing.
- Strip the ends of the wires attached to the printed circuit board 1/4 inch above the ends of the cut wires.
- Solder the new battery to the stripped wires attached to the printed circuit board.
- Wrap the newly soldered connections with electrical tape.

To reassemble your device, follow these instructions in reverse order.