



Toshiba Satellite P205-S8811 Keyboard Replacement

This guide will demonstrate how to replace the keyboard.

Written By: Andrew Meyer



INTRODUCTION

If your keyboard is malfunctioning and you want to replace it, or you need to take it out to get to a part underneath it, then use this guide to learn how to do so.

TOOLS:

- [iFixit Opening Tools](#) (1)
 - [Phillips #1 Screwdriver](#) (1)
-

Step 1 — Battery



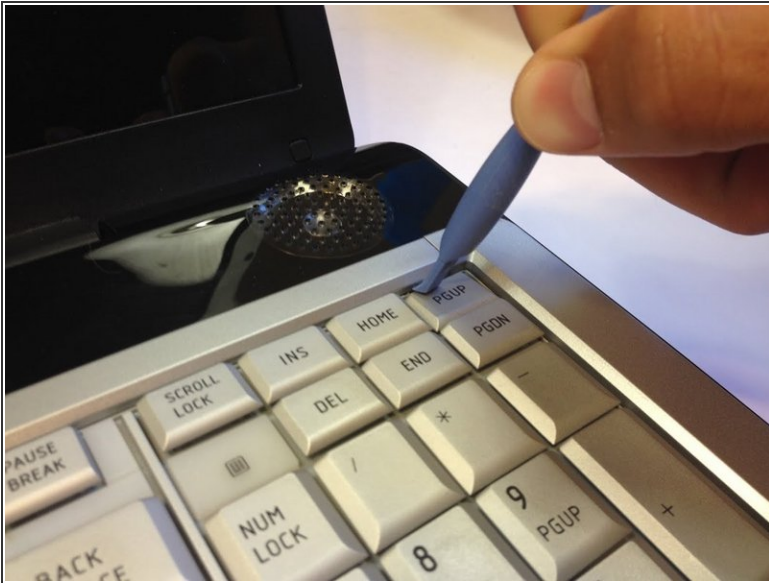
- Flip the laptop over so the bottom is facing upward and the battery is on top.
- Slide the tab below the battery to the left.

Step 2



- Slide and hold the tab on the right side of the battery to the right.
- While holding the right tab, slide the battery upward and out its socket.

Step 3 — Keyboard



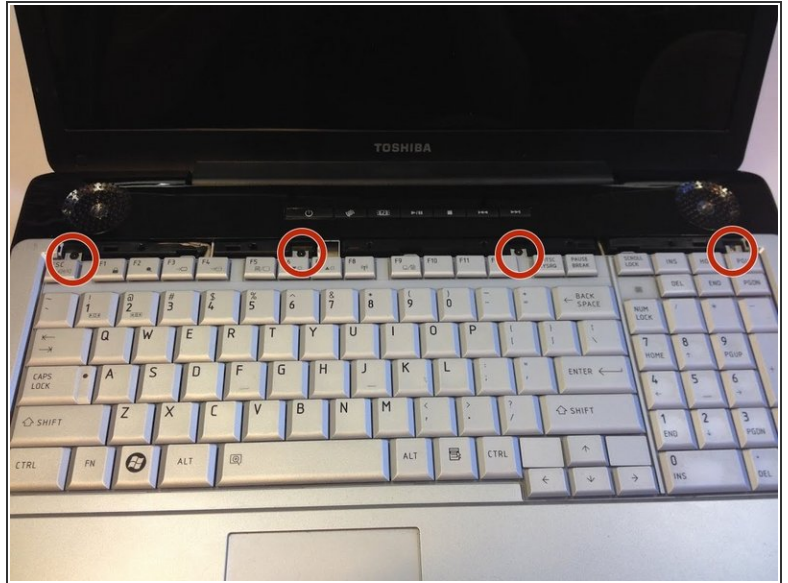
- Place the head of a plastic opening tool underneath the plastic strip lining the top of the keyboard, right above the "PGUP" button.
- Next, pull the strip up using a plastic opening tool with a light force, until it pops off.

Step 4



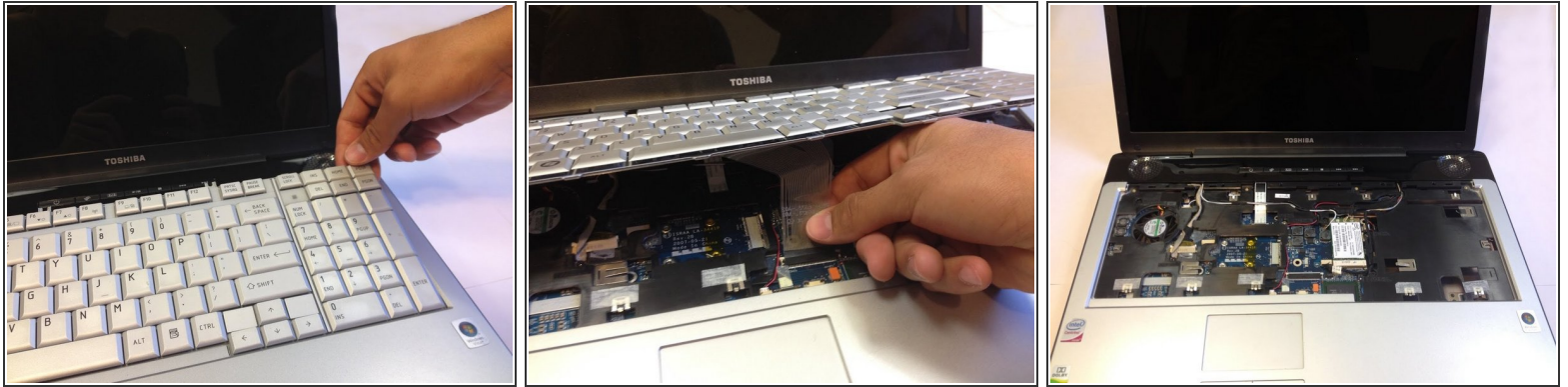
- Lightly lift from the side that was popped up earlier in order to pop the rest of the strip off of the laptop.

Step 5



- Use a #1 Phillips screwdriver to take out the four 4mm Phillips #1 screws that were underneath the plastic strip.

Step 6



⚠ Be careful to not lift up on the keyboard too quickly or harshly; there is a ribbon cable connecting the keyboard and the base which may be breakable.

- Lightly lift up on the keyboard from one of its top corners and pull it towards the screen so you can safely remove the ribbon cable.
- At the base of the ribbon cable, there is a tiny tab that runs across the width of the connector. Flip it up. You can now pull the ribbon cable free with no resistance towards the monitor.
- With the cable unplugged, the keyboard can be lifted away from the laptop.

To reassemble your device, follow these instructions in reverse order.