



Samsung Galaxy S2 I9100 Screen Replacement

Written By: AndreaBaglione



INTRODUCTION

Galaxy SII Screen Replacement Tutorial

TOOLS:

- [Phillips #0 Screwdriver](#) (1)
 - [iFixit Opening Tools](#) (1)
-

Step 1 — Screen



- [Galaxy SII Screen Replacement Tutorial](#)

Step 2



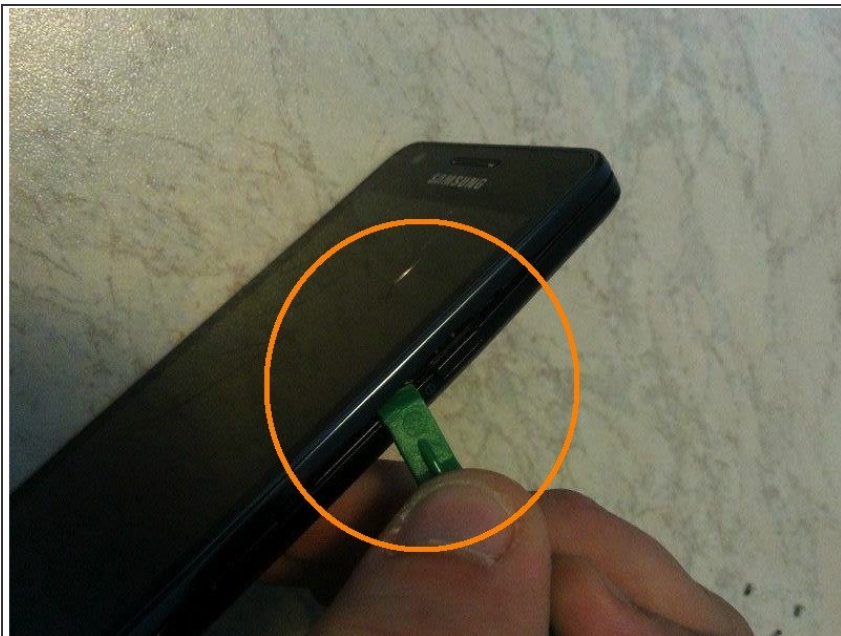
- [Remove battery door and battery](#)

Step 3



- **Remove all screws** on the back of the plastic frame

Step 4



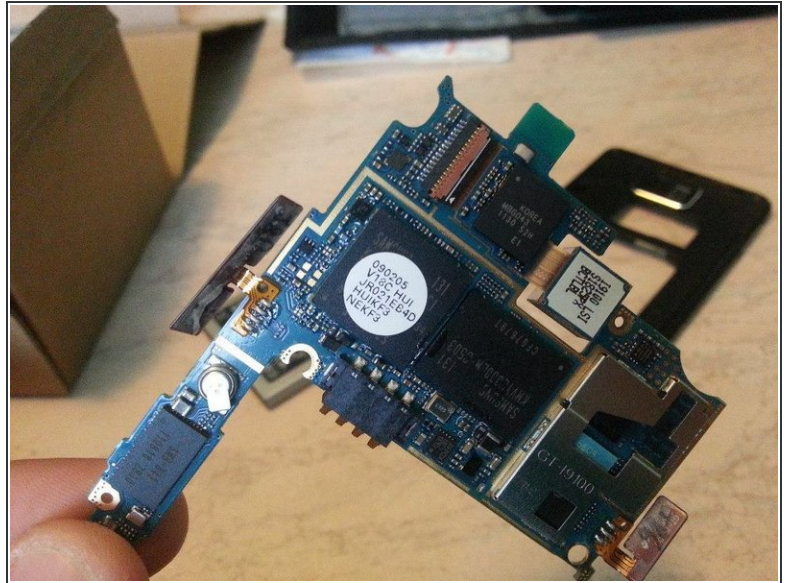
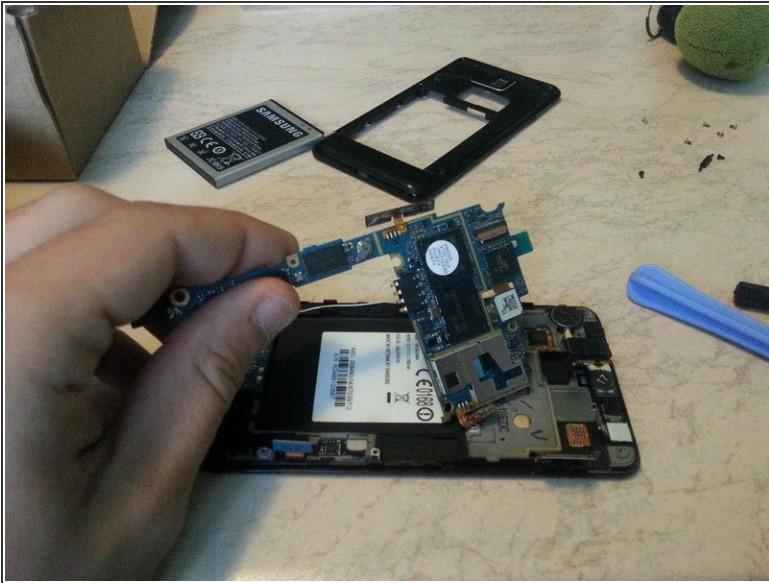
- **Use a plastic tool** to separate the rear frame from the front

Step 5



- Now **disconnect all connectors** on the motherboard, making sure the **front camera and buzzer**. This is attached with the double-sided adhesive. As a precaution, **remove the audio ear speaker**. In all this we will always help with a plastic instrument and a spudger.
- Remove with a thin tool "iSesamo" the **volume rocker** and **power switch** side, these are fixed with adhesive tape

Step 6



- Now we can remove the logic board

Step 7



- Remove the USB connector by unscrewing the two screws. Reinstall the new display starting from this step to number one on the procedure.

To reassemble your device, follow these instructions in reverse order.