



HEC Remote Control Repair Guide

How to repair the LED of the HEC Remote Control.

Written By: Johnson



INTRODUCTION

How to repair the LED of the HEC Remote Control.



TOOLS:

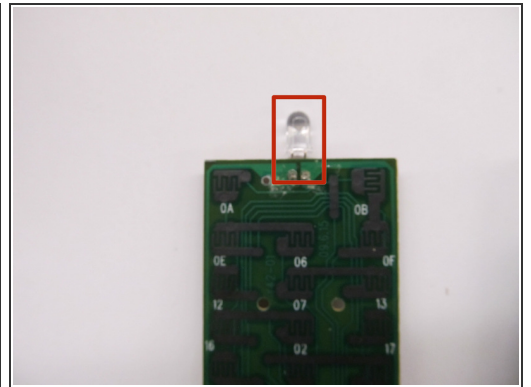
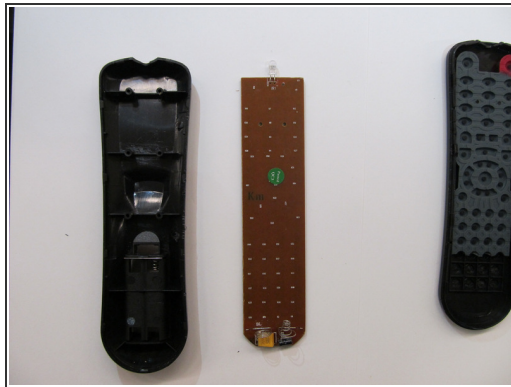
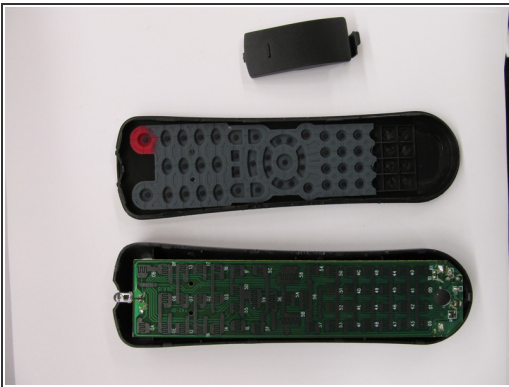
- [Spudger](#) (1)
-

Step 1 — HEC Remote Control Repair Guide



- Use a spudger to open HEC Remote Control

Step 2



- Take apart remote control and remove circuit board
- Solder LED

To reassemble your device, follow these instructions in reverse order.

This document was last generated on 2017-07-07 11:55:35 AM.