

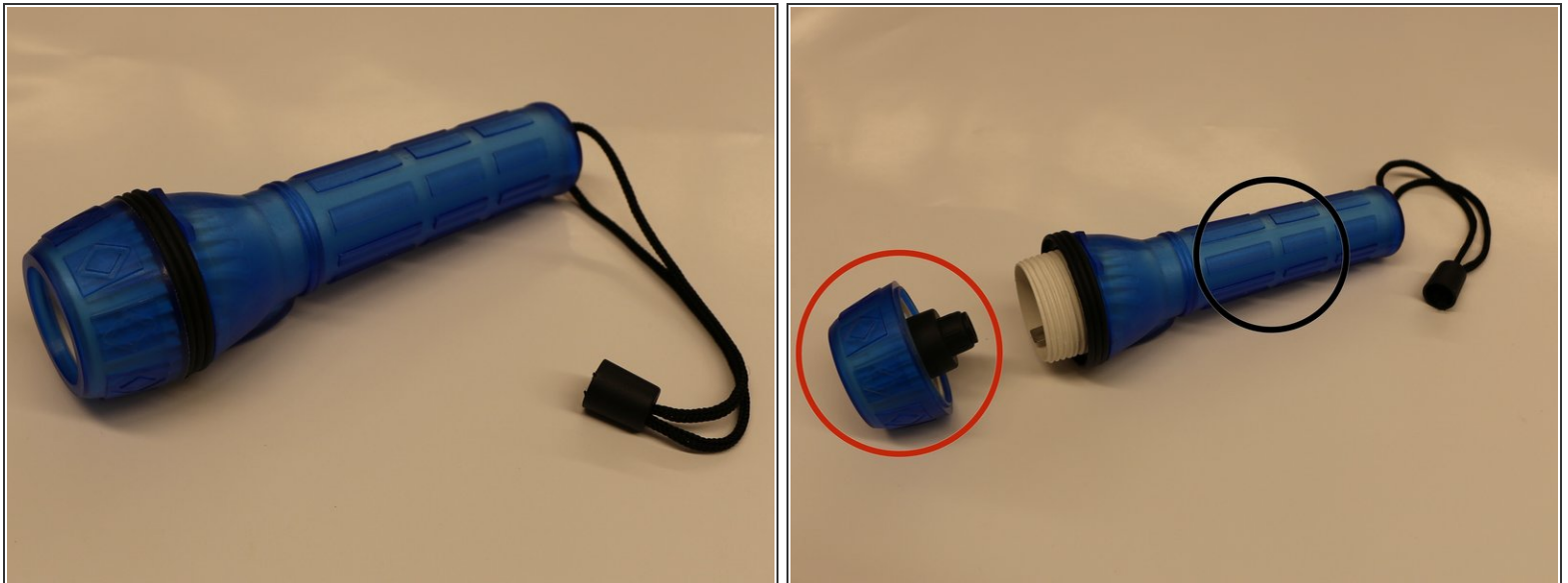


# Disassembling Flashlight Light Bulb Components

Written By: Phillip Phung

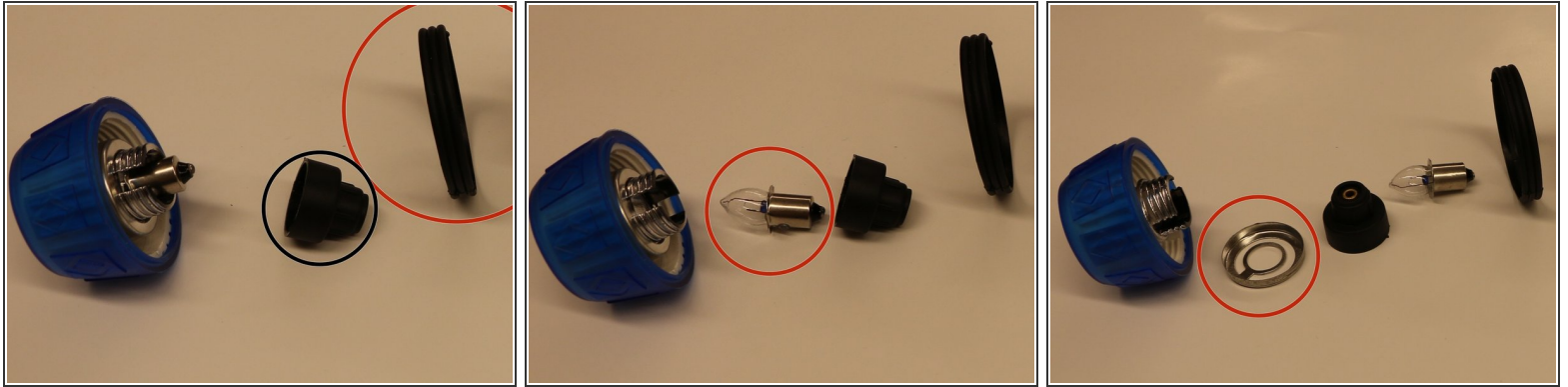


## Step 1 — Disassembling Flashlight Light Bulb Components



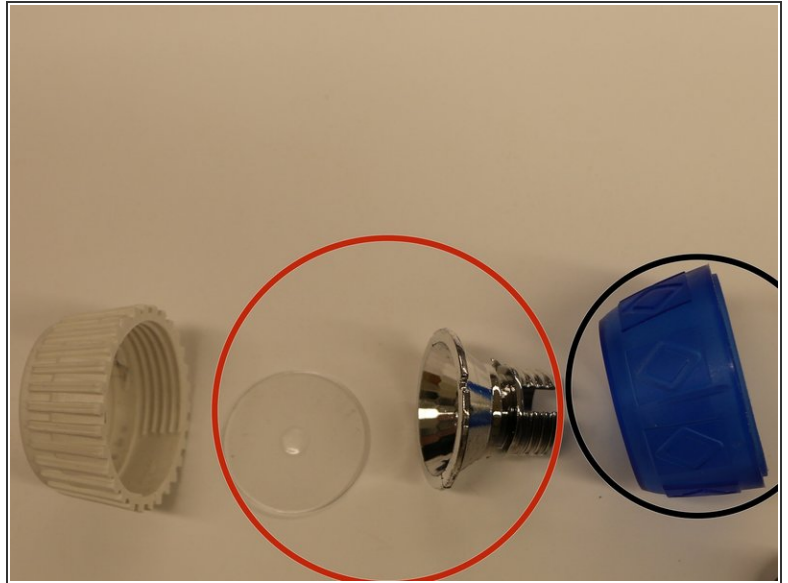
- The translucent flashlight before reverse analysis.
- Twist the light components (red circle) counterclockwise while holding the body of the flashlight (black circle).

## Step 2



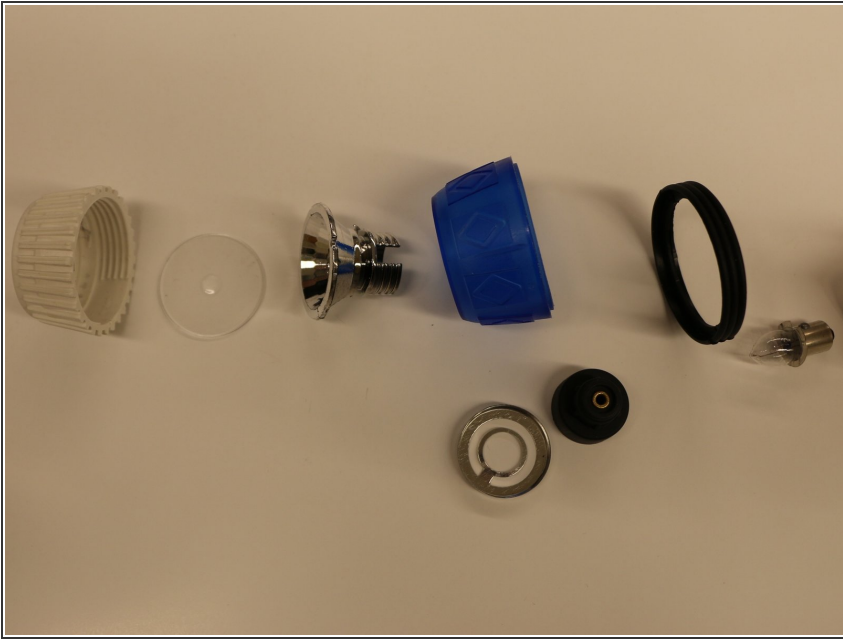
- When removing light component, the black rubber band (red circle) separating body and head falls off. Turn black socket (black circle), which connects bulb to batteries, counterclockwise and disconnect.
- Bulb (red circle) simply pulled out reflector and lens compartment.
- The metal connector (red circle) easily slides out open end when twisting off the black socket. This metal piece connects the metal switch supplying power to the bulb.

### Step 3



- The lens connected to the head of the flashlight comes apart using one thumb/finger. Using two other fingers to hold the head's base, the third thumb/finger pushes the lens in the opposite direction with a force  $>5N$ .
- The remaining lens and light reflector component (red circle) of the flashlight pops out of the unit and separates. Simultaneously, the translucent skin (black circle) attached to the head of the flashlight peels off using hands.

## Step 4



- The complete light bulb component disassembly.

To reassemble your device, follow these instructions in reverse order.