



Disassembling Translucent Rubber Flashlight Battery Power Component

Disassembly of Translucent Flashlight for Analysis or Replacement Parts

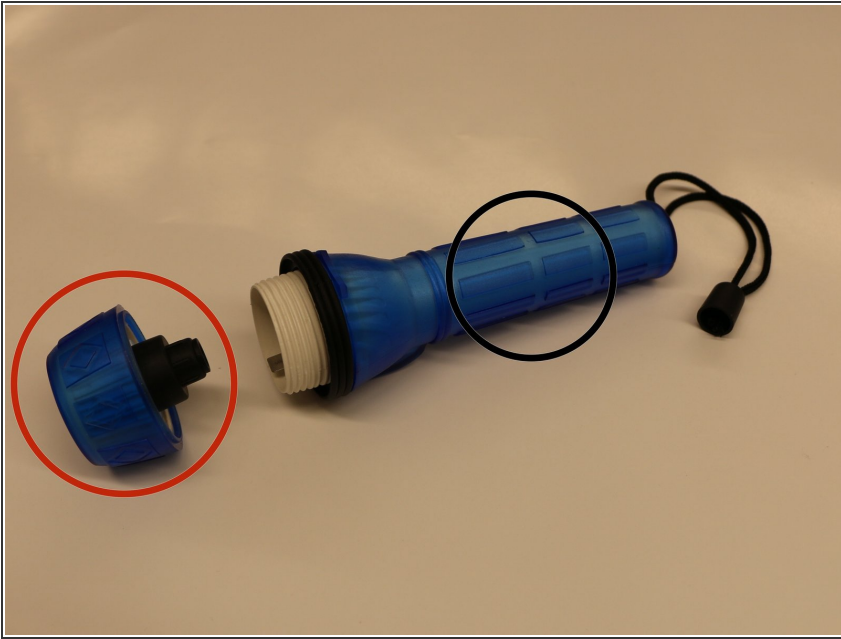
Written By: Phillip Phung



INTRODUCTION

Disassembly of Translucent Flashlight for Analysis or Replacement Parts

Step 1 — Disassembling Translucent Rubber Flashlight Battery Power Component



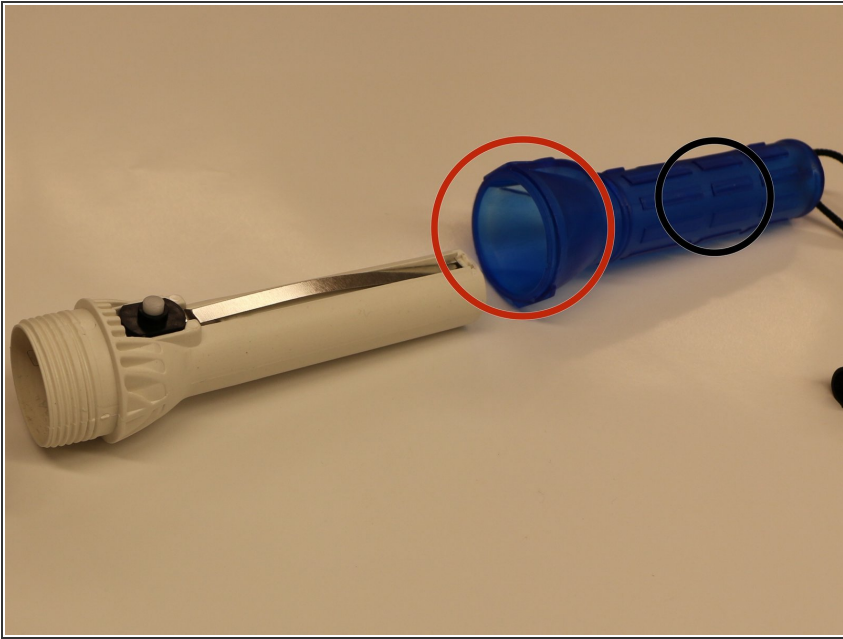
- Remove light mechanism from body containing battery. Twist light bulb (red circle) counterclockwise while holding base of flashlight (black circle).

Step 2



- Angle body of flashlight until two AA batteries fall out. Store battery components.

Step 3



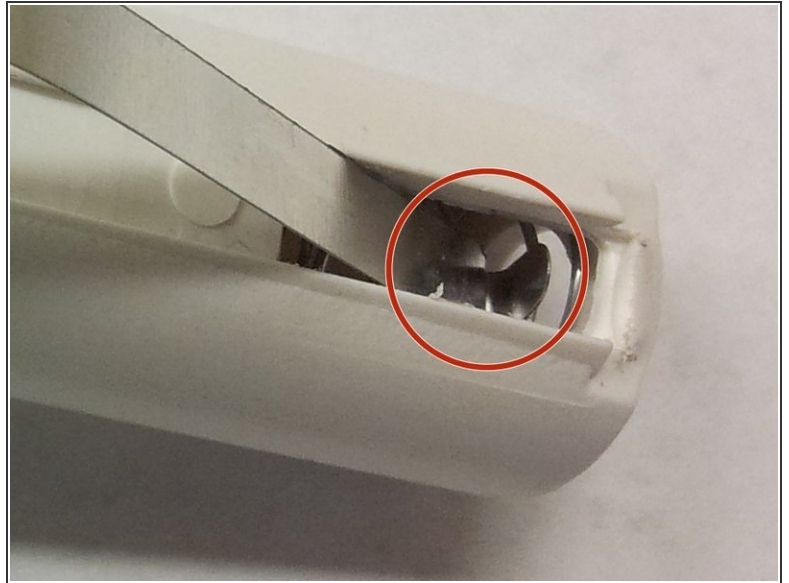
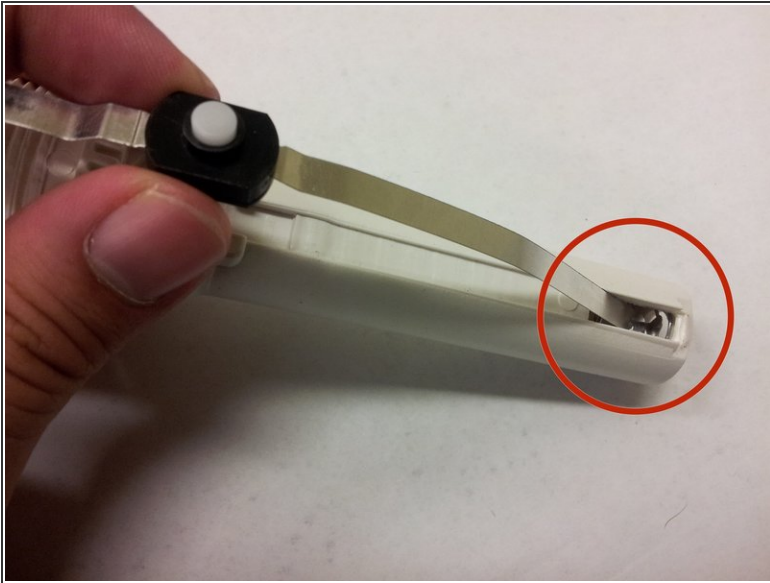
- Pull off rubber chassis of flashlight. Peel back rubber on battery side of flashlight first (red circle). Grip remaining rubber (black circle) and pull off plastic/metal body in direction counter to opening.

Step 4



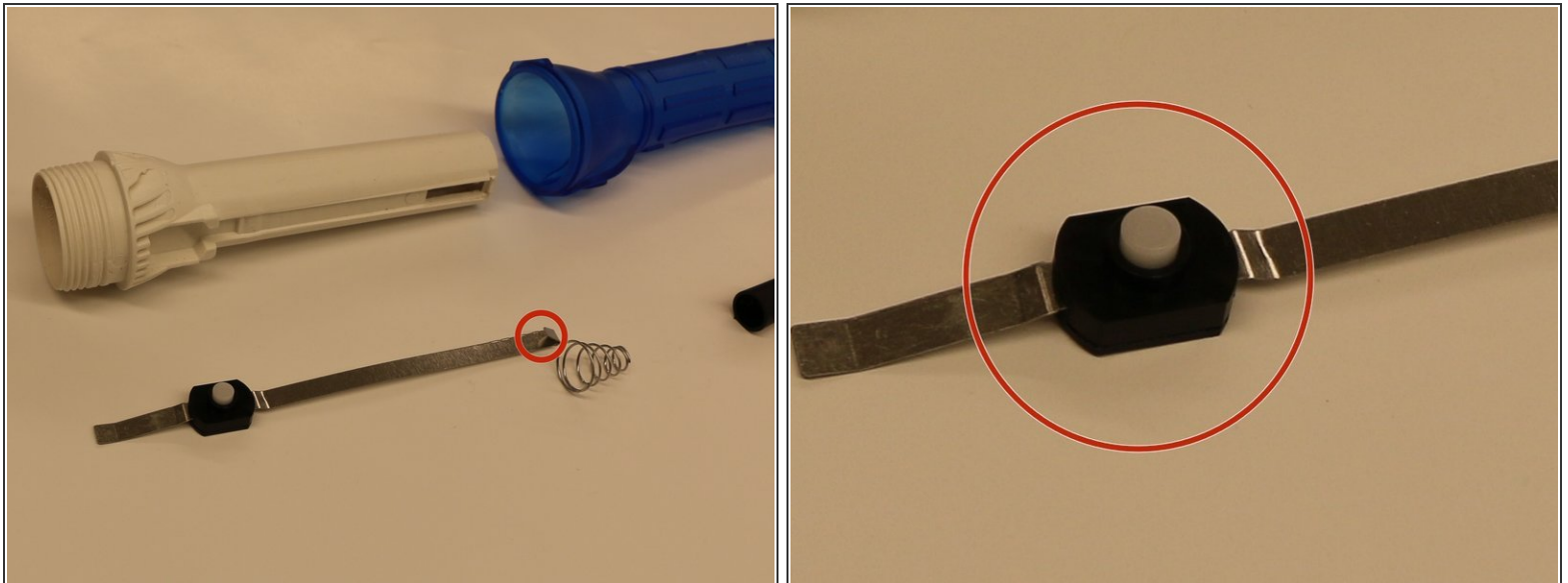
- Remove metal apparatus containing button switch first by bending piece in arc shape. Carefully pull out clipped tip as shown.

Step 5



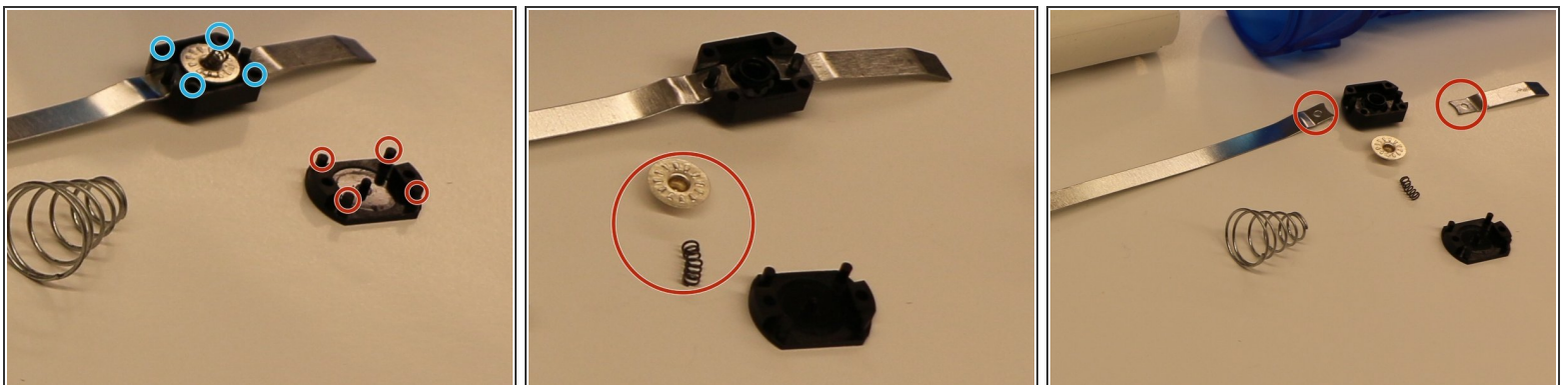
- Using the freed tip, detach the bottom of the metal switch connected to the spring of the grounded/negative end where the AA batteries are located (circle).
- Push metal end into square hole so clip detaches from battery spring (circle). Pull out rest of clip avoiding spring, so metal switch freed from body.

Step 6



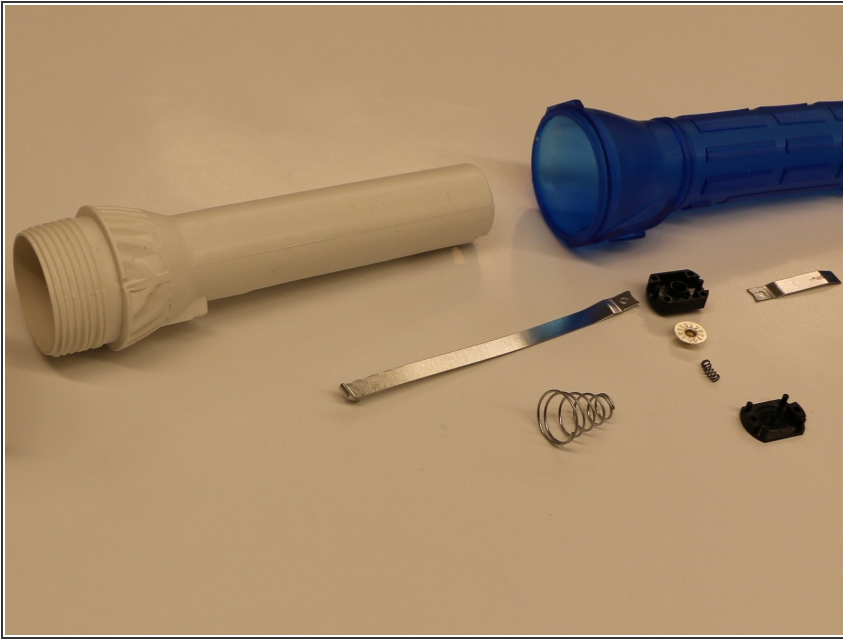
- Spring connected to flashlight base removed using tip of metal switch (circle) hooking and pulling into opening.
- Initiate battery switch disassembly (circle).

Step 7



- The switch mechanism disassembly removes the button attached to the lid (red circle) from the grooves (blue circle) containing the switch components.
- Next, remove the spring first and then metallic, grooved pressure plate which contained the spring (red circle) using hand.
- Finally, remove metal connections of battery switch by lifting holes (red circle) off containment piece.

Step 8



- The battery components of translucent flashlight completely disassembled.

To reassemble your device, follow these instructions in reverse order.

This document was last generated on 2019-07-22 02:07:41 AM.