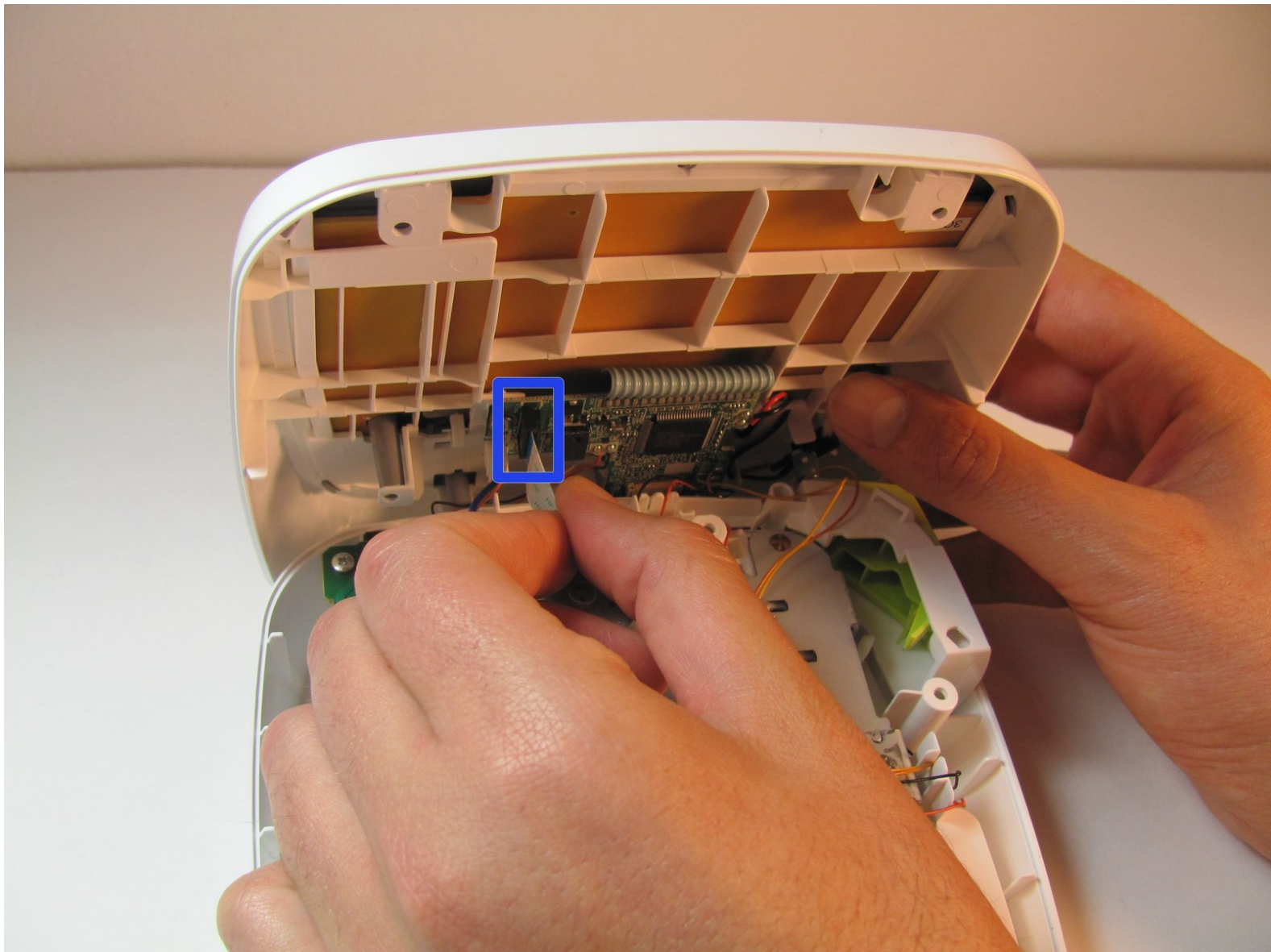


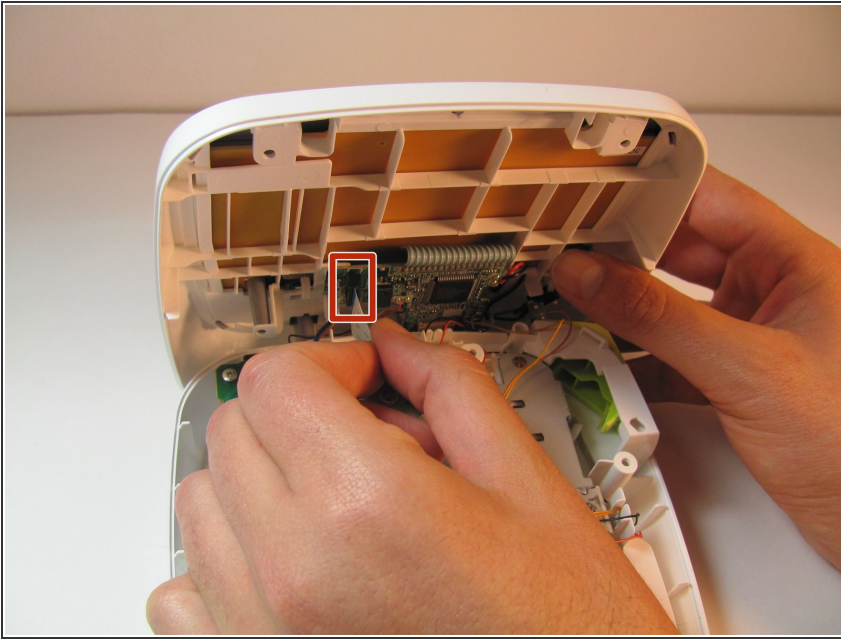


# Brother PT-D200 Circuit Board Cables Replacement

Written By: Jeston Mitchell



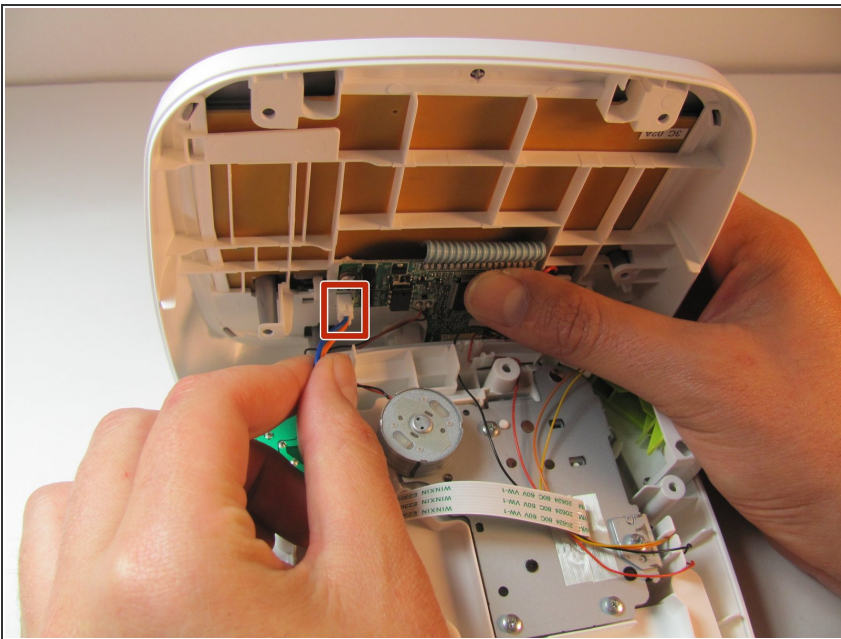
## Step 1 — Circuit Board Cables



- Gently pull out the ribbon cable from the circuit board.

⚠ The ribbon cable is very fragile.

## Step 2



- Remove two-pin plastic connector from the circuit board.

⚠ Gently pull the two-pin connector from the circuit board to avoid damaging the board.

To reassemble your device, follow these instructions in reverse order.