



# Removing the Cover From the Printer

Prerequisite only

Written By: Justin Taiki Fukada



 **TOOLS:**

- [T10 Torx Screwdriver](#) (1)
-

## Step 1 — Top Cover



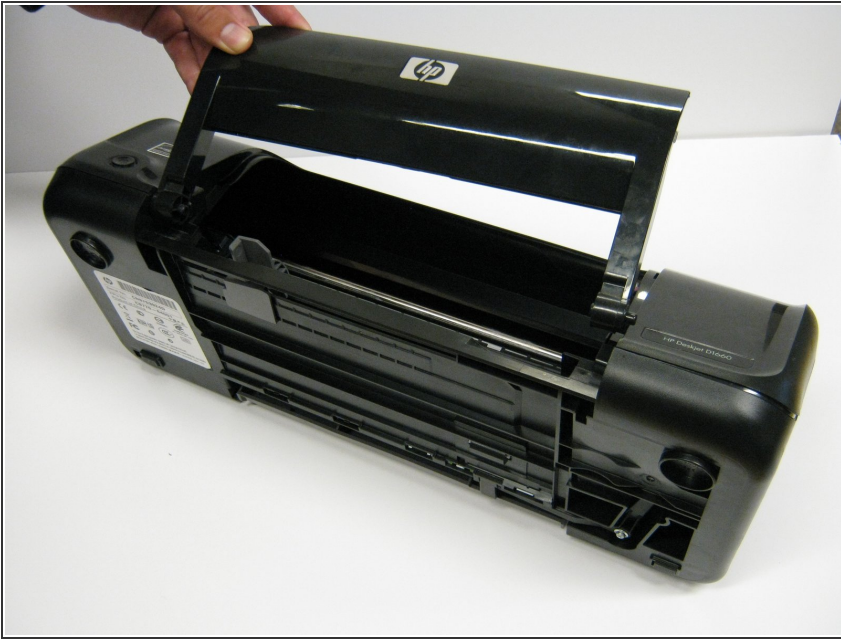
- Remove the back two 14.0 mm Torx #10 screws.

## Step 2



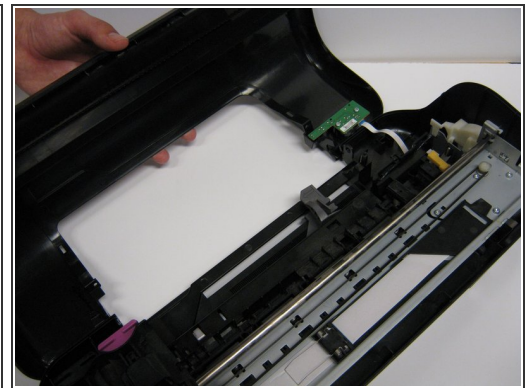
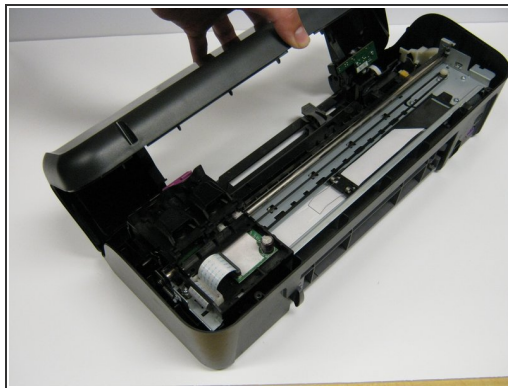
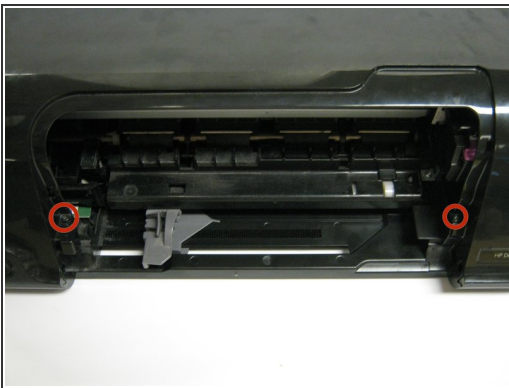
- Lay the printer on its back.
- Grab the paper tray by its right side and pull it to the left and up.

### Step 3



- Open the frontal access panel by lifting it from the top.
- Similar to the paper tray, grab it from the right side and pull it to the left and up.

### Step 4



- Take out the two frontal 14.0 mm Torx #10 screws.
  - Carefully lift the frontal cover.
- ⚠ Don't lift it up aggressively. A strip will be attached to it.

To reassemble your device, follow these instructions in reverse order.