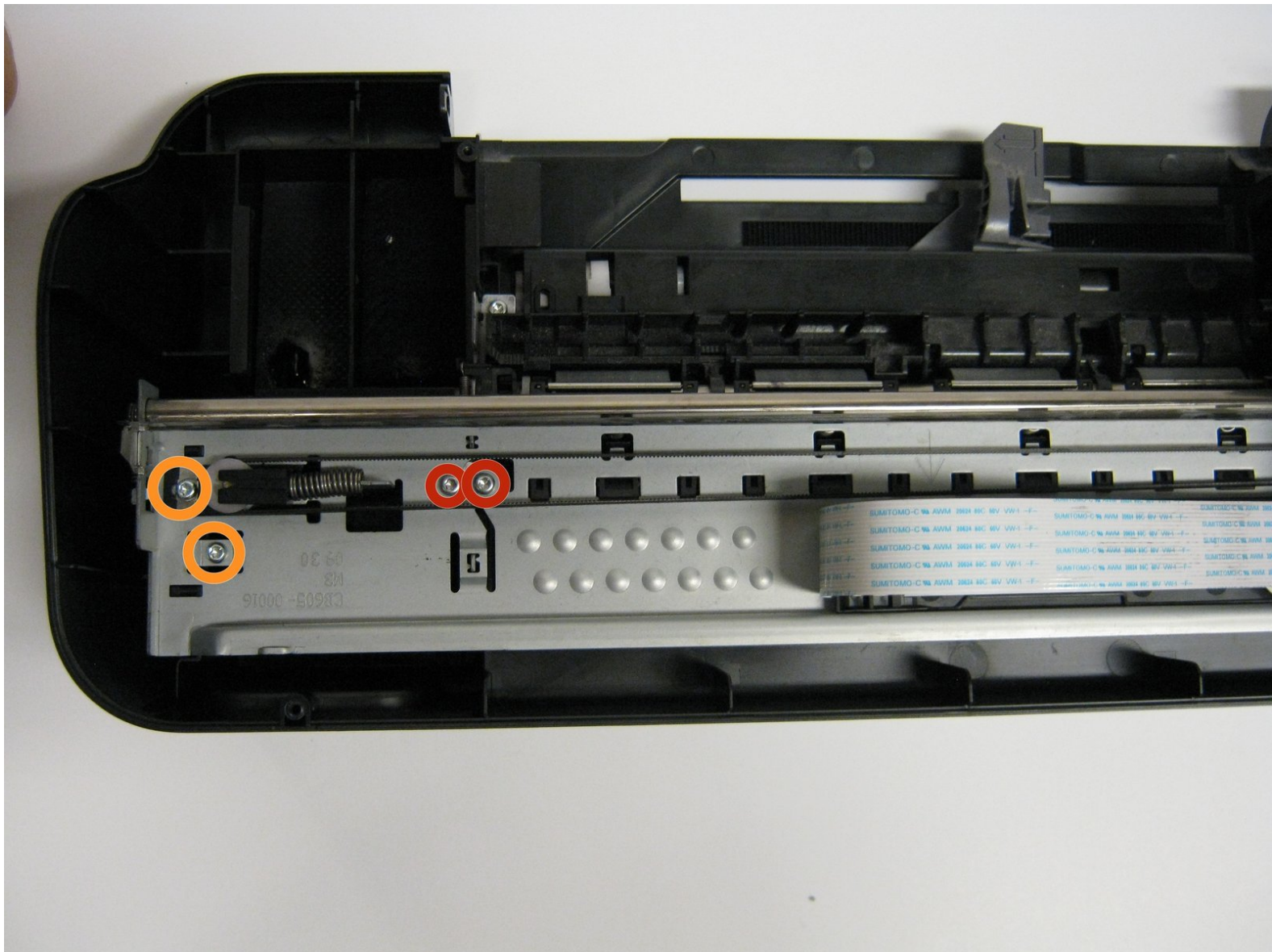




Removing the Ink Cartridge Rail

Prerequisite only

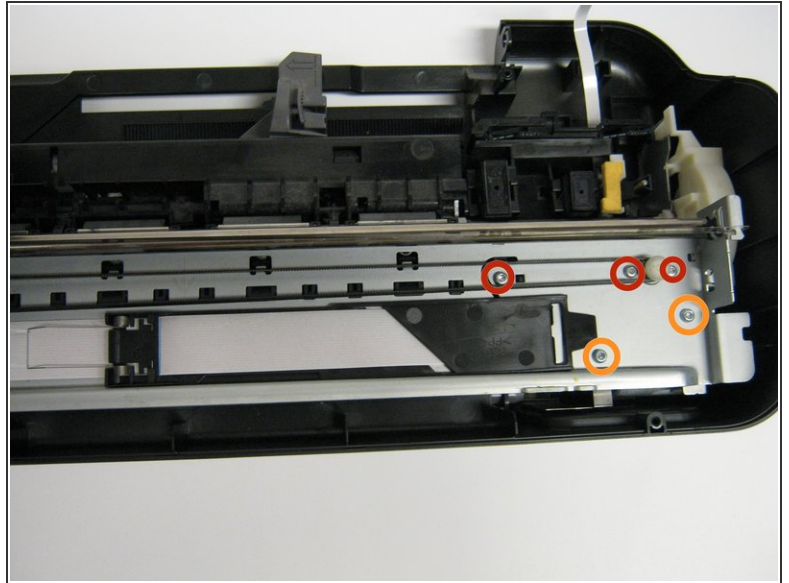
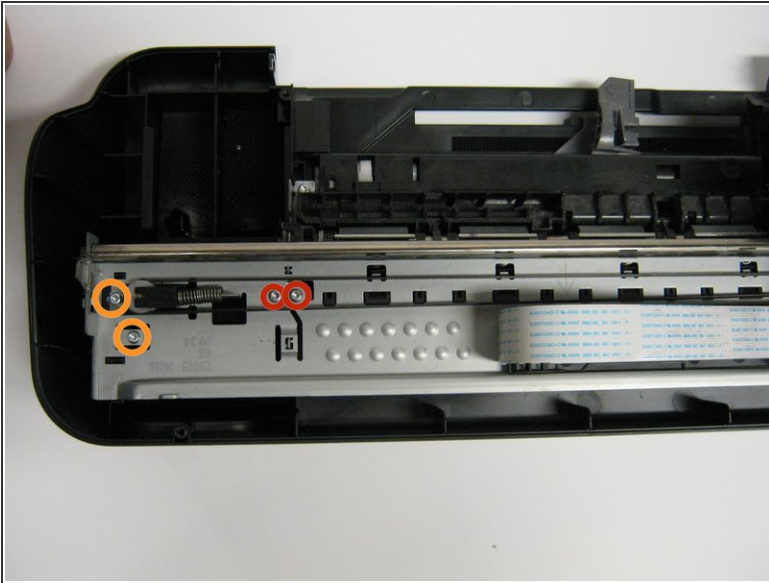
Written By: Justin Taiki Fukada



 **TOOLS:**

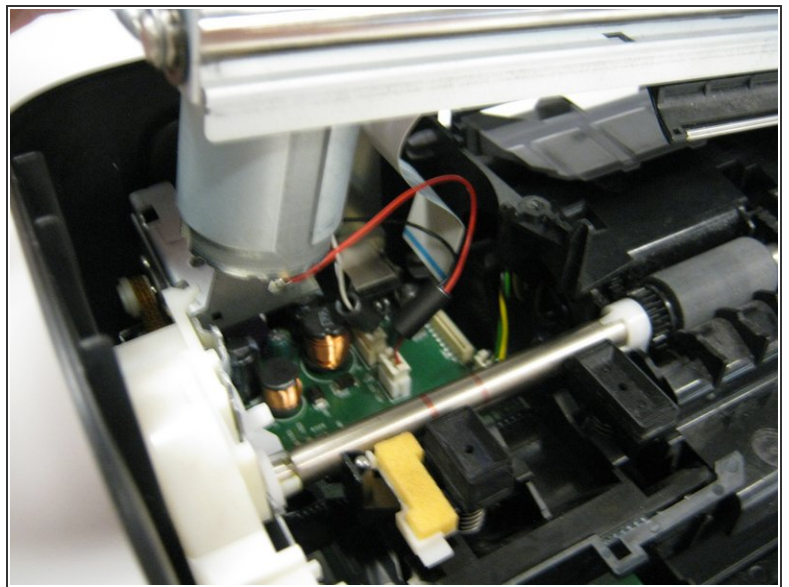
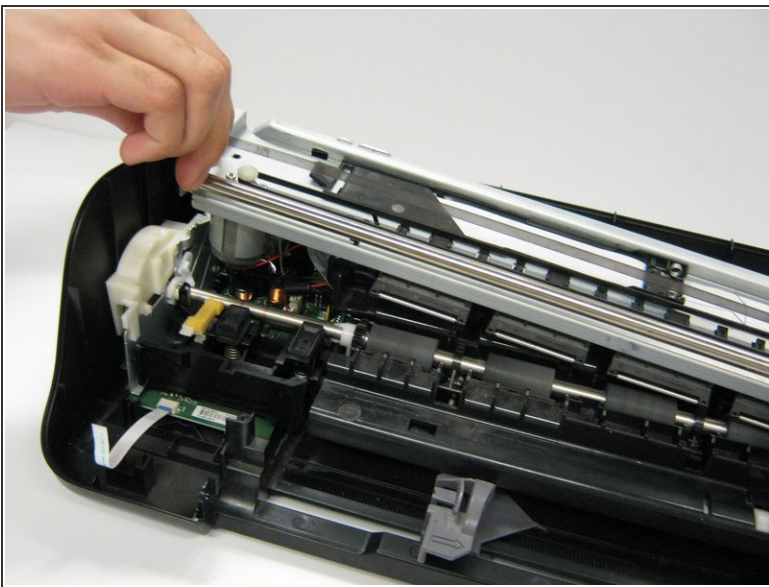
- [T10 Torx Screwdriver](#) (1)
-

Step 1 — Ink Cartridge Rail



- Remove the five 13.0 mm Torx #10 screws found on top of the frame.
- Remove the four 9.0 mm Torx #10 smaller screws.

Step 2



- ⚠ Lift the rail carefully as a strip and motor will be connected to the bottom part of the printer.
- Now detach the white strip and wires by gently lifting them up.

To reassemble your device, follow these instructions in reverse order.

This document was last generated on 2019-07-18 12:25:33 PM.