



Durofix RV332 Battery LED Replacement

This replacement guide will demonstrate how to properly replace the battery LED indicator on the Durofix RV332 Cordless Li-Ion Screwdriver.

Written By: Tyler Vincent



INTRODUCTION

Use this guide to replace a defective battery LED indicator. A new battery LED is need to complete this repair.

TOOLS:

- [iFixit Opening Tools](#) (1)
- [Phillips #0 Screwdriver](#) (1)
- [Soldering Iron](#) (1)
- [Flush Wire Cutters](#) (1)
- [Solder](#) (1)

PARTS:

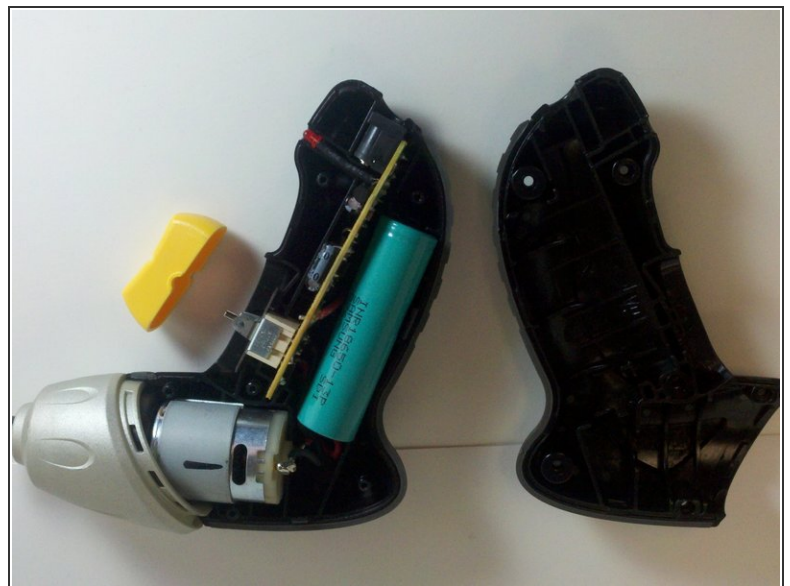
- [L.E.D.](#) (1)

Step 1 — Battery LED



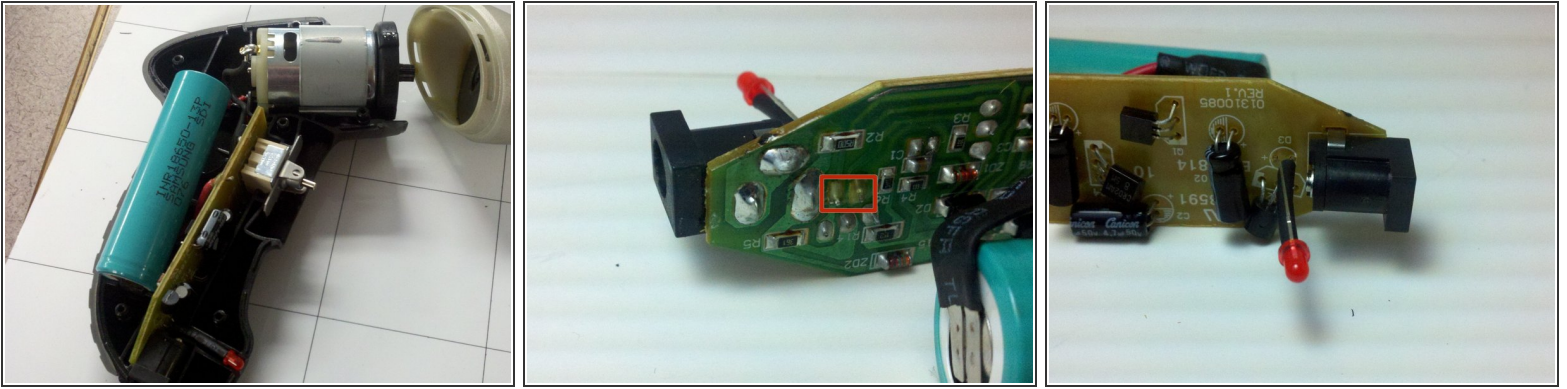
- Remove the six 13 mm case screws with a #0 Phillips screwdriver.

Step 2



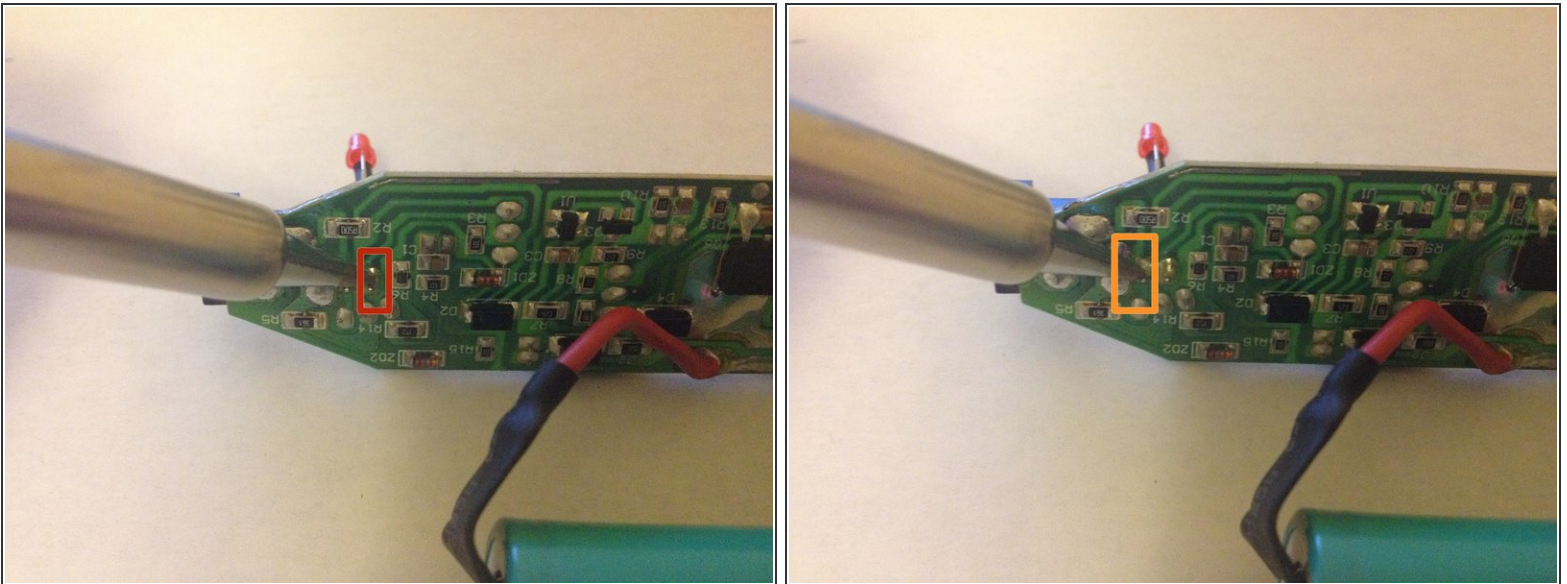
- Using a plastic opening tool, separate the casing halves to expose the contents of the cordless screwdriver.

Step 3



- Remove printed circuit board, LED, battery, and motor assembly from the screwdriver casing.
- Use a soldering iron to melt the solder from the LED's two pins on the printed circuit board.
- Remove the LED from the circuit board while the solder is still melted.

Step 4



- Place the positive leg of the new LED through the positive hole in the printed circuit board and solder it into place.
- Place the negative leg of the LED through the negative hold in the printed circuit board and solder it into place.

To reassemble your device, follow these instructions in reverse order.