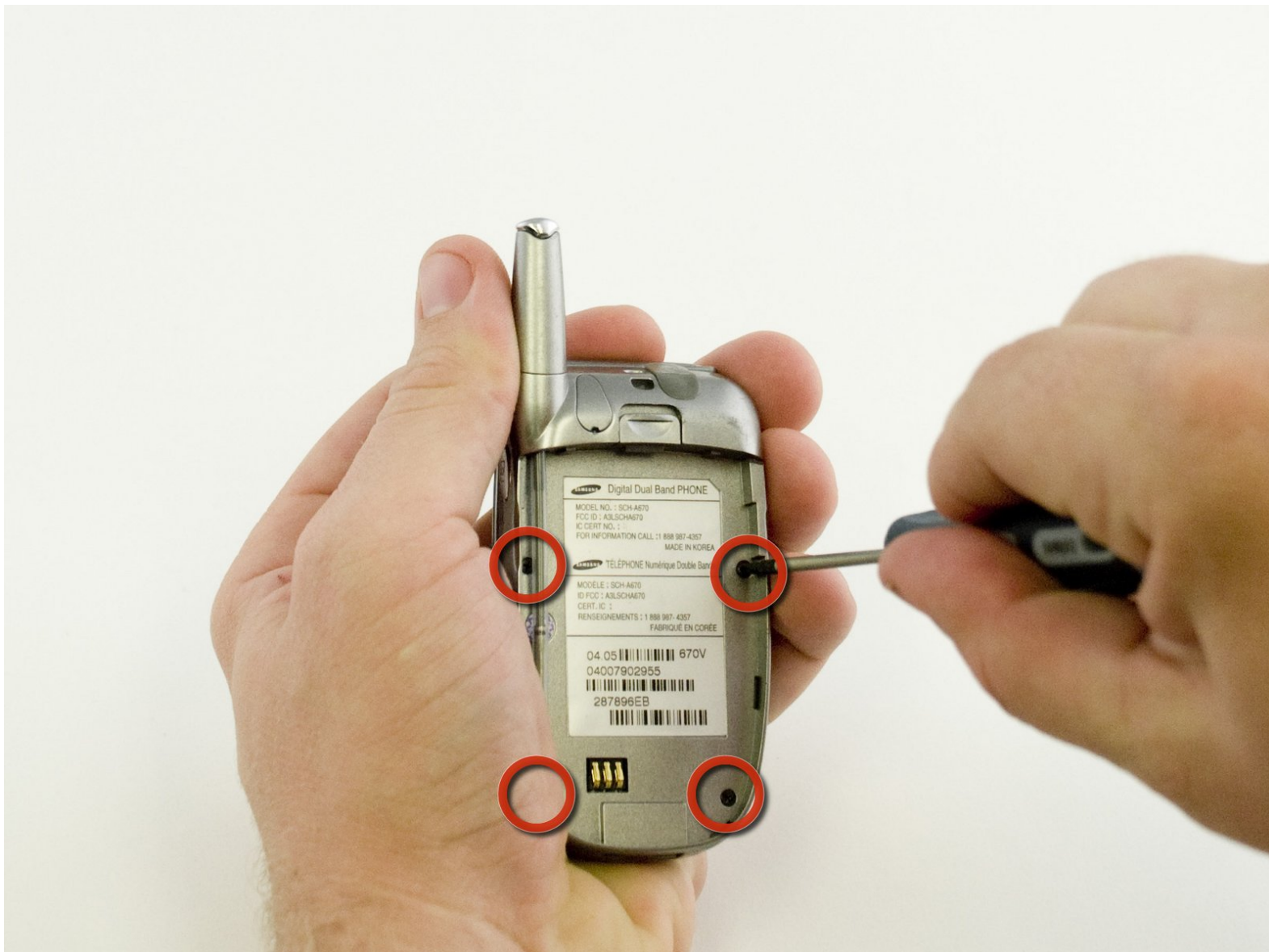




Samsung SCH-A670 Logic Board Replacement

Written By: Nathan Brink



INTRODUCTION

It may become necessary to replace the logic board on this cell phone in order to correct a problem. Following this guide will make removal quite easy.

TOOLS:

- [Phillips #00 Screwdriver](#) (1)
 - [Spudger](#) (1)
 - [Push Pin](#) (1)
-

Step 1 — Battery Cover



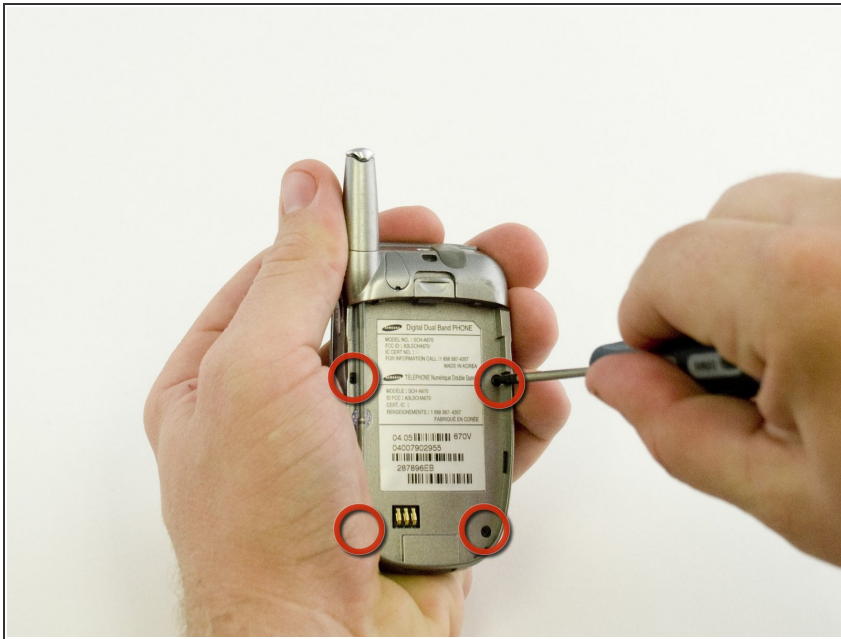
- Slide the latch on the back of the phone up.

Step 2 — Battery



- Remove the battery.

Step 3 — Logic Board



- After removing the battery, remove the four small Phillips-head screws with a #0 Phillips screwdriver.

Step 4



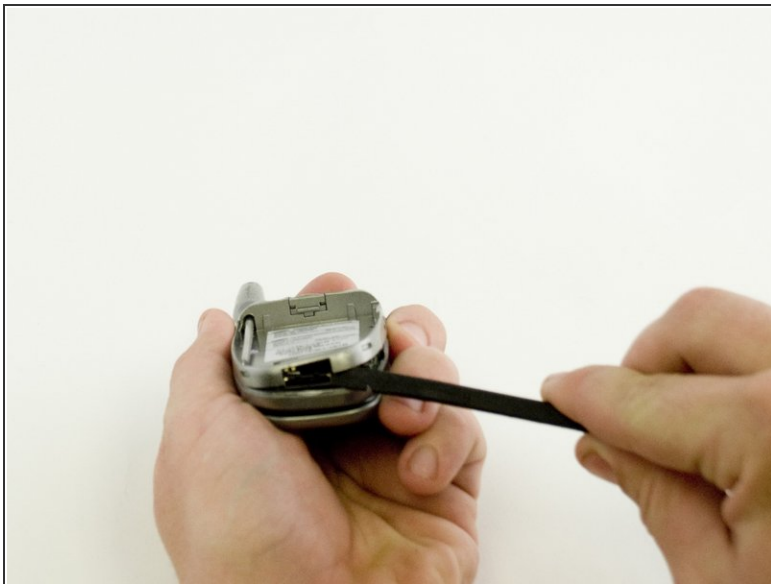
- Using a thumbtack, pry the small plastic cover from the case near the base of the antenna.

Step 5



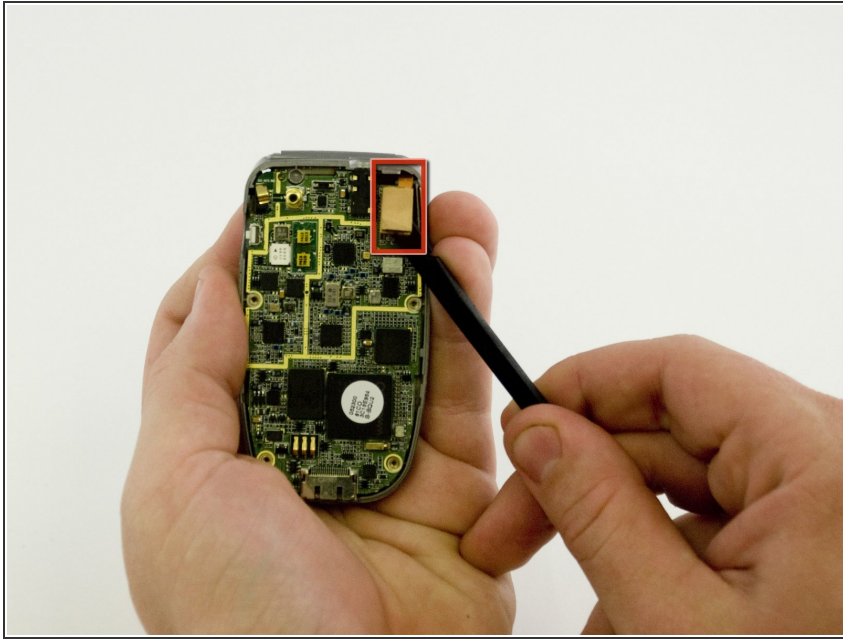
- With a #0 Phillips screwdriver remove the screw which you just uncovered.

Step 6



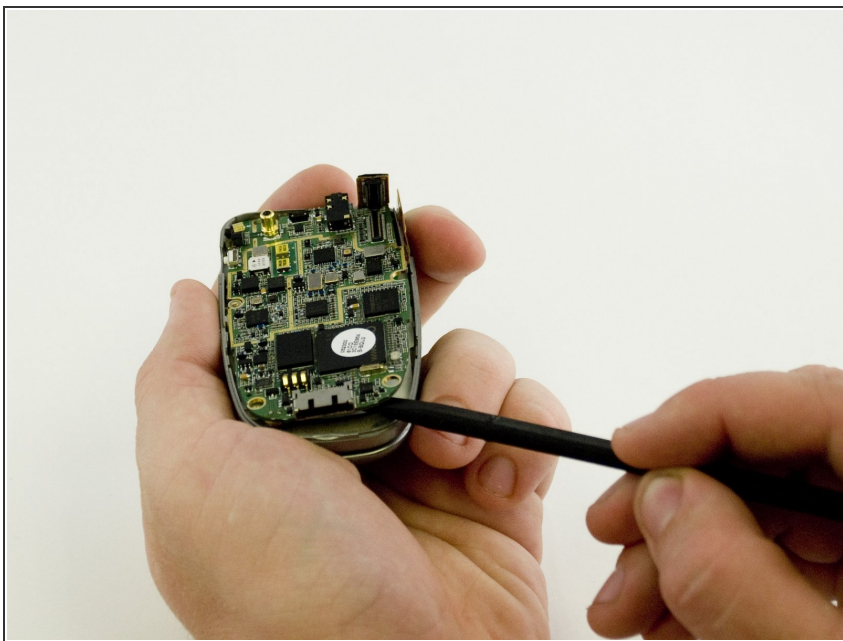
- Using the spudger, carefully pry the case apart starting near the charging port. Ease the case open.
- Then disconnect the small power connector near the top of the phone.

Step 7



- Gently pry up the ribbon-type connector with the spudger.

Step 8



- Carefully pry the logic board from the case with the spudger.