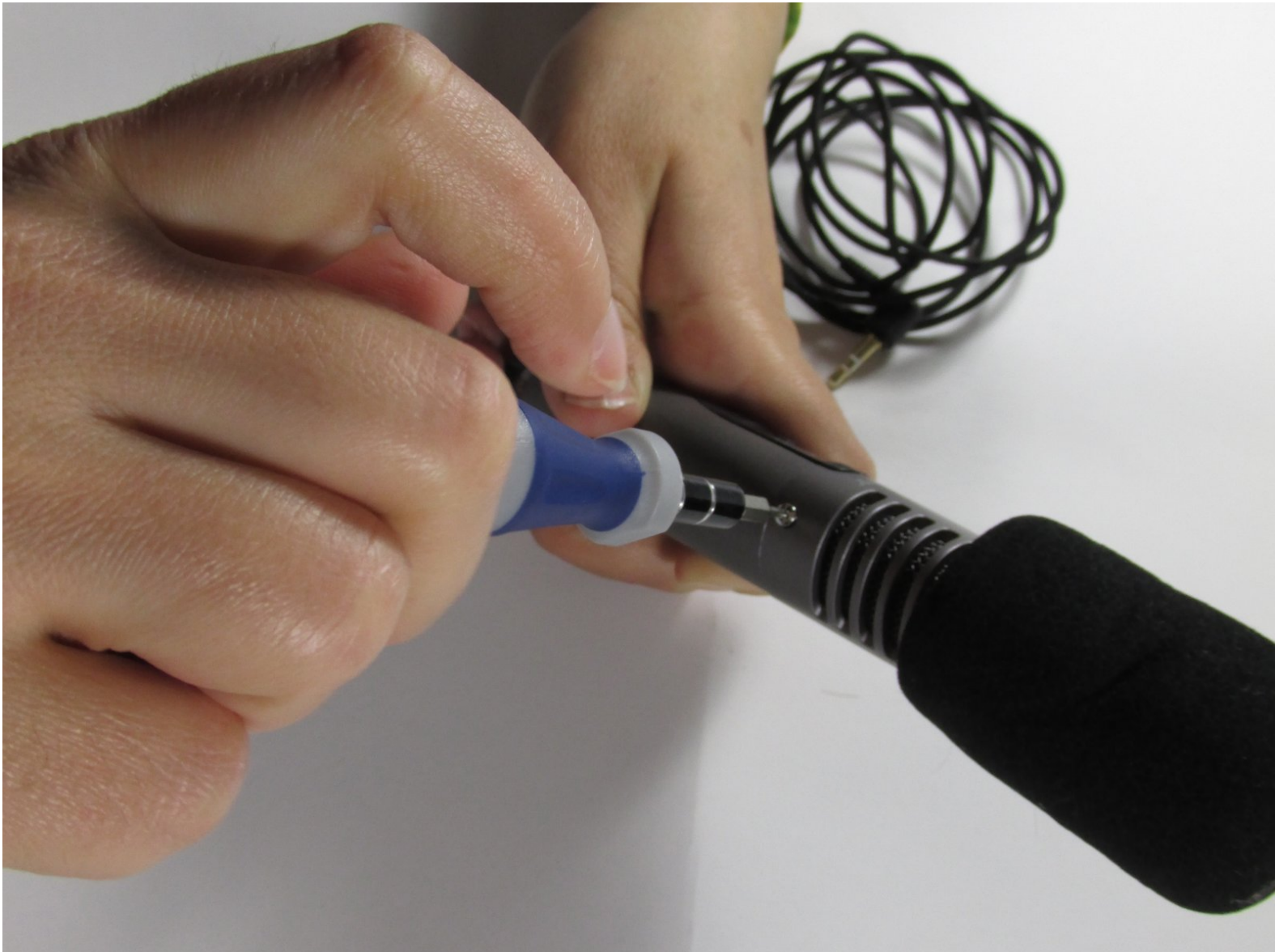




# How to check the Sony ECM-MS907 cover shield

User examination of the cover shield.

Written By: Kefaya



---

## INTRODUCTION

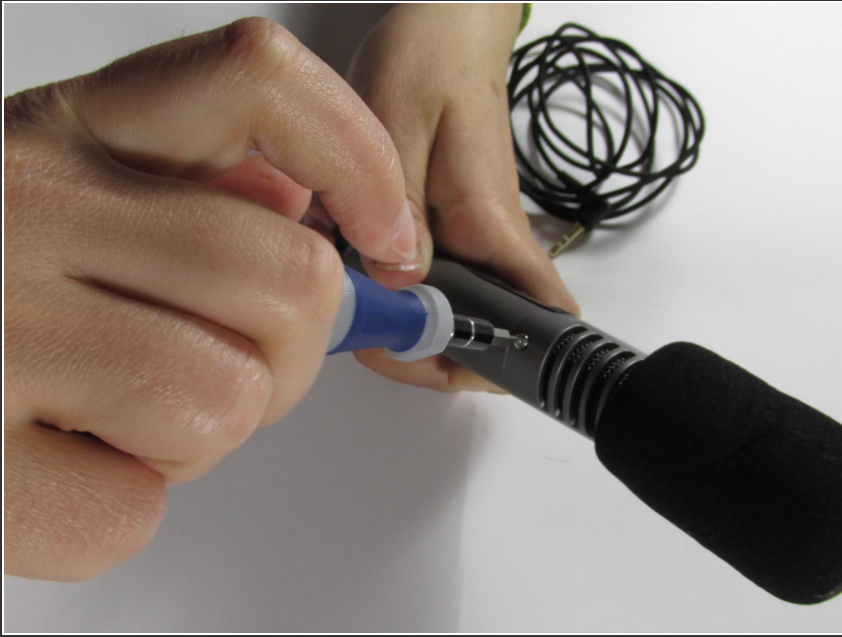
A cracked or dirty cover shield can be the cause of many recording problems for the Sony ECM-MS907 microphone. This guide will go over a short examination of the cover shield.

---

### TOOLS:

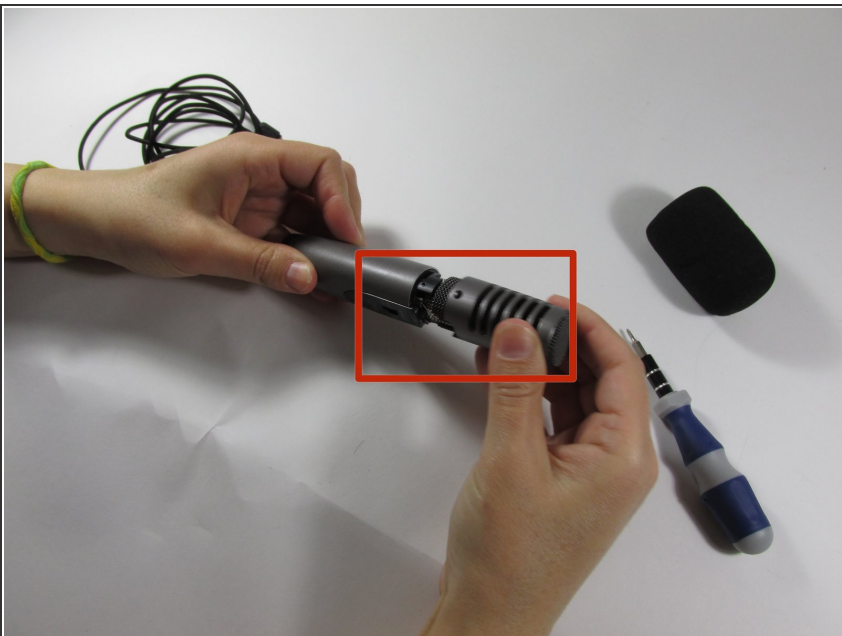
- [Phillips #00 Screwdriver](#) (1)
-

## Step 1 — How to check the Sony ECM-MS907 cover shield



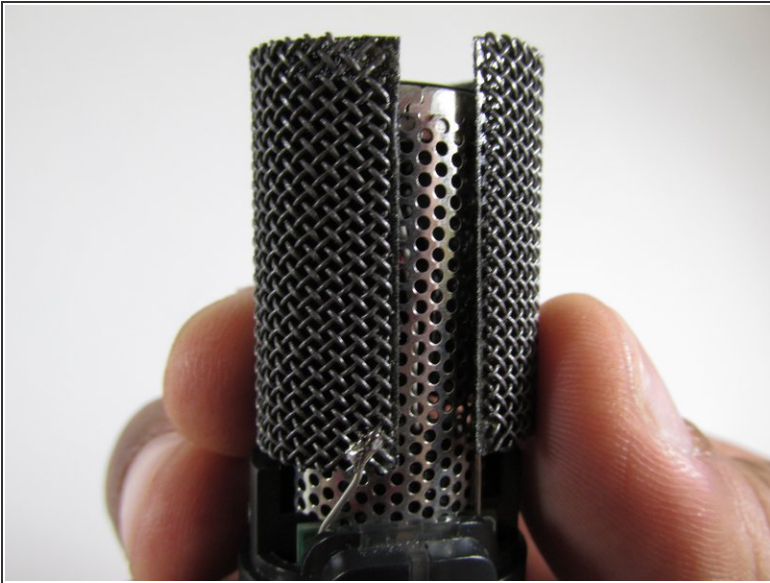
- Using the Phillips head (#00) screwdriver, remove the two screws at the bottom base of the diaphragm.

## Step 2



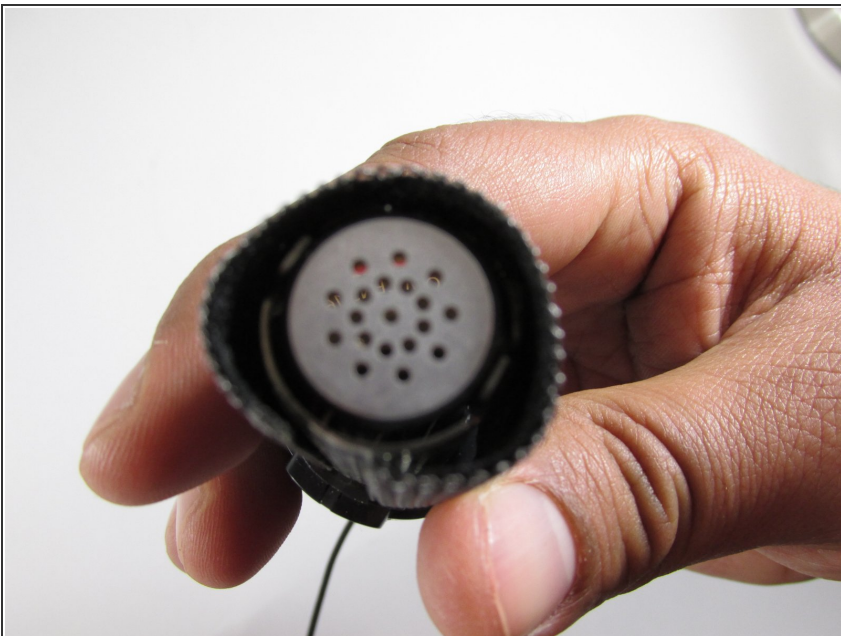
- Separate the top outer cover from the bottom base of the microphone to reveal the cover shield.

### Step 3



- Underneath the top outer cover is the partially welded cover shield, which protects the inner receiver of the microphone from dust.
- Examine the cover shield thoroughly for any dirt or cracks.

### Step 4



- Take a quick look at the top of the inner receiver for any excess dirt.

To reassemble your device, follow these instructions in reverse order.

This document was last generated on 2019-08-29 01:21:39 AM.