



Durofix RV332 Control Button Replacement

This guide will demonstrate how to properly replace a defective control button on a Durofix RV332 Cordless Li-ion Screwdriver.

Written By: Tyler Vincent





TOOLS:

- [Phillips #0 Screwdriver](#) (1)
- [Spudger](#) (1)
- [iFixit Opening Tools](#) (1)



PARTS:

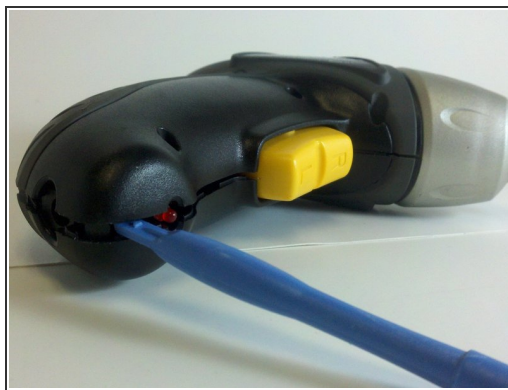
- [Durofix RV332 replacement button](#) (1)

Step 1 — Control Button



- Remove the six 13 mm casing screws with a #0 Phillips screwdriver.

Step 2



- Separate screwdriver casing halves with a plastic opening tool.

Step 3



- Remove the yellow plastic control button from the screwdriver casing.
- With the defective button removed, replace with a new control button.

To reassemble your device, follow these instructions in reverse order.

This document was last generated on 2019-07-09 01:54:22 AM.