



Samsung 500C ChromeBook Wireless Card Replacement

A guide to replace the wireless card of the device.

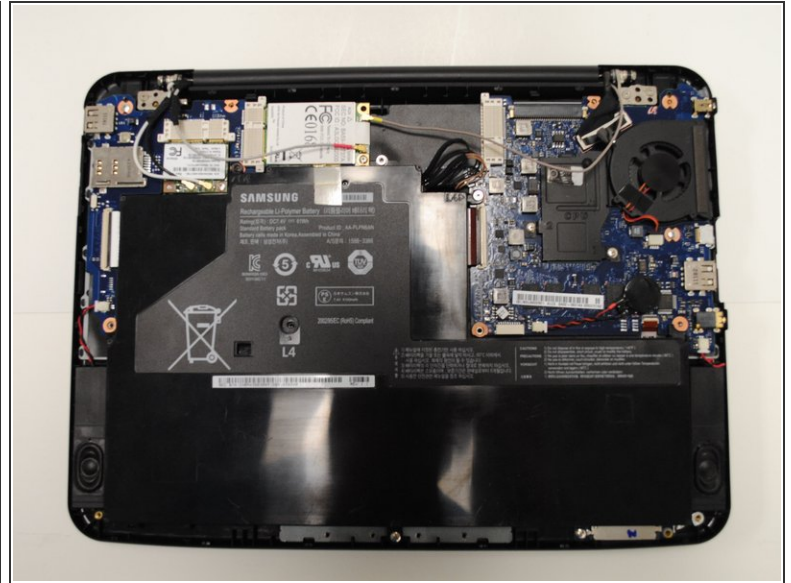
Written By: Garrett Kissinger



 **TOOLS:**

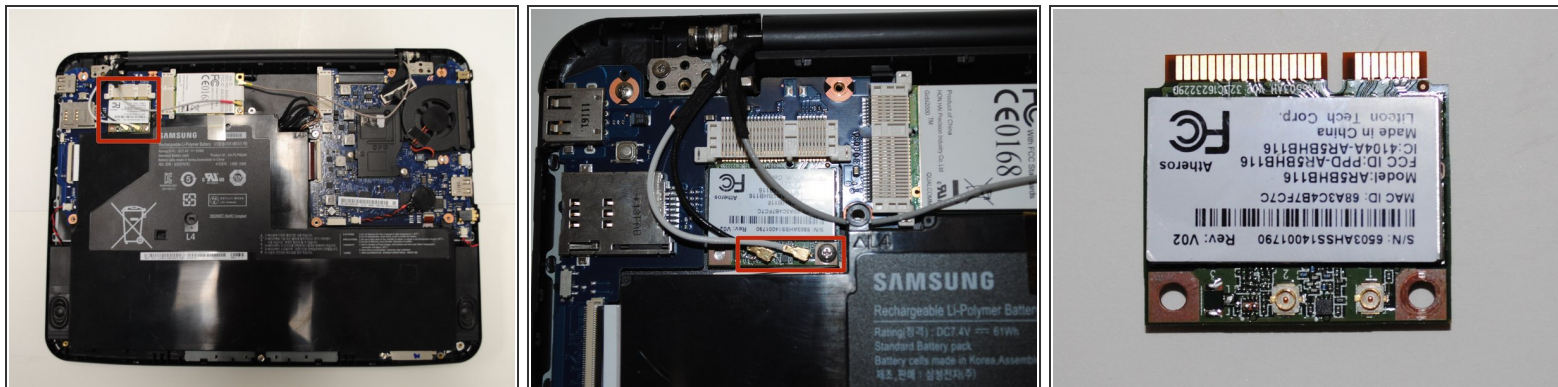
- Phillips #0 Screwdriver (1)
 - Spudger (1)
-

Step 1 — Wireless Card



- Remove the back panel of the device by taking out the seven screws on the back panel of the device.
- Four of the screws are under the rubber feet so they will need to be removed. To remove the feet, pry them off with the spudger.

Step 2



- Locate the wireless card. It is shown highlighted in picture one.
- Detach the black and white cords connected to the wireless card and unscrew the screw holding in the card. They are shown highlighted in picture two.
- Pull the card out of its slot and insert the new card. Reattach the wires and reassemble the device. Note: the white wire connects to the terminal closer to the screw and the black to the other terminal.

To reassemble your device, follow these instructions in reverse order.

This document was last generated on 2019-07-19 01:42:33 AM.