



N-Strike Nite Finder EX-3 Trigger Replacement

This is a guide to replacing the trigger of your N-Strike Nite Finder EX-3. This will solve problems such as a laser not turning on, a stuck trigger, or the blaster not firing.

Written By: Kyle Schober



INTRODUCTION

If pulling the trigger of your Nerf Nite Finder doesn't cause it to fire, the trigger might need to be replaced. This guide shows how to do so.

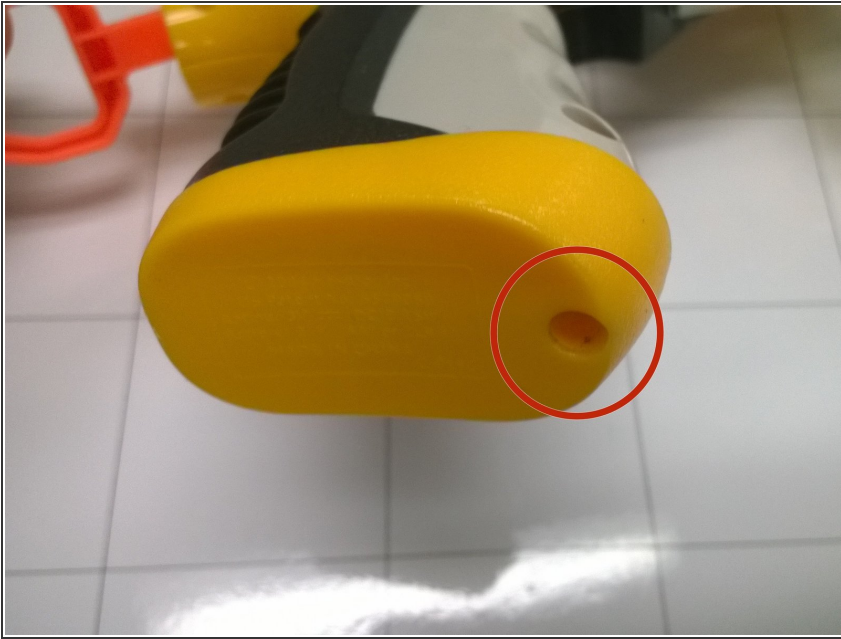
==CAUTION==

Be aware of springs under compression. Take care so these small parts do not fly off the blaster and get lost.

TOOLS:

- [Phillips #1 Screwdriver](#) (1)
-

Step 1 — Trigger



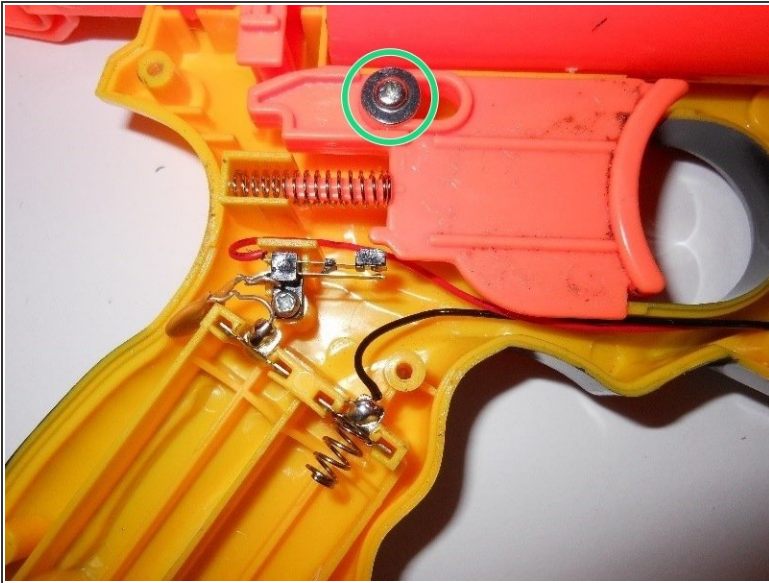
- Place the blaster upside down on the table, and remove the screw in the bottom of the handle.
- Remove the battery door and take the batteries out.

Step 2



- Set the blaster on its side with the screws facing up (the blaster will be placed on its left side). Remove all 14 phillips head, 8.2 mm screws and set them aside.
- Lift the side of the blaster off exposing its internal parts.

Step 3



- Remove the Phillips head, 10.2 mm screw holding the trigger in place.

Step 4



- Remove the trigger by pulling the piece straight up.
- ⚠ Caution: Do not let the spring fly off the spring

To reassemble your device, follow these instructions in reverse order.

