



# N-Strike Nite Finder EX-3 Battery Replacement

This guide details how to replace the batteries in the blaster.

Written By: Nicholas Samokyszyn



## INTRODUCTION

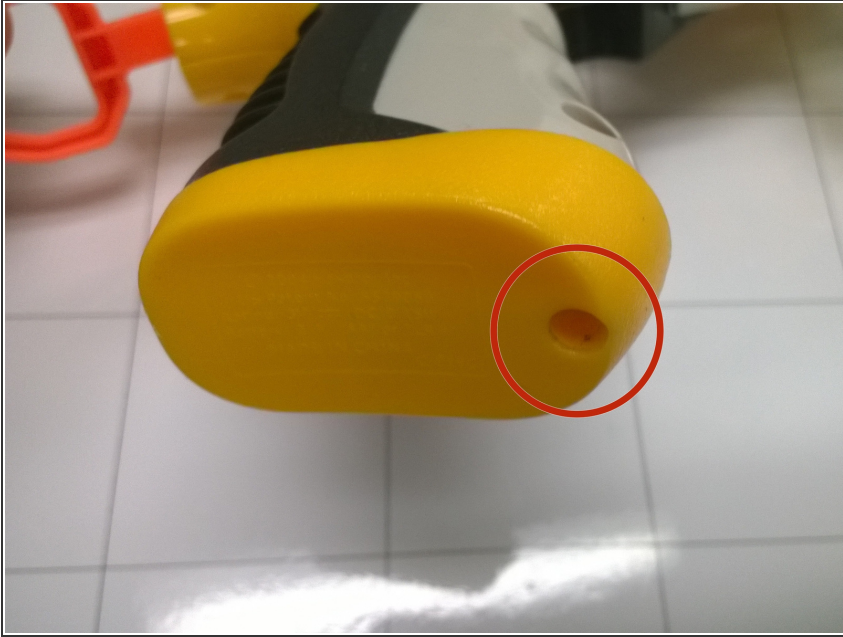
Batteries power the laser. If the laser is not working, one of the reasons might be the batteries. Follow the steps in this guide to correctly replace the batteries.

---

### TOOLS:

- [Phillips #1 Screwdriver](#) (1)
-

## Step 1 — Battery



- The batteries are located in the handle of the blaster.
- The base plate is held in place with a single phillips head, 8.2 mm screw. Remove this screw and remove the base plate to access the battery compartment.

## Step 2



- Once the batteries have been removed, you can check to see if they have any charge left in them with a battery tester.
- If they are in fact dead, replace them with standard AA type batteries in the correct orientation.

To reassemble your device, follow these instructions in reverse order.