



Olympus Stylus 410 Shutter Button Replacement

Written By: Rory Aronson



INTRODUCTION

If the shutter button on your camera has stopped functioning, use this guide to remove the old one and install a new button.

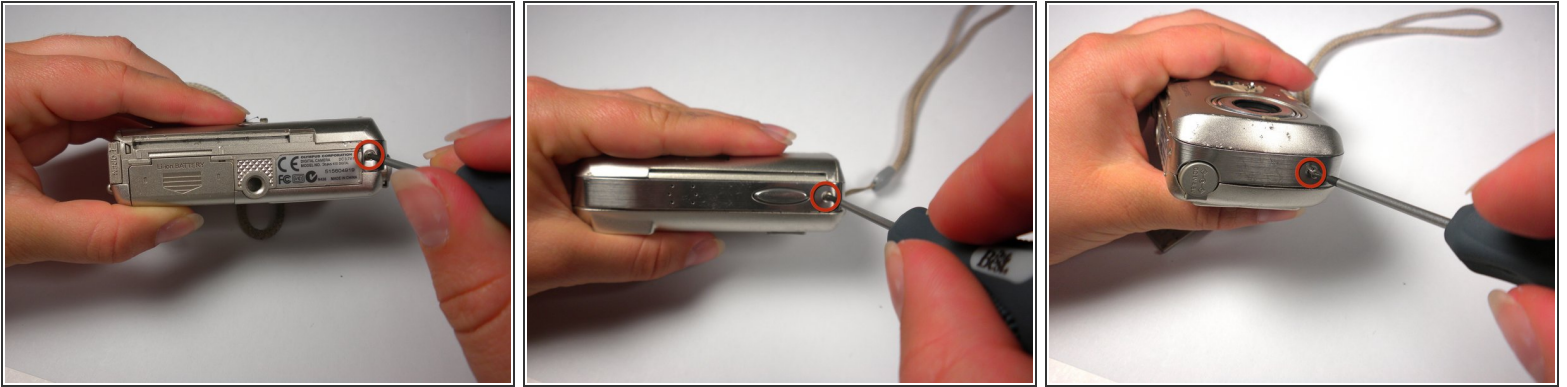
TOOLS:

- [Phillips #00 Screwdriver](#) (1)
- [Spudger](#) (1)

PARTS:

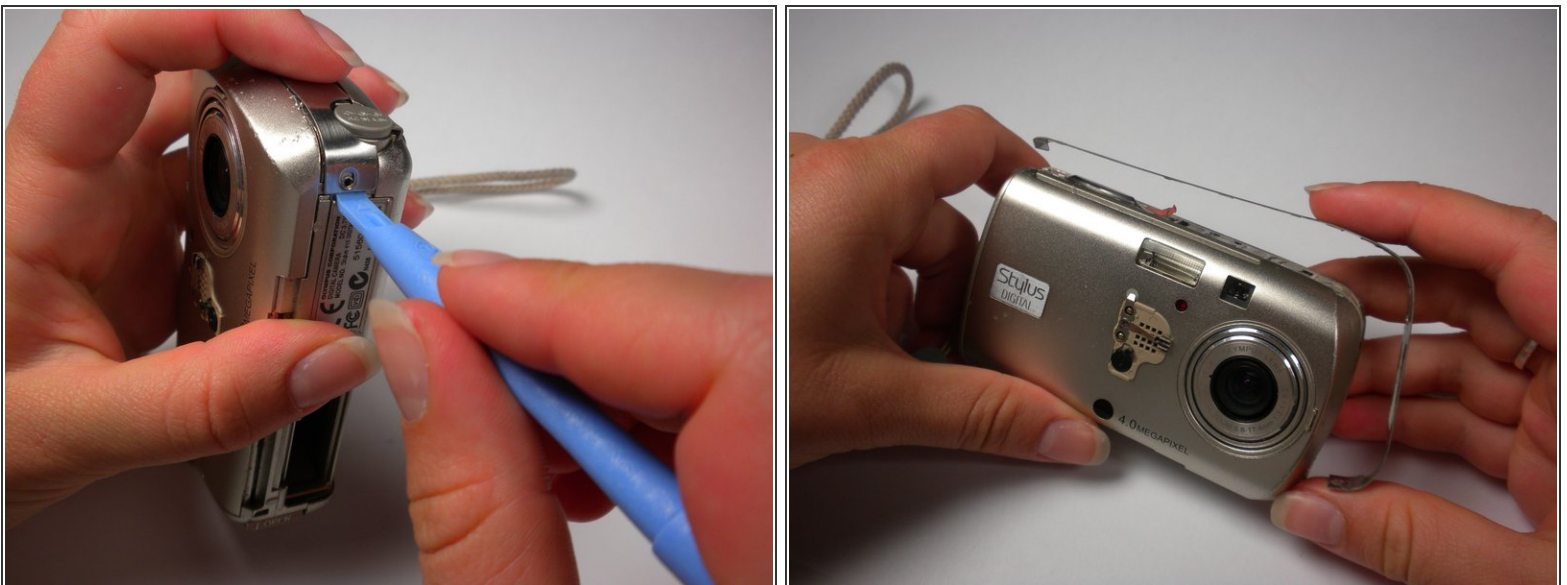
- [Replacement Shutter Button](#) (1)

Step 1 — Shutter Button



- Locate the 3 screws on the outer metal band and remove them with a #00 Phillips screwdriver.

Step 2



- Use the spudger to peel off the outer metal band, starting from the bottom of the camera.

⚠ The metal band is attached to the camera with glue in addition to screws. Be careful not to bend the band when removing it from the camera.

Step 3



- The shutter button can now be removed. It is not connected to the camera and can be lifted off.

To reassemble your device, follow these instructions in reverse order.

This document was last generated on 2019-07-08 07:45:52 PM.