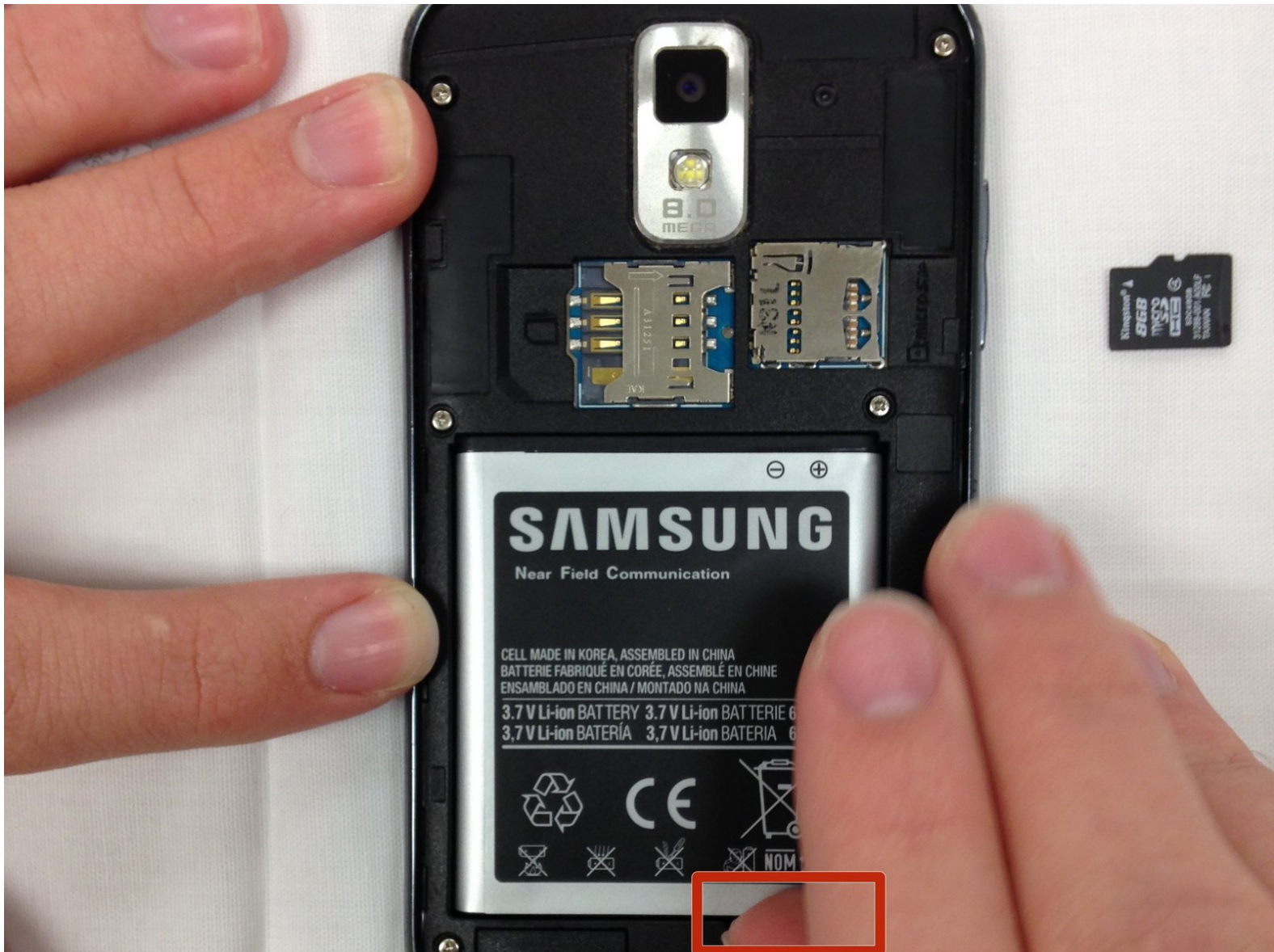




Samsung Galaxy S II T989 Battery Replacement

This guide will provide the steps necessary to replace the battery.

Written By: Joshua King



INTRODUCTION

A faulty or damaged battery can cause a variety of problems ranging from the phone not turning on to a possible destruction of the phone. When replacing the battery it is important to make sure the phone is turned off to prevent any possible loss of data.

If your battery is swollen, [take appropriate precautions](#).



PARTS:

- [Samsung S II T989 Replacement Battery](#) (1)
-

Step 1 — Rear Cover



- To remove the rear cover, locate the tab indicated by the red outline.
- Using your fingernail, gently pry the rear cover.

Step 2 — Battery



- ⚠ Turn off the phone before removing battery.
- The battery can be removed from the phone by applying an upwards pressure to the bottom right edge of the battery, as indicated by the red rectangle.
- After the battery starts to lift upwards, use your hand to hold and remove it.

To reassemble your device, follow these instructions in reverse order.