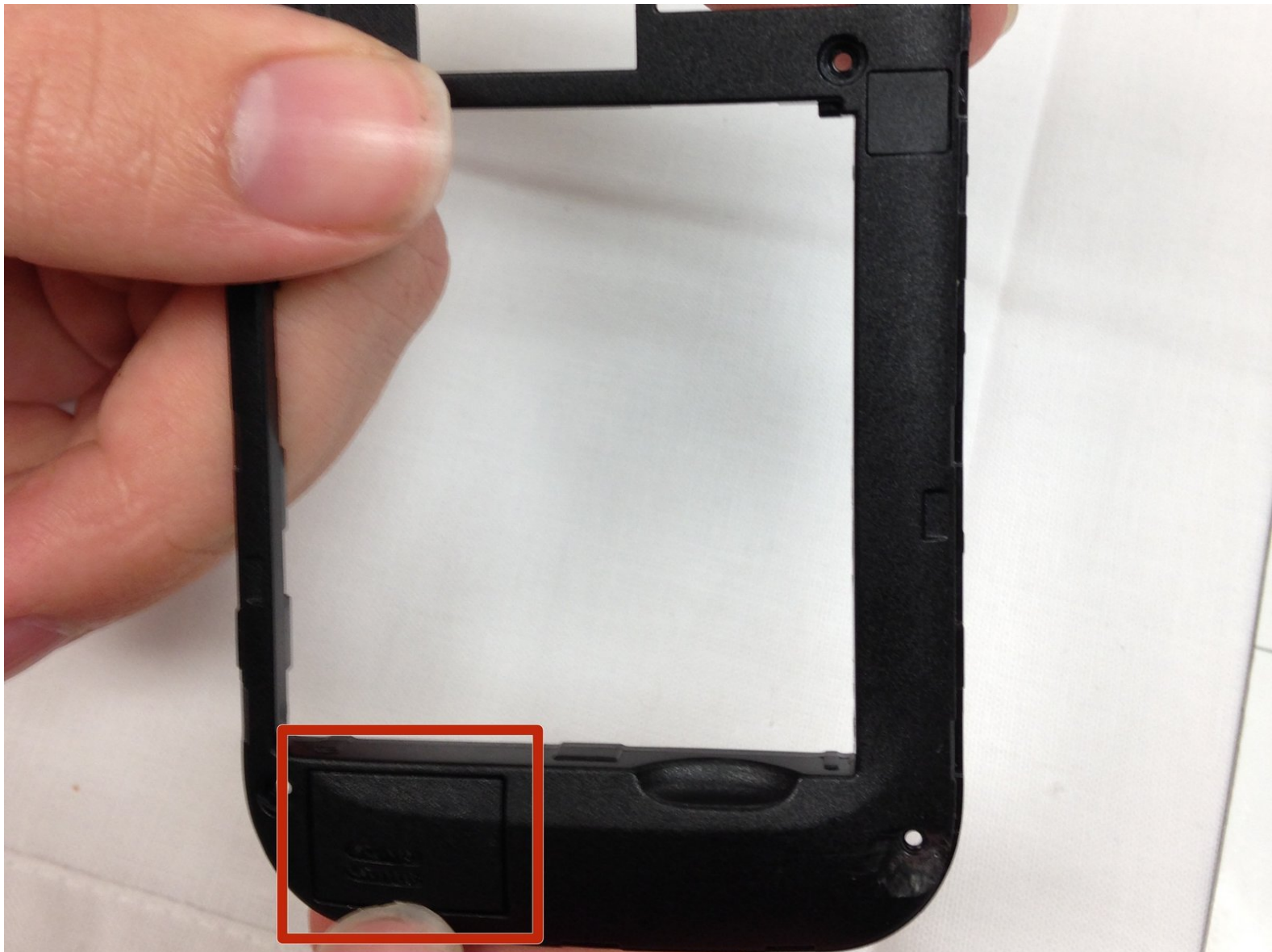




Samsung Galaxy S II T989 Speaker Replacement

This guide provides instructional steps on how to access the speaker and remove it for replacement.

Written By: Joshua King



INTRODUCTION

The speaker located on the back of the phone is a larger speaker that is housed in the protective inner plate. This speaker is used when no headphones are plugged in for media and the speakerphone function.

TOOLS:

- [Phillips #0 Screwdriver](#) (1)
 - [Anti-Static Wrist Strap](#) (1)
 - [iFixit Opening Picks set of 6](#) (1)
-

Step 1 — Rear Cover



- To remove the rear cover, locate the tab indicated by the red outline.
- Using your fingernail, gently pry the rear cover.

Step 2 — Inner Plate



- The inner plate is held on by six screws that are 1/16 of an inch (1.6 mm).
- Remove the screws with a Philips head precision screwdriver.
- Place all screws someplace that they will not easily be lost, such as a magnetic mat or a plastic bag.

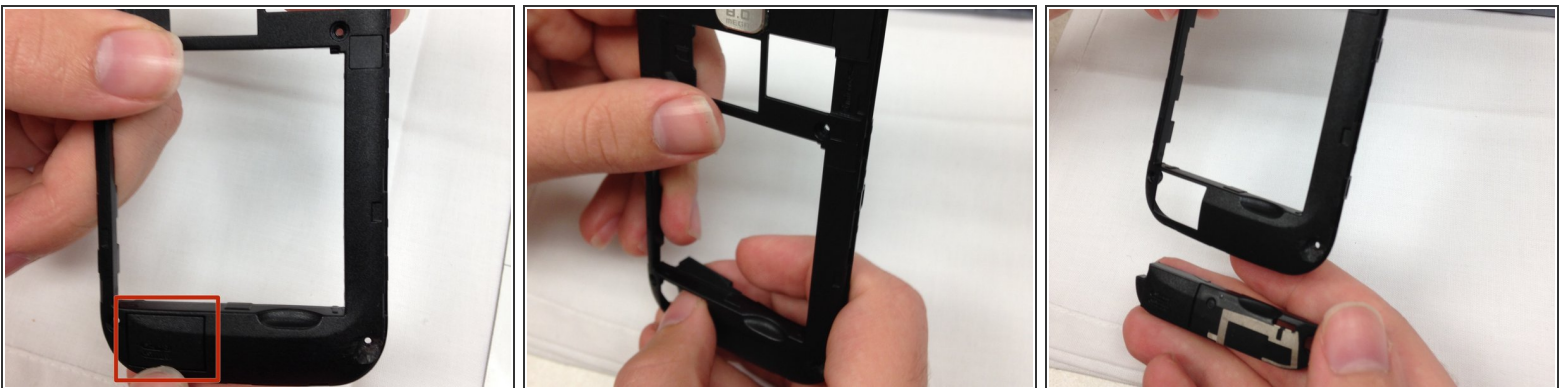
Step 3



⚠ When removing the inner plate, place device on grounded surface or use anti static wrist band.

- After the screws have been removed, the only thing holding the inner plate in is several plastic tabs built into the frame of the phone.
- Firmly pinch the edge, as shown in the picture, and pull the plate away from the frame.
- If you cannot get a grip on the inner plate, consider using the spudger to pry and lift the plate out.

Step 4 — Speaker



- The speaker is located in the area located by the red rectangle.
- To remove the speaker hold the frame with one hand then push the speaker out with the other.

⚠ It may take a large amount of force so be careful to hold the frame to prevent it from breaking.

To reassemble your device, follow these instructions in reverse order.

This document was generated on 2020-11-28 03:15:06 AM (MST).

