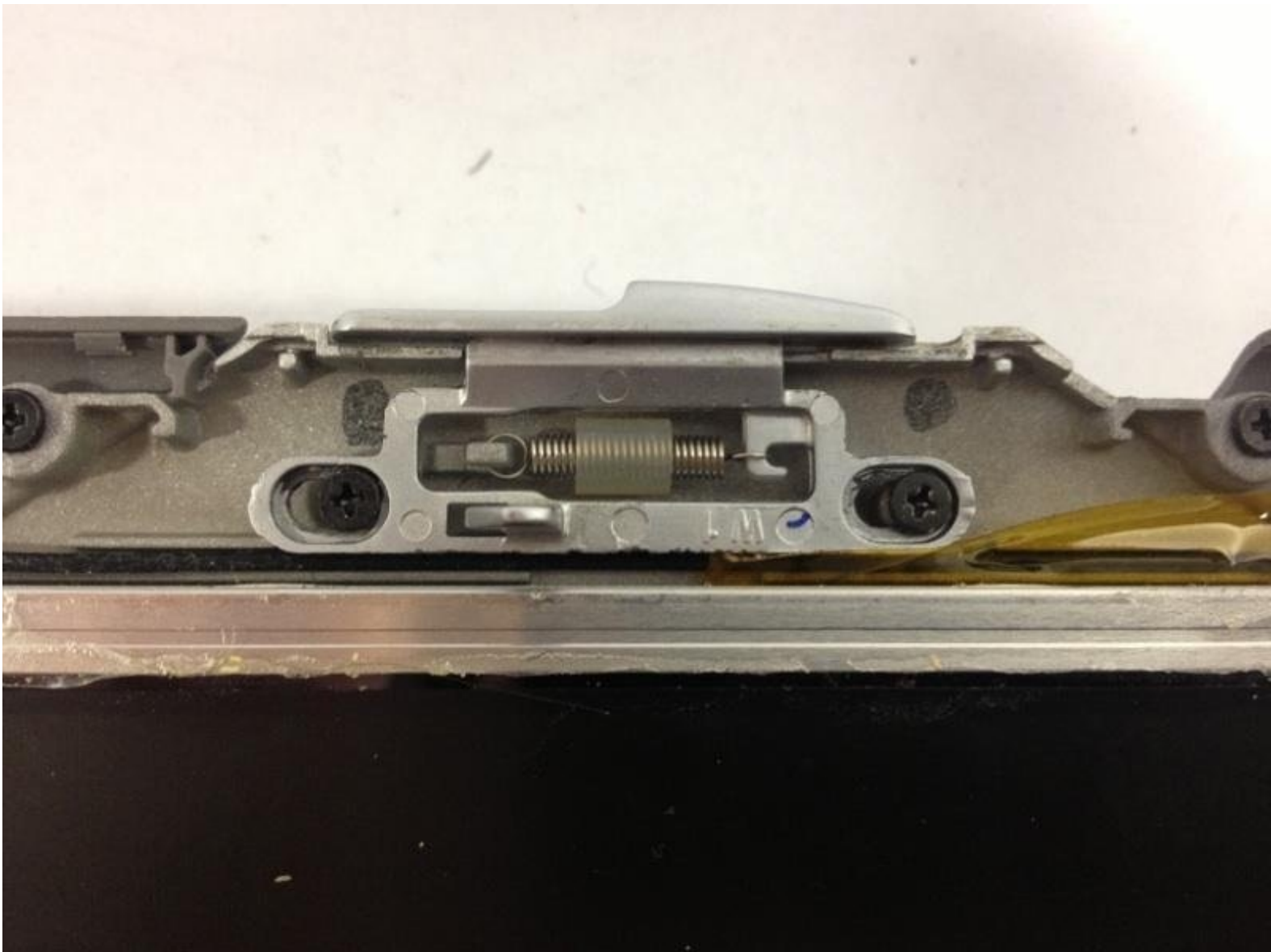




Dell Latitude X300 Latch Replacement

This is a guide on how to replace the latch for a Dell Latitude X300

Written By: Jacob



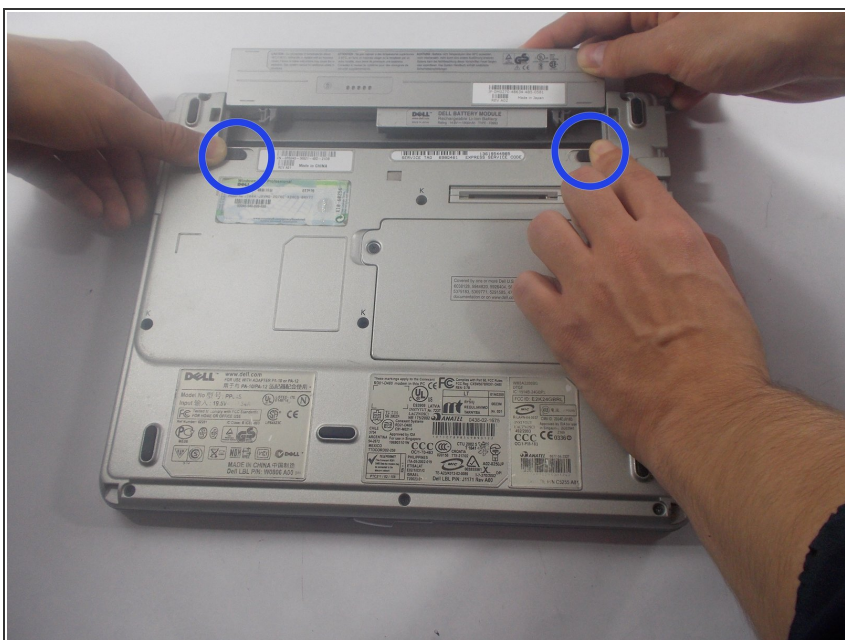
INTRODUCTION


Replacing a Latch on the Dell Latitude X300

TOOLS:

- [Phillips #0 Screwdriver](#) (1)
-

Step 1 — Latch



 Make sure the power is off.

- Remove the battery located on the bottom of the device by pushing in both clips.

Step 2



 Remove rubber caps on each corner of the front screen with a pinch.

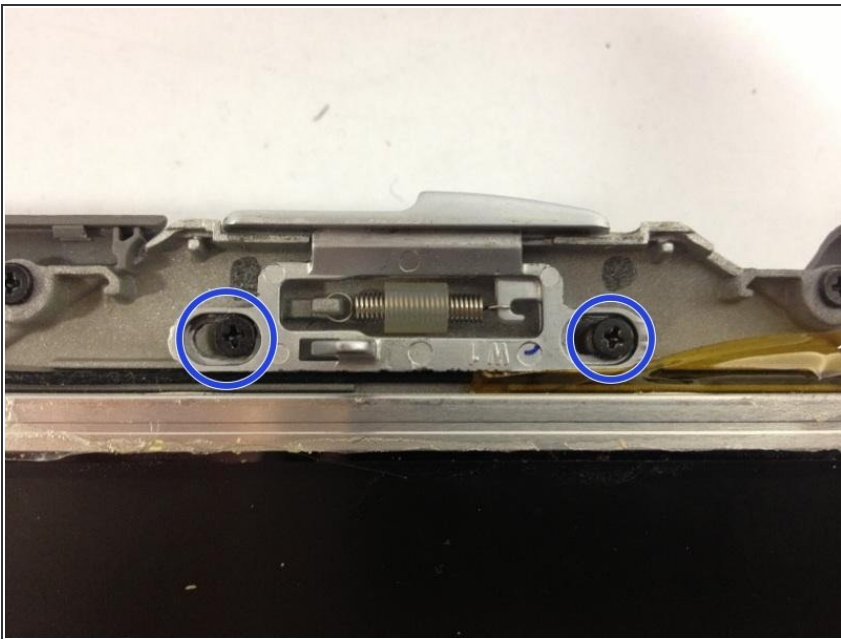
- Remove the 4 mm screws located on the front screen of the laptop.

Step 3



- Carefully, remove the screen casing using either your hands or a proper tool.
- ⚠ The casing is very flimsy, so use extreme care.

Step 4



- Remove the screws holding the latch in place.

To reassemble your device, follow these instructions in reverse order.

This document was last generated on 2019-07-24 07:26:35 AM.