



# Kensington Hi-Fi Headphones 33137 Headband Inner Cover

This guide shows how to remove the inner headband cover of the Kensington Hi-Fi Headphones 33137.

Written By: Alexis Carr



---

## INTRODUCTION

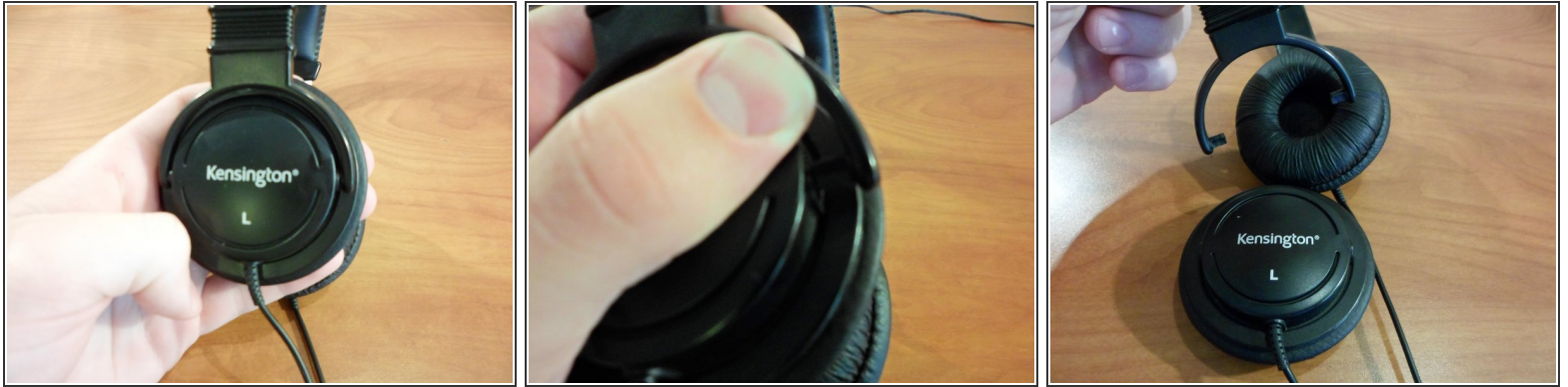
The inner headband cover of the Kensington Hi-Fi Headphones 33137 covers the inside components of the headband. The inner headband cover must be removed during the few first steps of many repairs. This guide shows how to remove this piece.

---


### TOOLS:

- [Phillips #0 Screwdriver](#) (1)

## Step 1 — Inner Headband Cover

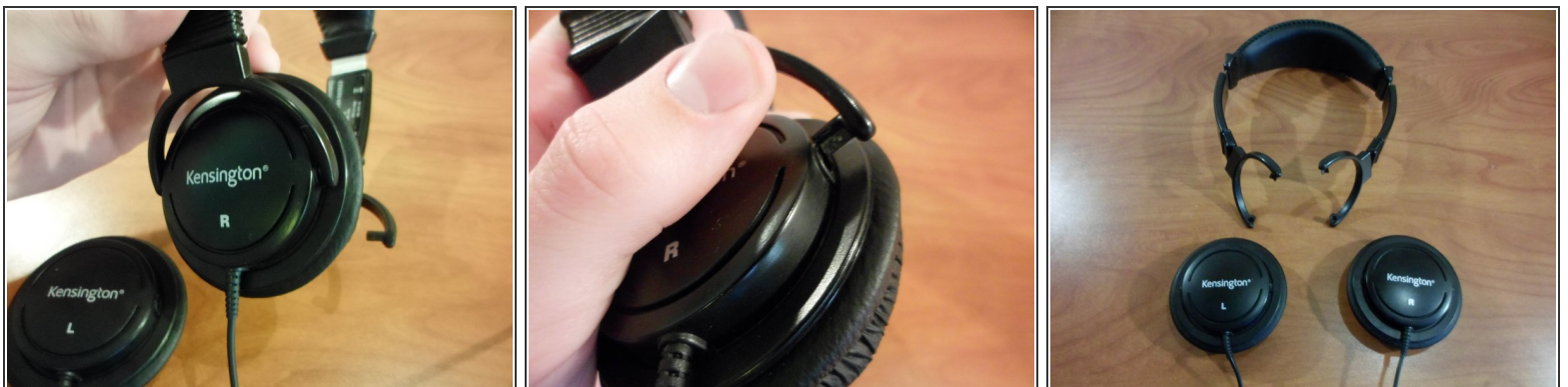


- Starting with the left speaker first, pull out one side of the speaker clamp where the clamp enters the hole on the speaker cover.

 Do not pull out the speaker clamp with too much force, or it may break.

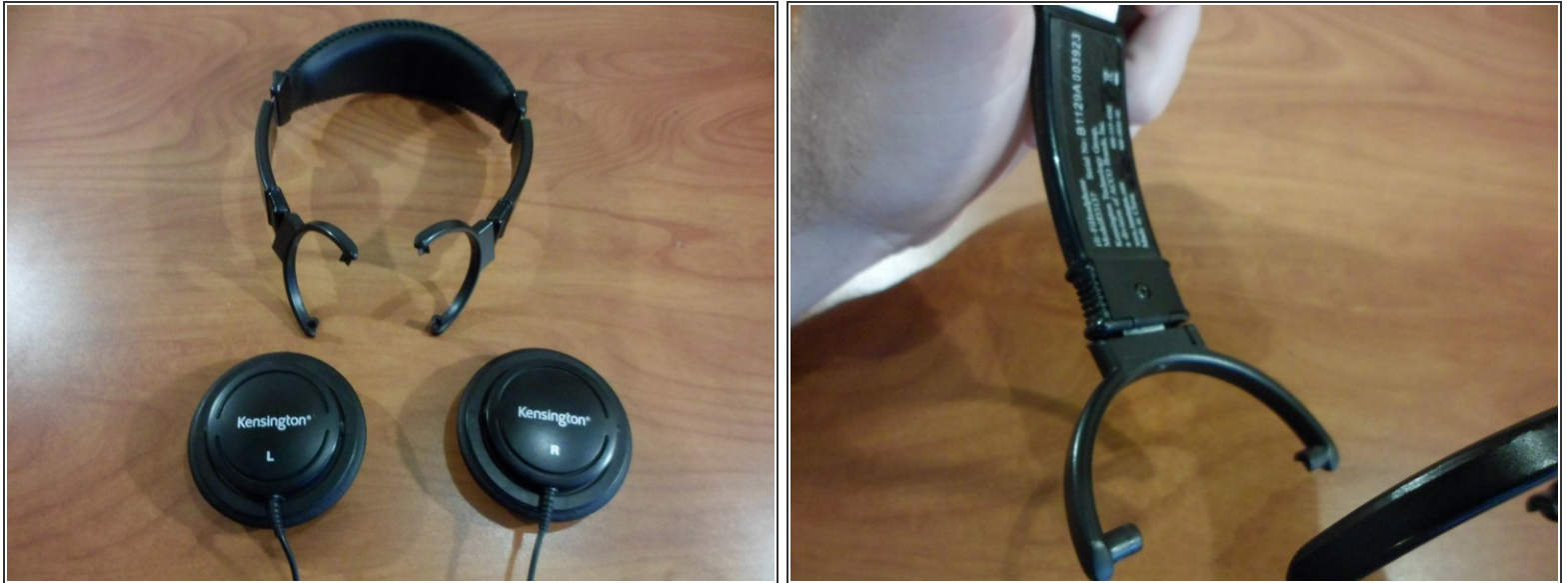
- After one side of the speaker clamp is removed from the speaker cover, pull the other side of the speaker clamp out.

## Step 2



- Repeat the process in Step 1 to remove the right speaker clamp.

## Step 3



**i** This picture shows the headphones with the speakers detached. Steps 1 and 2 are not necessary to replace the headband covers, however they do make the process easier.

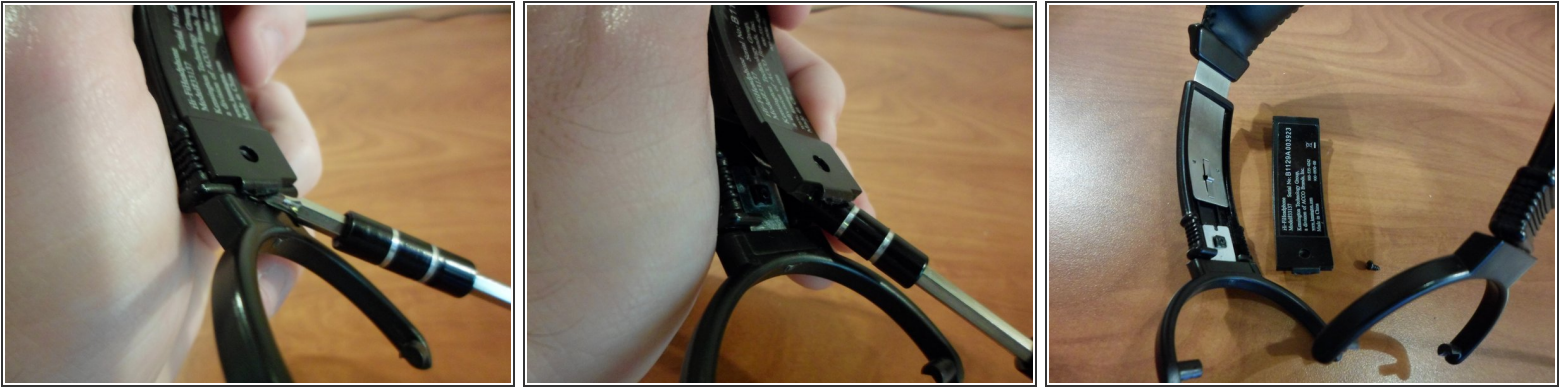
- Turn the headphones so that the inner headphone cover is visible.

## Step 4



- Use the Phillips #00 screwdriver to loosen and remove the screw holding the inner headphone cover in place.
- ⓘ The screw dimensions are as follows: Length to Head = 4 mm, Head Length = 1.5 mm, Head Diameter = 3.5 mm, Major Diameter = 2 mm, Pitch = 0.5 mm.
- ⓘ All steps can be followed on both the left or right side of the headphones to remove inner coverings.

## Step 5



- Use the screwdriver to pry the inner headband covering loose.
- ⚠ Do not push the inner covering panel too hard, or the plastic will break. Only apply enough pressure to lift the panel up slightly.
- Once the inner covering is loose, pull it free from the headband with your fingers and set it aside.
- ⚠ Make sure to pull the inner cover free gently do avoid losing the adjustment piece within the cover. It falls out easily and can be lost.

To reassemble your device, follow these instructions in reverse order.