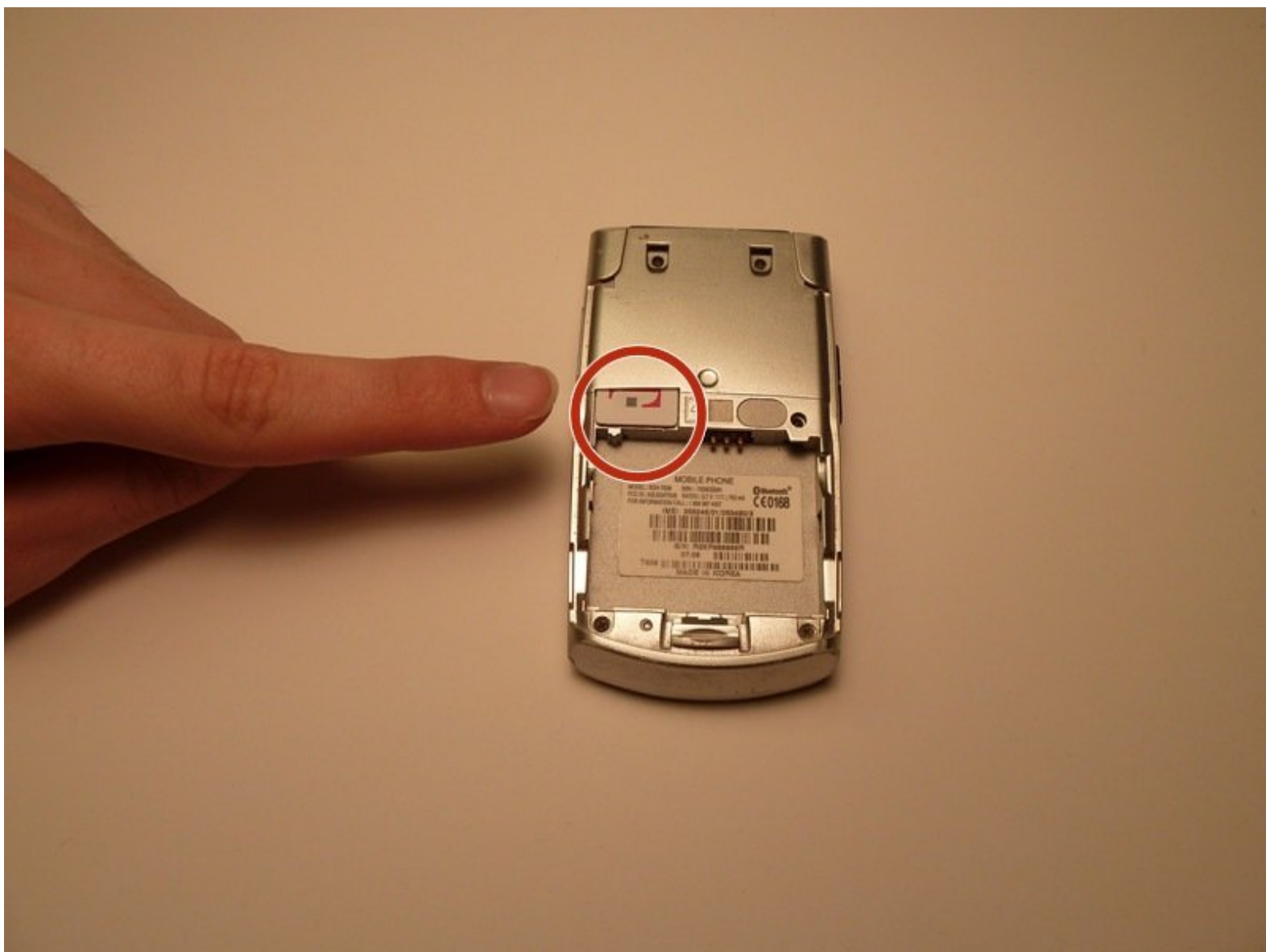




Samsung SGH-T639 SIM Card Replacement

This guide will give instructions for removing the SIM card of the Samsung SGH-T639.

Written By: Yi Ren



INTRODUCTION

This guide contains photos that do not include pictures of the back cover or battery. However, the instructions have been adjusted to reflect this lack of visual aid.

Step 1 — Battery



- Flip the phone over and take off the back cover

i Note: These images do not contain the back cover or battery of the phone.

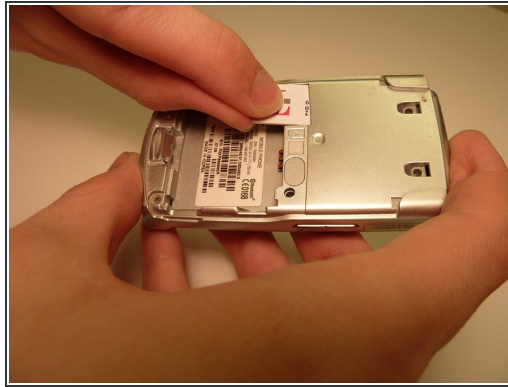
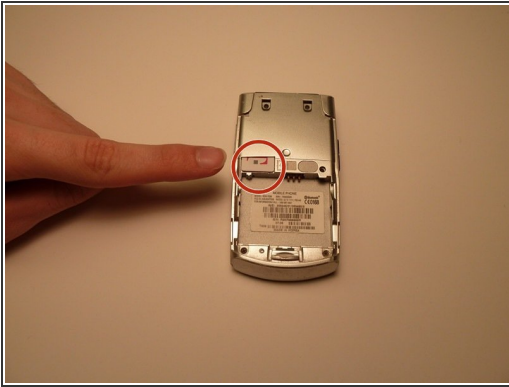
Step 2



- Use button to remove battery from the phone.

i Note: These images do not contain the back cover or battery of the phone.

Step 3 — SIM Card



- Locate SIM card
- Slide SIM card down and gently pull out of the card slot

To reassemble your device, follow these instructions in reverse order.

This document was last generated on 2019-07-16 03:04:53 AM.