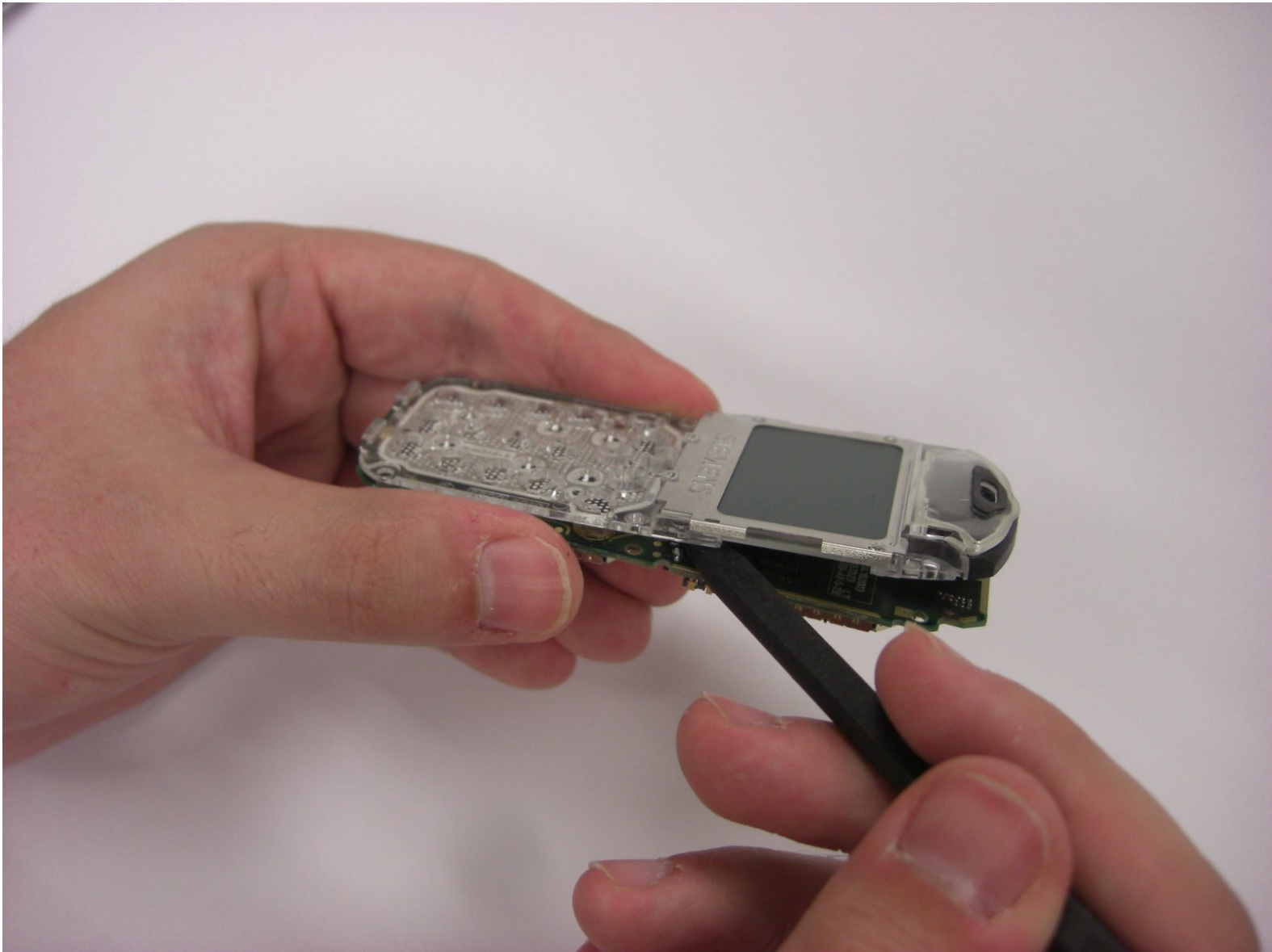




Disassembling Siemens A56 Motherboard from Keypad Interface

This guide will instruct the user how to separate the motherboard from the keypad interface.

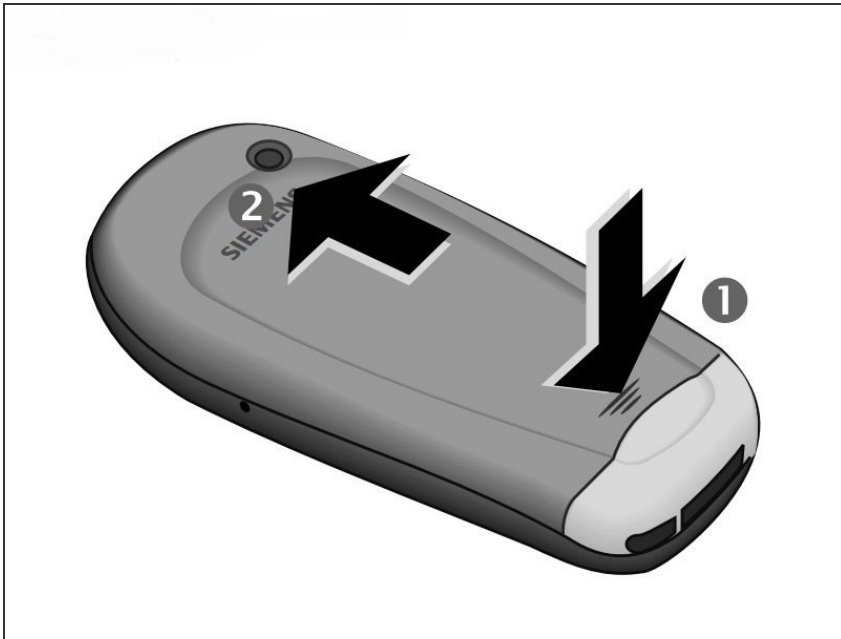
Written By: Joseph Casey



 **TOOLS:**

- [Spudger](#) (1)
 - [T5 Torx Screwdriver](#) (1)
-

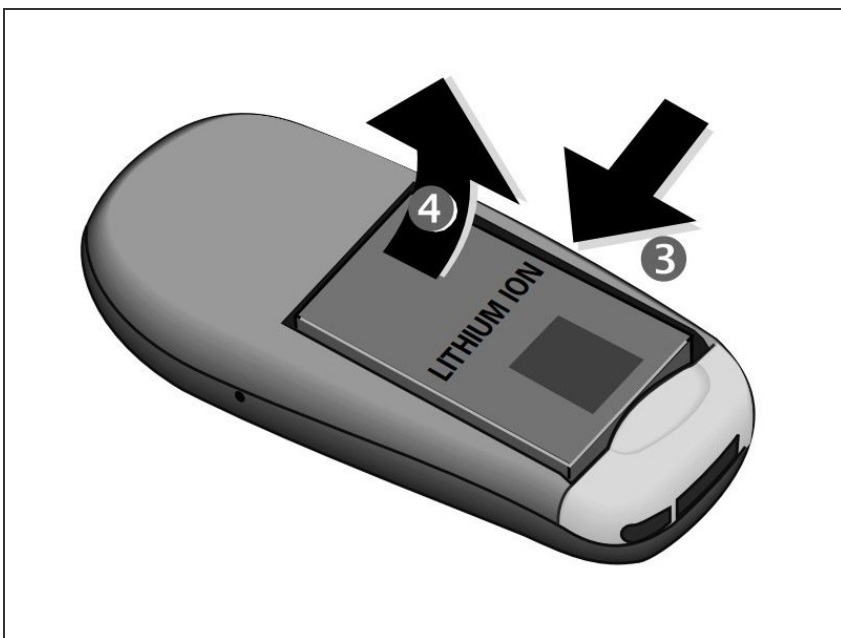
Step 1 — Battery



- Press down on the grooved area firmly in the direction of arrow #1.
- While maintaining the downwards pressure, push the back cover in the direction of arrow #2 until the back cover slides off.

i Photos taken from:
<http://theinformr.com/uploads/manuals/si...>

Step 2

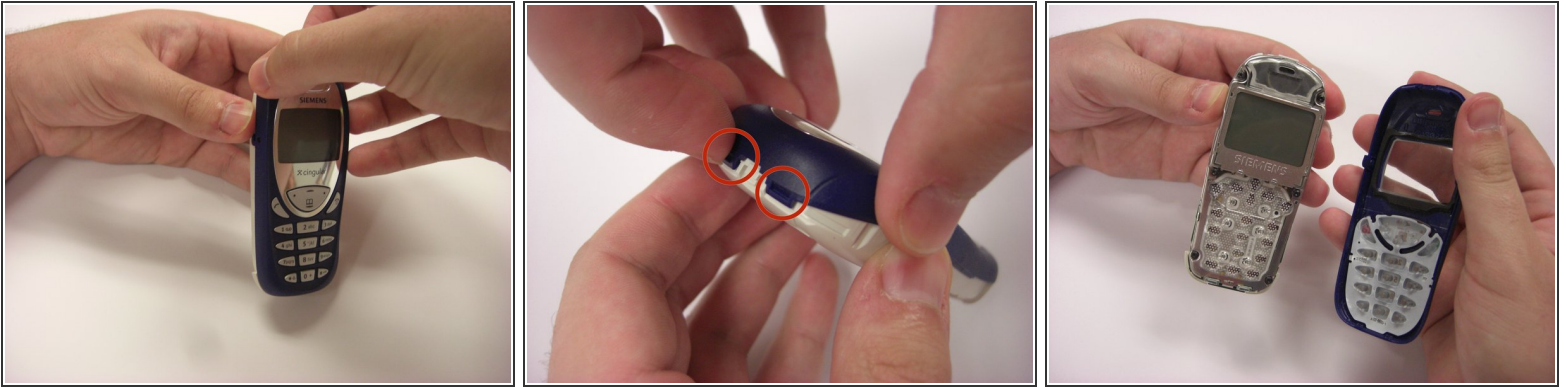


- !** Turn off the phone before removing the battery to avoid damage.
- Press the latch on the battery in the direction of arrow #3.
- Lift battery at the cutout on the side of the phone, then tilt upwards and remove.

i It may be necessary to use the tip of a fingernail or a plastic lifting tool to remove the battery.

i Photos taken from:
<http://theinformr.com/uploads/manuals/si...>

Step 3 — Front Plate



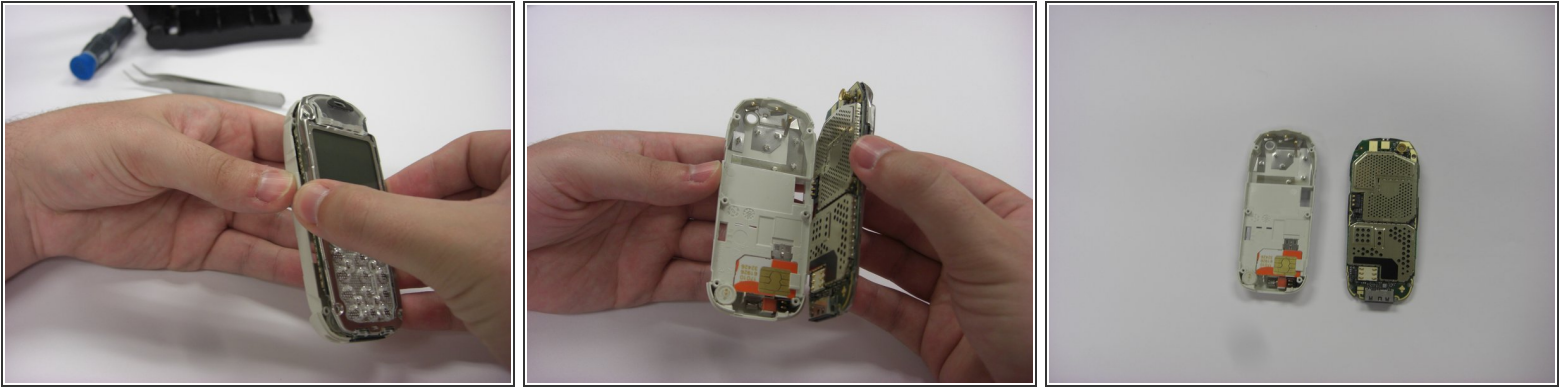
- Firmly grasp the white casing of the phone with one hand and the blue cover with the other hand as seen in the first picture.
- Pull up on the two plastic clips at the top of the phone.
- While the clips are pulled up, pull the blue cover away from the white casing to remove it.

Step 4 — Back Plastic Cover




- Along the side of the metal frame of the phone, locate the six screws.
 - Using a T5 screwdriver bit, unscrew the six 1/4 inch screws and store them in a safe place.
- ⚠** The screws are very small and can strip easily, so proper care is required when removing and storing the screws.

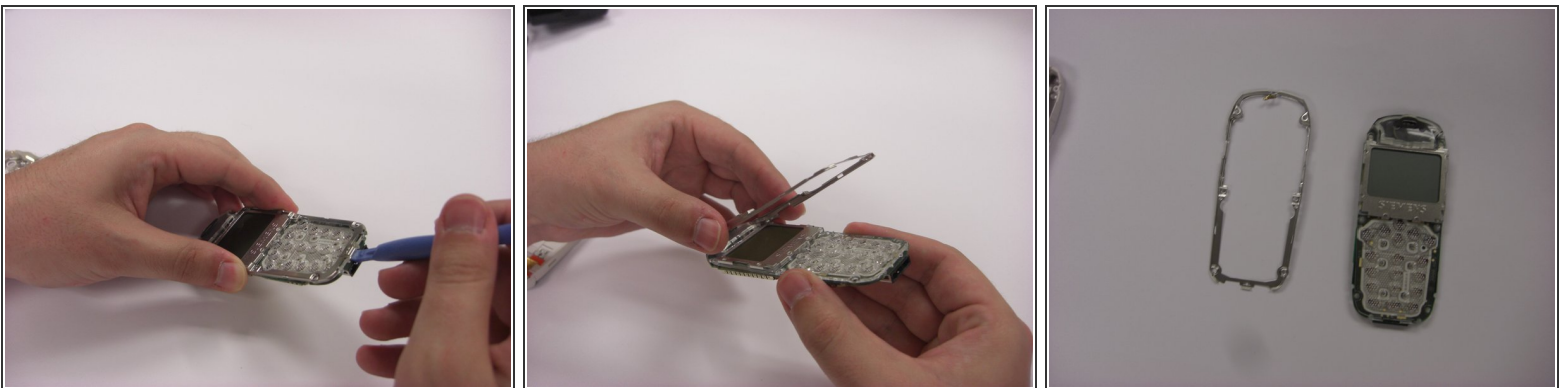
Step 5



- To remove the back plastic cover, grasp the device with both hands as seen in the first picture.
- Gently remove the motherboard from the back plastic cover.

 The motherboard is fragile, so proper care is necessary when handling and storing in order to prevent damage.

Step 6 — Motherboard Metal Frame



- Turn over the keypad interface and using the blue plastic opening tool, gently pry the bottom of the metal frame.
- Once loosened, the metal frame should be able to be lifted from the motherboard.

Step 7 — Motherboard from Keypad Interface



- Insert the fine-tipped spudger in between the motherboard and the keypad interface.
- Gently work the spudger across the length of the motherboard.
- ⓘ An adhesive exists between the motherboard and the keypad interface.
- Once loosened, the motherboard should easily separate from the keypad interface.

To reassemble your device, follow these instructions in reverse order.