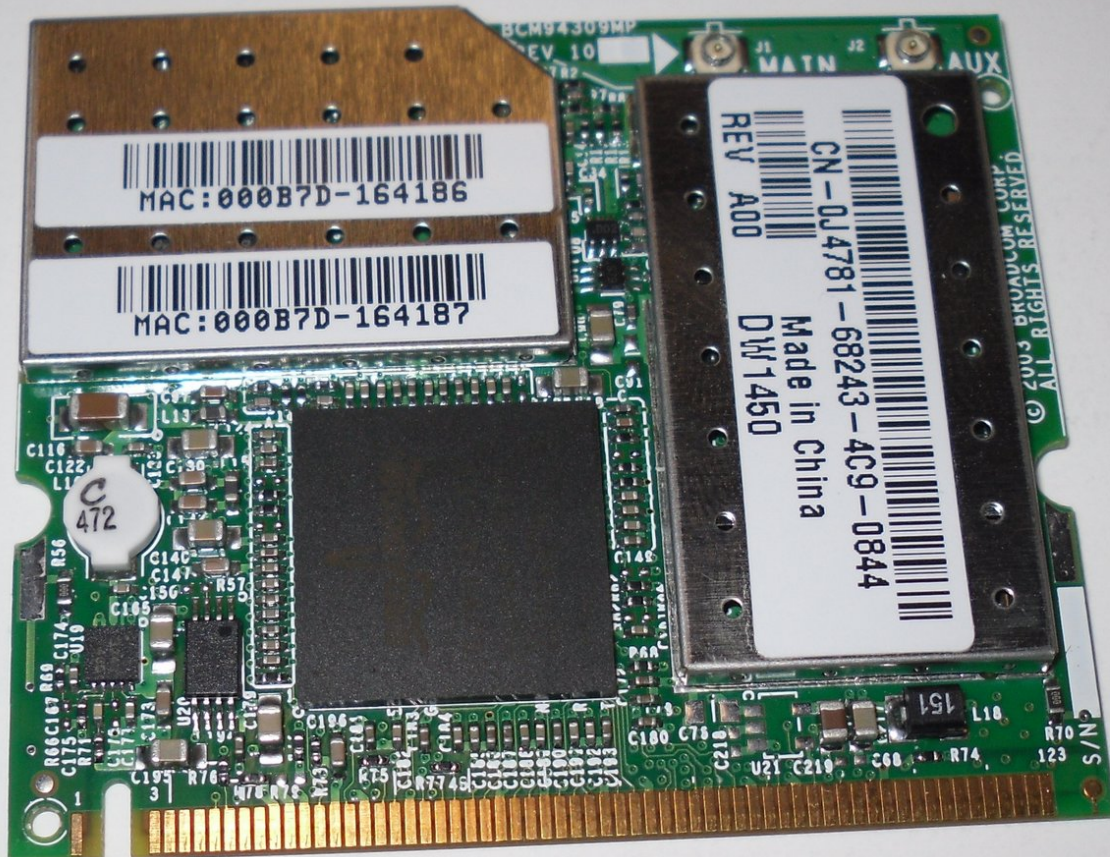




Removing Dell Inspiron 1150 Wireless MiniPCI Card

How to locate and remove the 1150 Wireless MiniPCI Card.

Written By: Teja



INTRODUCTION

The purpose of this guide is to demonstrate how to locate and remove the 1150 Wireless MiniPCI Card.

TOOLS:

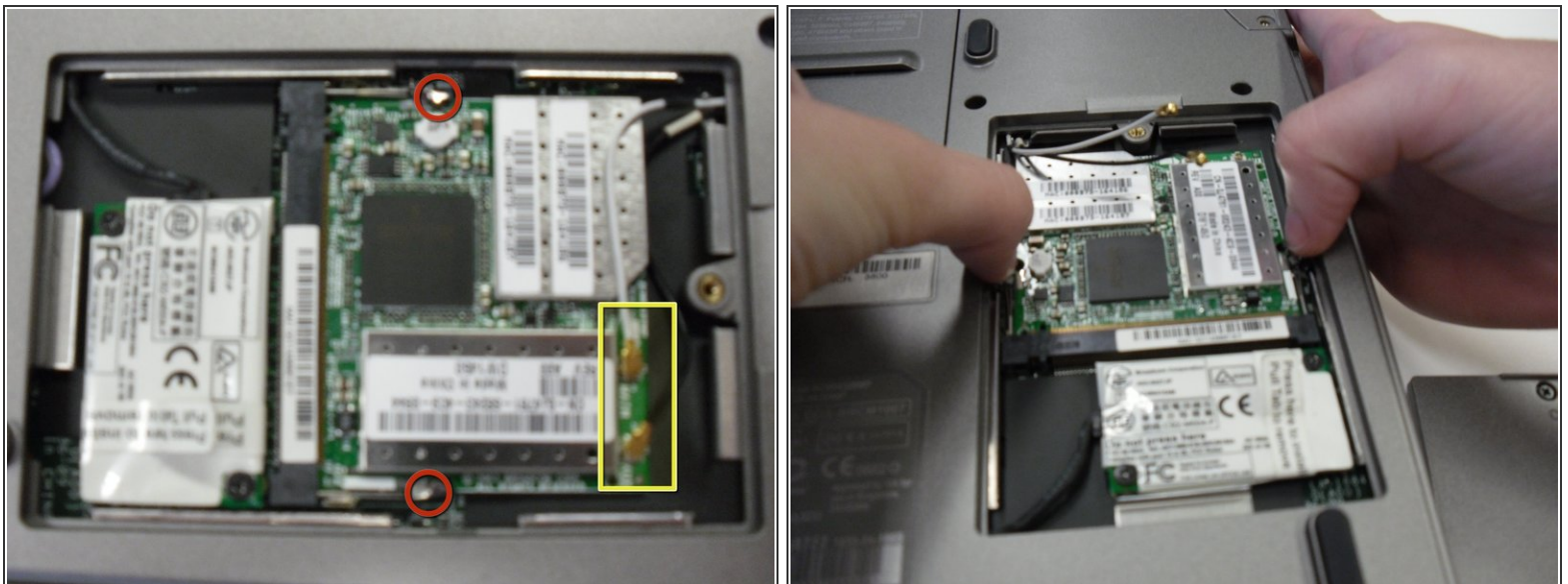
- [Phillips #00 Screwdriver](#) (1)
 - [Spudger](#) (1)
-

Step 1 — Removing Dell Inspiron 1150 Wireless MiniPCI Card



- Turn the laptop upside down and locate the panel labeled C.
- Unscrew the single screw holding the cover in place.
- lift up the cover and remove it to exposed the Wireless MiniPCI Card.

Step 2



- Using a plastic spudger or similar, gently pry the grey and black wires off.
- ⚠ The grey and black wires are the antenna wires so be careful not to damage them
- Gently pull the retaining clips away from the board so that the board pops up.

Step 3



- Lift the board up and out of the mini PCI slot at an angle of about 35 - 45 degrees

To reassemble your device, follow these instructions in reverse order.