



# Toshiba Portege M400 Hard Drive Replacement

Step by step directions for removing the hard drive of a Toshiba Portege M400 Laptop.

Written By: Lucas



 **TOOLS:**

- [Pro Tech Toolkit](#) (1)
-

## Step 1 — Hard Drive



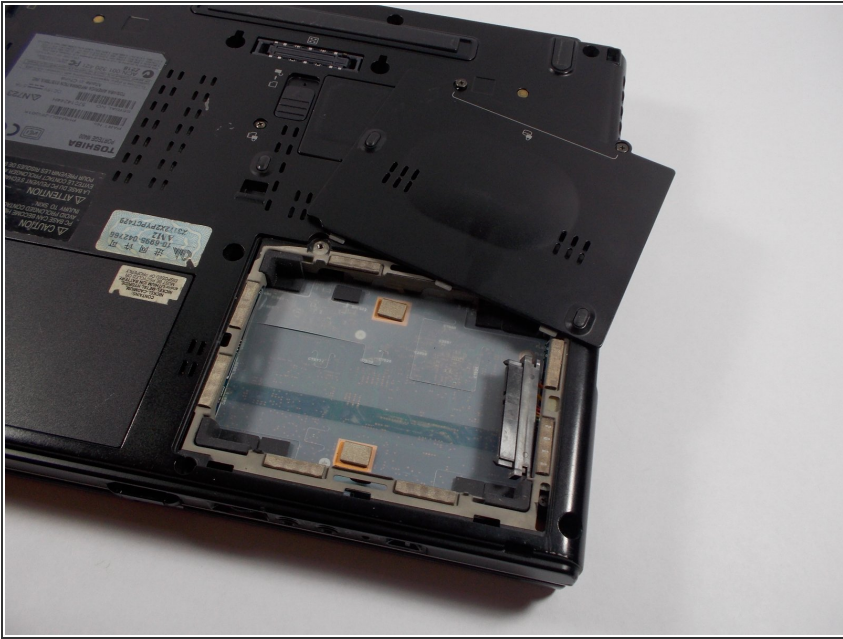
- Remove the two circled screws and place them in a safe location.

## Step 2



- Gently lift the plastic plate as shown in the image and slide it out from its position.

### Step 3



- Gently lift the plastic tab and carefully remove the hard drive from its connective port.
- You are done!

To reassemble your device, follow these instructions in reverse order.

This document was last generated on 2019-07-23 07:53:17 PM.