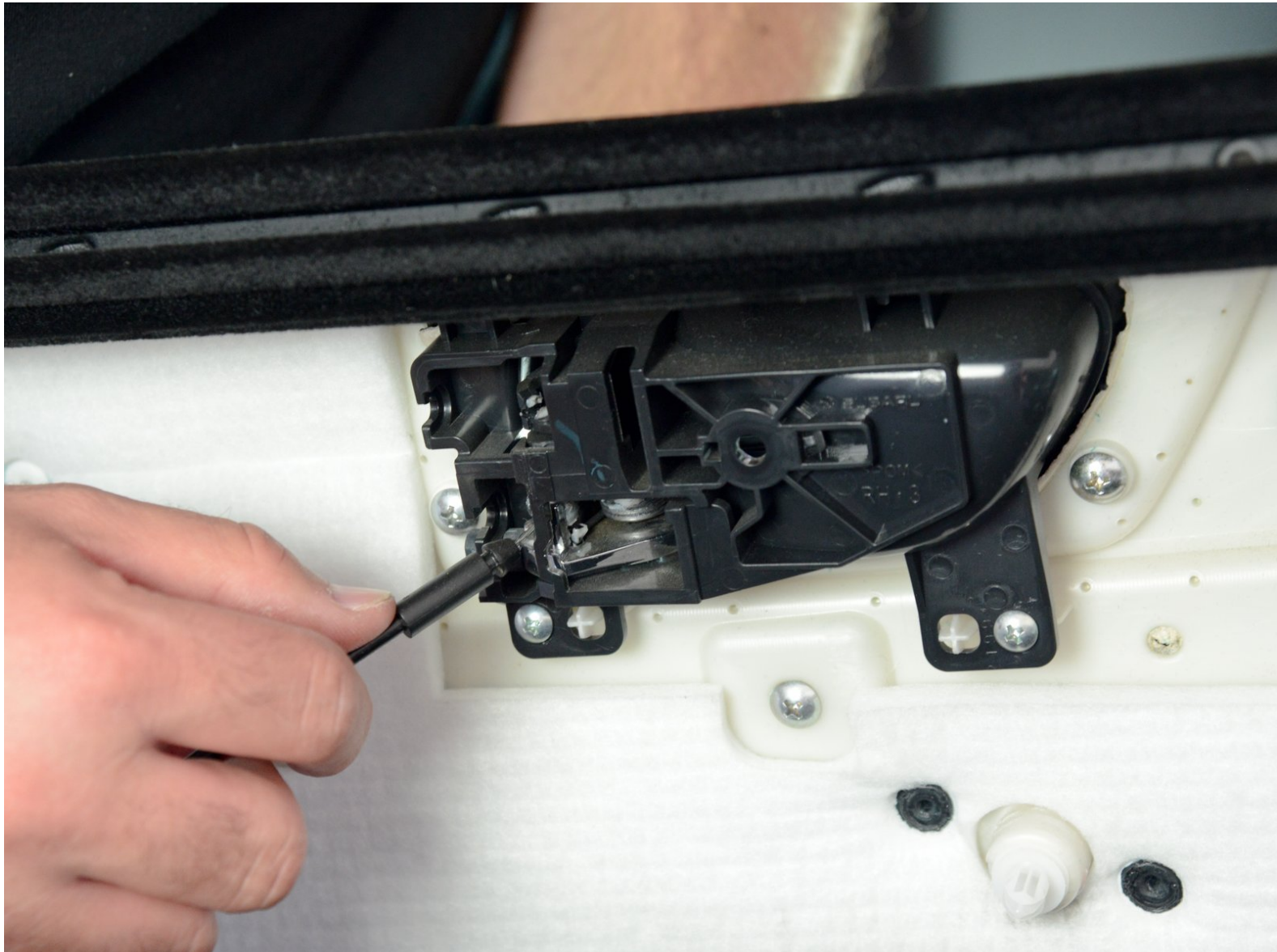




2010-Present Subaru Legacy Rear Door Reassembly

This is a quick explanation on how to reconnect the door panel back to the door.

Written By: Miroslav Djuric



INTRODUCTION

This is a quick explanation on how to reconnect the door panel back to the door.

Step 1 — 2010-Present Subaru Legacy Rear Door Reassembly



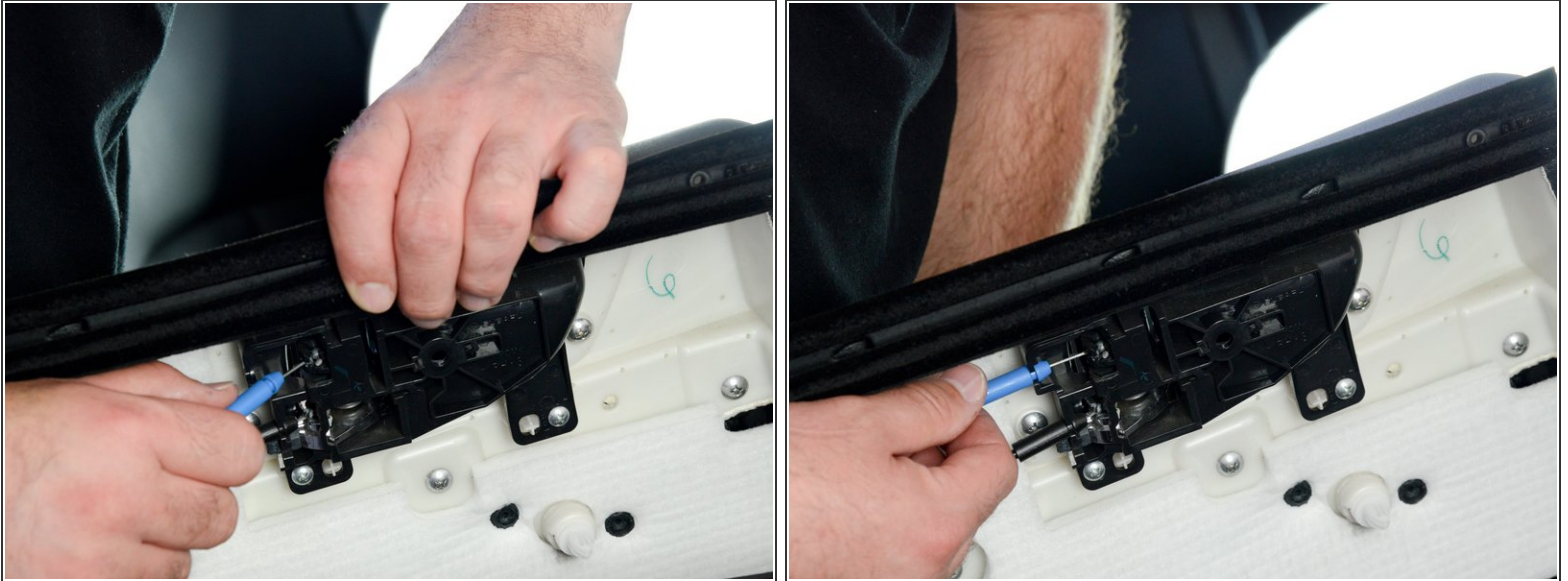
- Insert the metal ball into the plastic door pull handle assembly.
- With the ball inserted, route the steel cable through the assembly and align the black plastic notch on the cable with the plastic notch on the door pull handle assembly.
- Press the cable notch into the door pull handle notch and snap it into place.

Step 2



- Hold the door lock in the "unlocked" position with your thumb. This will make it easier to insert the metal ball into the door lock assembly.

Step 3



- Insert the metal ball into the plastic door lock assembly.
- With the ball inserted, route the steel cable through the assembly and align the blue plastic notch on the cable with the plastic notch on the door lock assembly.
- Press the cable notch into the door lock notch and snap it into place.

To reassemble your device, follow these instructions in reverse order.