



Magellan RoadMate 1200 Battery Replacement

Written By: Ross Light



INTRODUCTION

You can change the battery by opening up the GPS.

TOOLS:

- [Phillips #00 Screwdriver](#) (1)
-

Step 1 — Back Cover



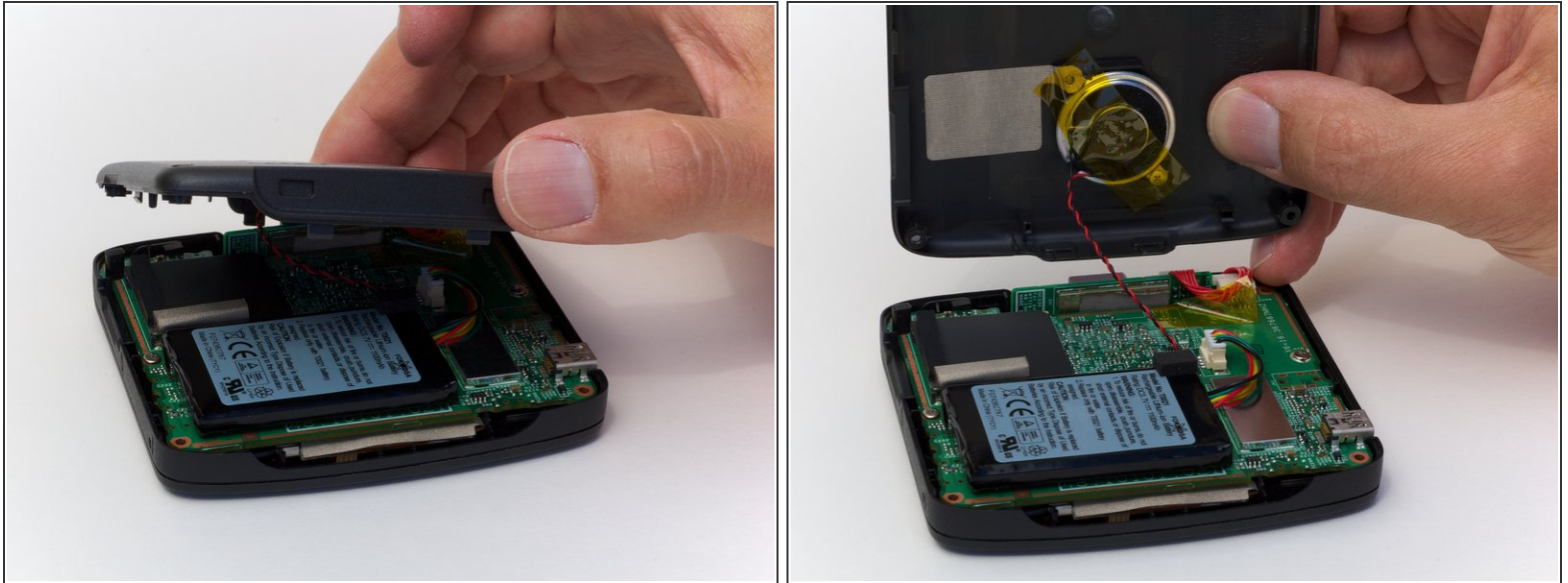
- Remove the four rubber caps from the back by using the Phillips #00 screwdriver.

Step 2




- Remove the four screws holding the cover in place by using the Phillips #00 screwdriver.

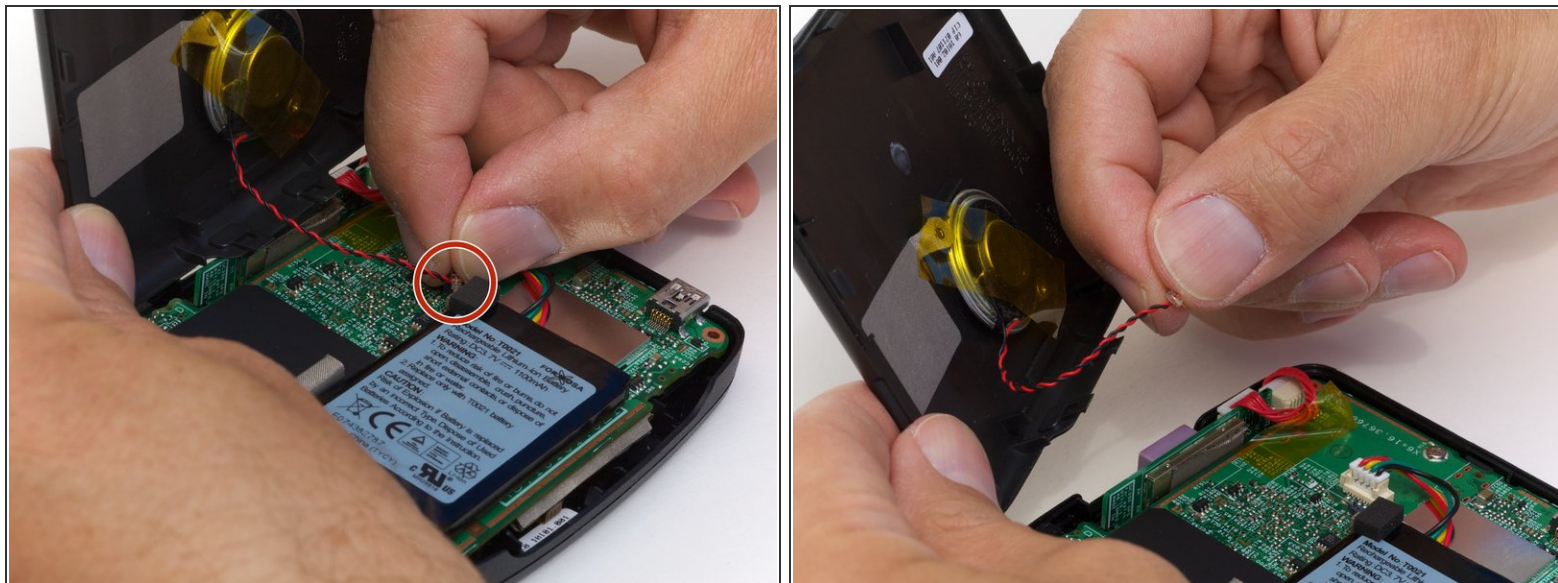
Step 3



- Remove the back cover from the device by separating the back cover along its seam.

 Slowly lift the cover—the speaker is screwed onto the back cover and is connected to the circuit board.

Step 4



- Pull the speaker cord, horizontally, by its base, away from the motherboard.
- ☞ When reassembling, make sure that you plug the terminal in the same way. The black wire should be on the side farthest from the battery.

Step 5 — Battery



- Disconnect the battery connector from the circuit board.
- Pry the battery off the circuit board. The adhesive attaching it shouldn't require any other tools.

To reassemble your device, follow these instructions in reverse order.