



# Magellan RoadMate 1200 Back Cover Replacement

How to replace a Magellan RoadMate 1200 back cover.

Written By: Ross Light



---

## INTRODUCTION

After you remove the back cover, you can get to any part of your RoadMate.

---

### TOOLS:

- [Phillips #00 Screwdriver](#) (1)
-

## Step 1 — Back Cover



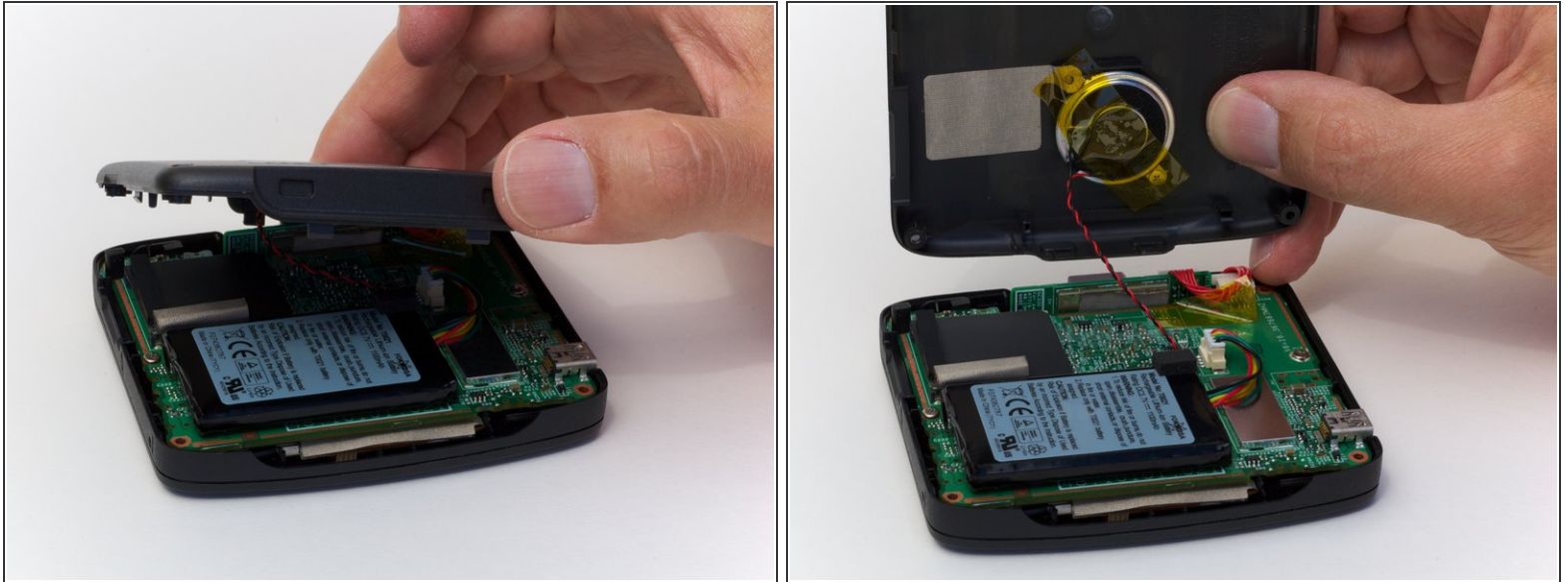
- Remove the four rubber caps from the back by using the Phillips #00 screwdriver.

## Step 2




- Remove the four screws holding the cover in place by using the Phillips #00 screwdriver.

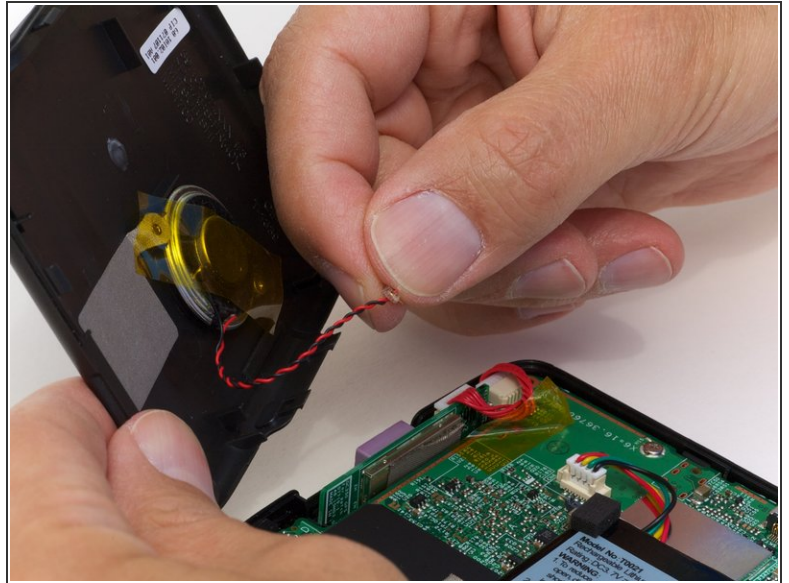
## Step 3



- Remove the back cover from the device by separating the back cover along its seam.

 Slowly lift the cover—the speaker is screwed onto the back cover and is connected to the circuit board.

## Step 4



- Pull the speaker cord, horizontally, by its base, away from the motherboard.
- ☞ When reassembling, make sure that you plug the terminal in the same way. The black wire should be on the side farthest from the battery.

To reassemble your device, follow these instructions in reverse order.