



Disassembling Toshiba A1304T Back panel

Written By: Christopher



INTRODUCTION

Removing the back panel from the Toshiba AT1304T

If you can't get a hold of a Torx 6 Security Screwdriver, a small flathead can be used as a substitute

TOOLS:

- [Needle](#) (1)
 - [Flathead 3/32" or 2.5 mm Screwdriver](#) (1)
 - [T8 Torx Security Bit Screwdriver](#) (1)
-

Step 1 — Back panel



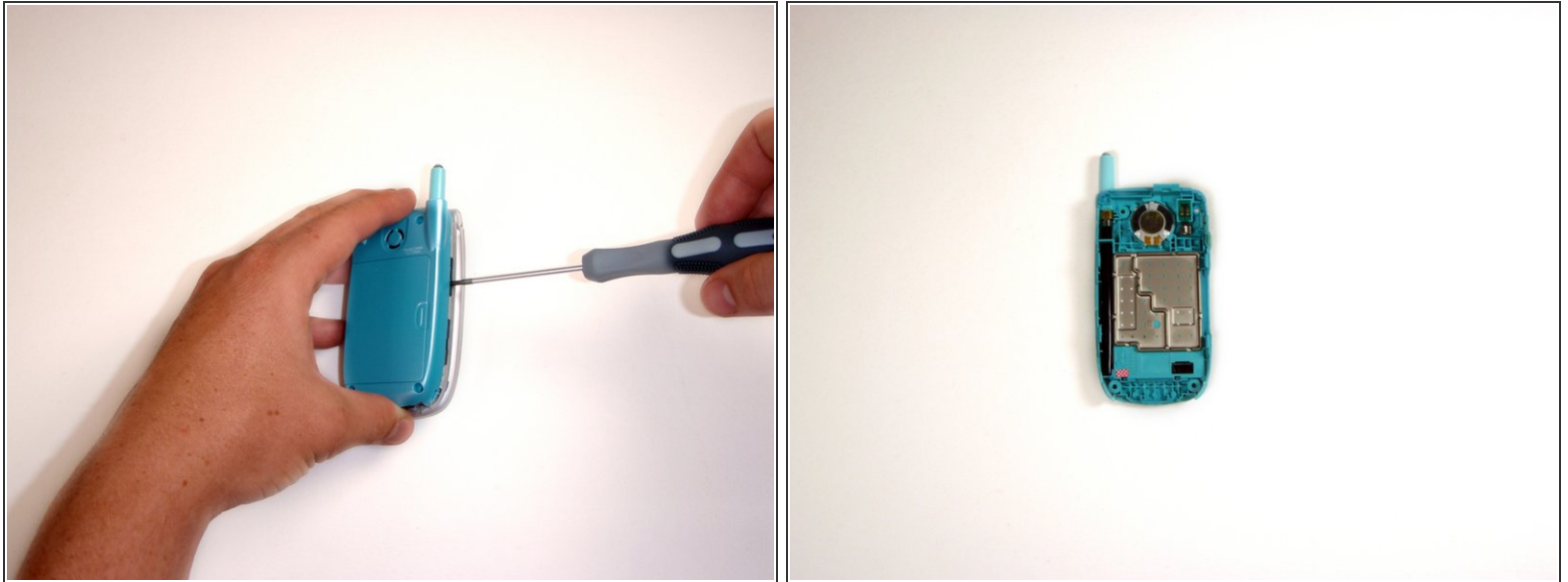
- Using a thumb-tack, push-pin, or similar pin, remove the four plastic stoppers located on the back panel.

Step 2



- With the T8 Torx Security Bit Screwdriver, remove the four screws in the designated locations.
- ⓘ The T8 Torx Security Bit Screwdriver can be substituted with a small flathead screwdriver. Screw removal may be slightly more difficult however.

Step 3



- If needed, use the flathead screwdriver to gently pry the panel from the phone.
- Using your fingers, lift the panel from the device.

To reassemble your device, follow these instructions in reverse order.

This document was last generated on 2019-07-10 10:17:01 AM.