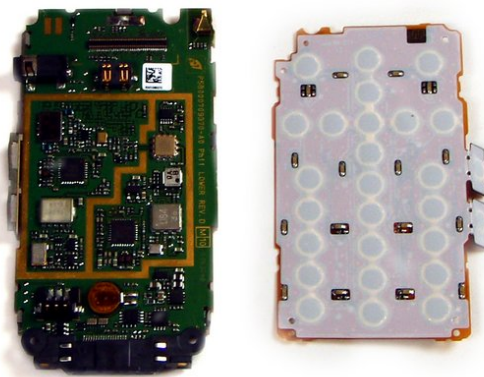




# Toshiba A1304T Keypad Replacement

Written By: Christopher



## INTRODUCTION

Use this guide to replace your Toshiba AT1304T keypad



### TOOLS:

- [Flathead 3/32" or 2.5 mm Screwdriver \(1\)](#)
- [T8 Torx Security Bit Screwdriver \(1\)](#)



### PARTS:

- [Toshiba A1304T Keypad \(1\)](#)

## Step 1 — Back panel



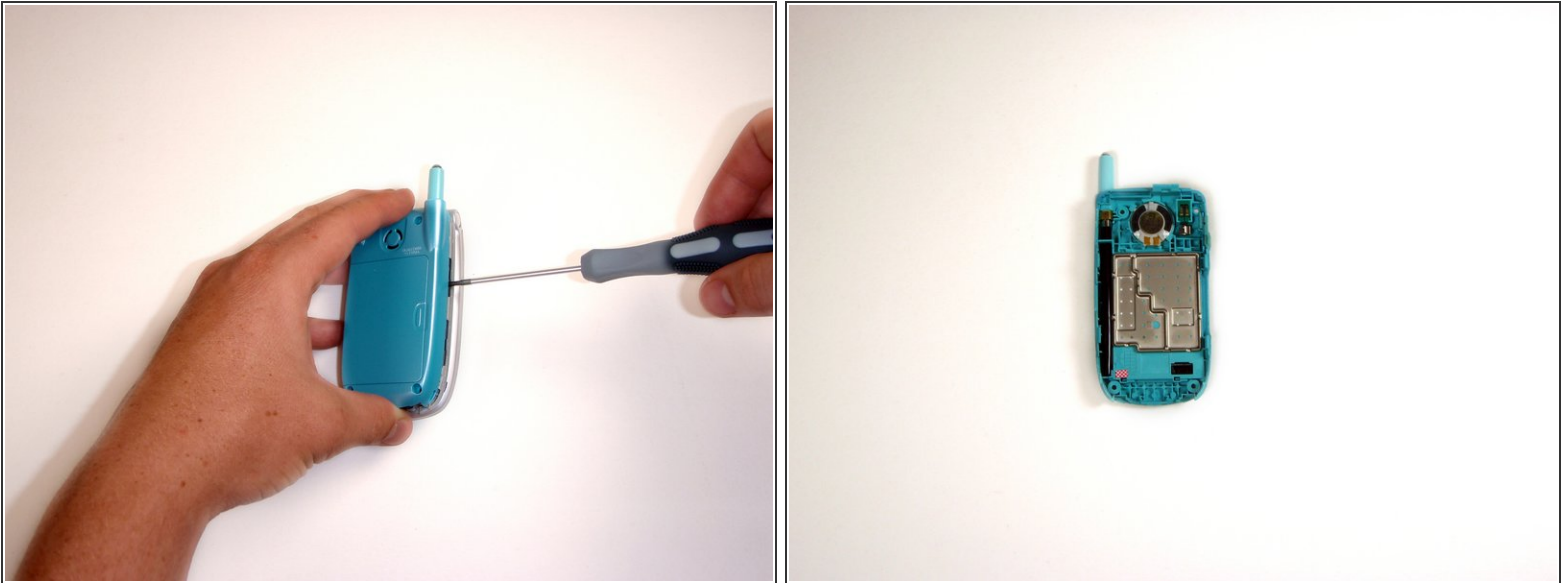
- Using a thumb-tack, push-pin, or similar pin, remove the four plastic stoppers located on the back panel.

## Step 2



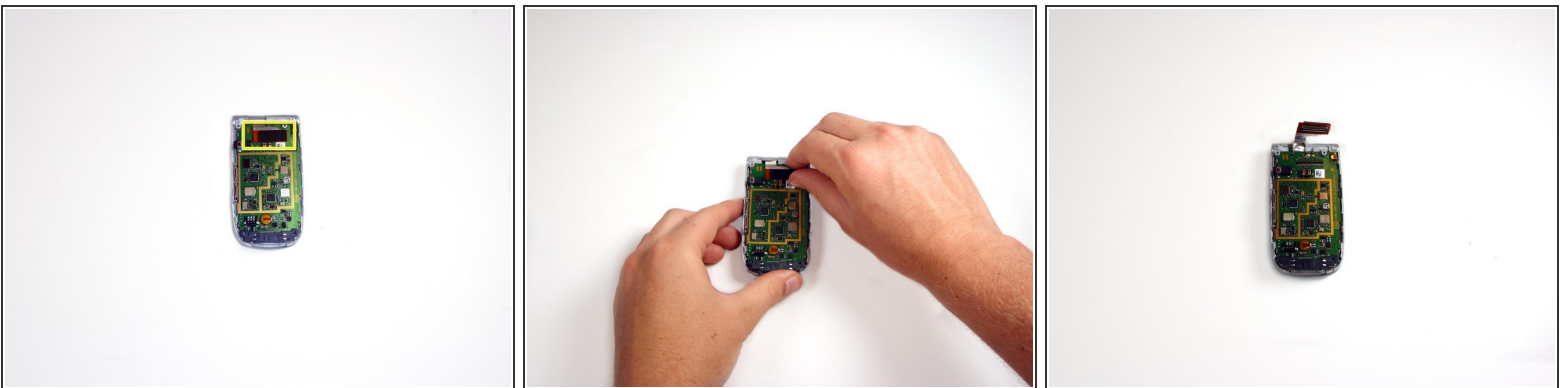
- With the T8 Torx Security Bit Screwdriver, remove the four screws in the designated locations.
- ⓘ The T8 Torx Security Bit Screwdriver can be substituted with a small flathead screwdriver. Screw removal may be slightly more difficult however.

### Step 3



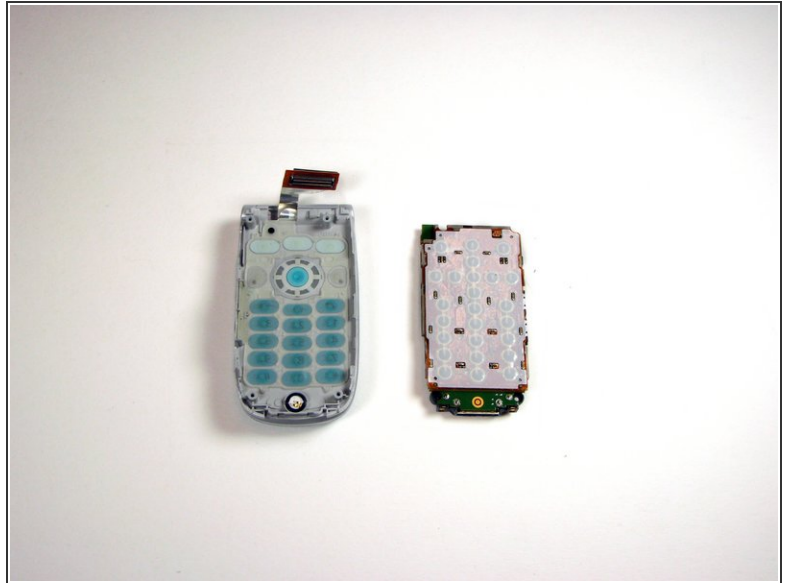
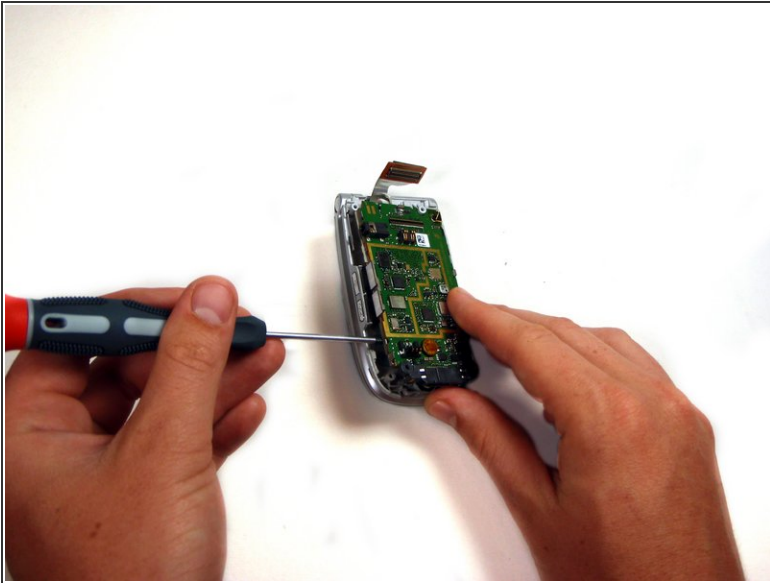
- If needed, use the flathead screwdriver to gently pry the panel from the phone.
- Using your fingers, lift the panel from the device.

### Step 4 — Keypad



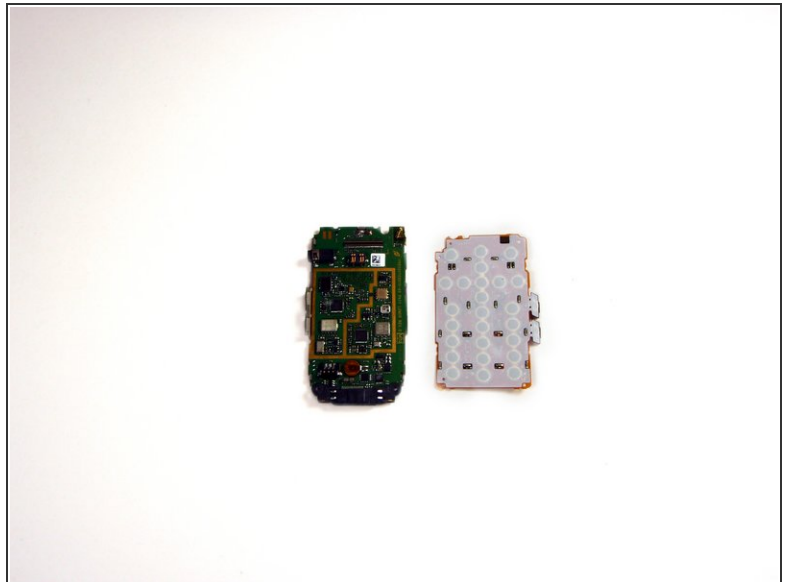
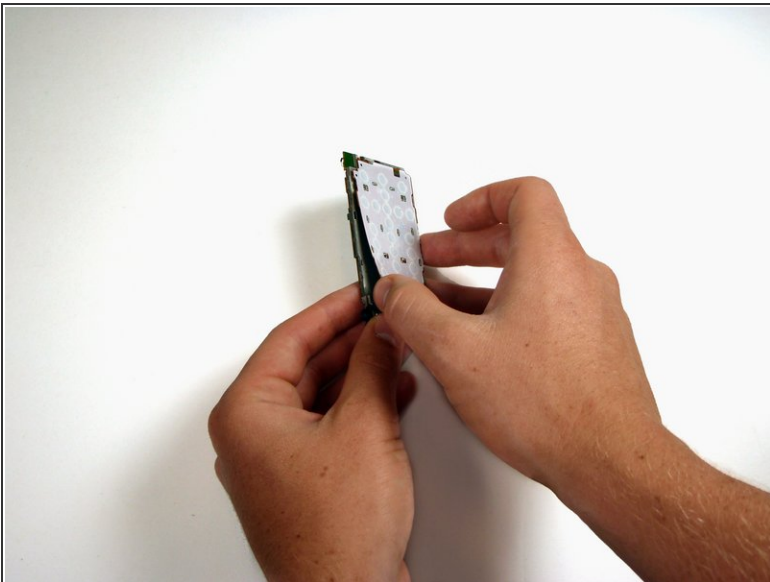
- Use your fingers to detach the ribbon wire located on the top of the logic board, as shown.

## Step 5



- Use a flathead screwdriver to gently pry the logic board and keypad from the device.

## Step 6



- Peel the keypad from the logic board using your thumb.

To reassemble your device, follow these instructions in reverse order.

