



Toshiba A1304T Main LCD Screen Replacement

Written By: Christopher



INTRODUCTION

This guide covers the removal of the main LCD screen and associated housing from the Toshiba A1304T for replacement.

TOOLS:

- [Flathead 3/32" or 2.5 mm Screwdriver](#) (1)
- [T8 Torx Security Bit Screwdriver](#) (1)

PARTS:

- [Toshiba A1304T Main LCD Screen](#) (1)

Step 1 — Front Cover



- Open the phone so that it matches the photos to the left.
- Using a thumb-tack, push-pin, or similar pin, remove the four plastic stoppers located around the main LCD screen.

Step 2



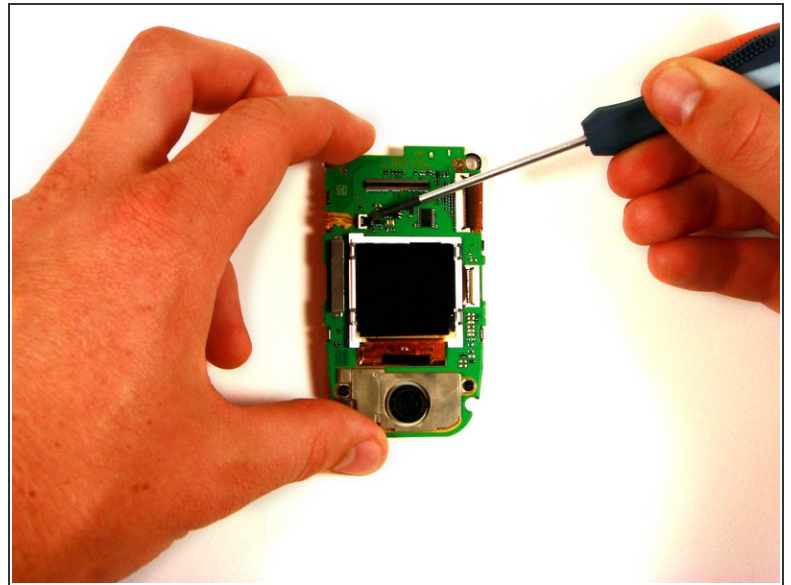
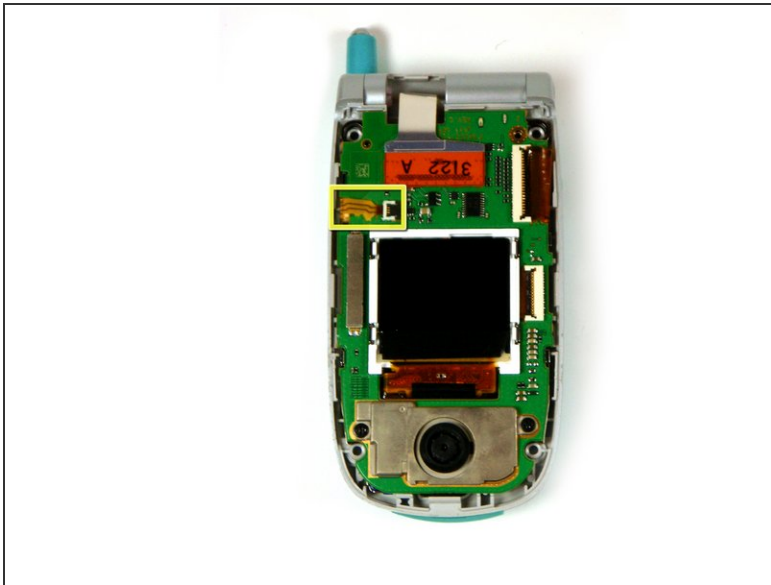
- With the T8 Torx Security Bit Screwdriver, remove the four screws in the designated locations.
- ⓘ The T8 Torx Security Bit Screwdriver can be substituted with a small flathead screwdriver. Screw removal may be slightly more difficult however.

Step 3



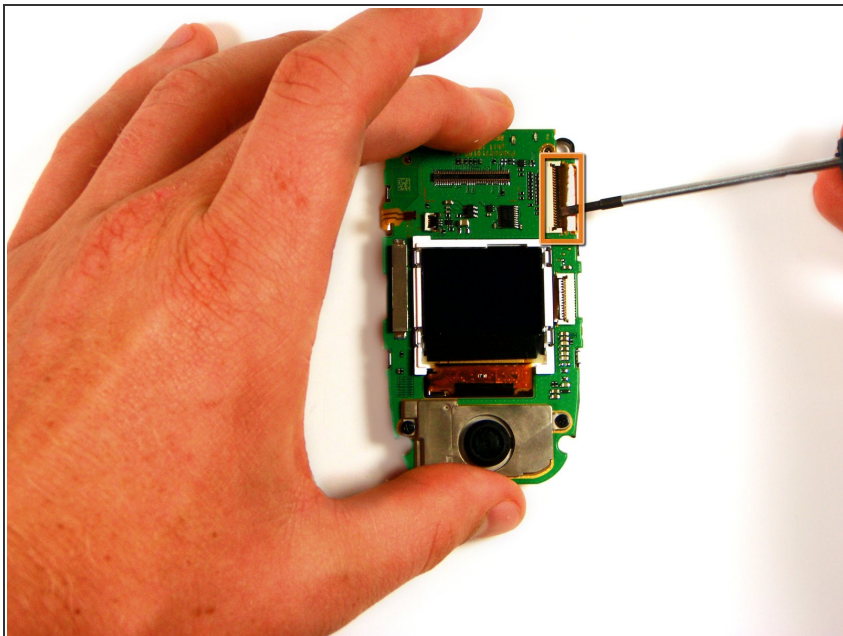
- Insert the head of a flathead screwdriver into the seam between the front cover and the phone.
- Pry gently until the cover gives slightly to create a slightly wider opening. You may hear a distinct pop as you pry.
- Remove the screwdriver and re-insert it into another portion of the seam. Continue making gaps around the cover of the phone until it is completely detached from the body.

Step 4 — Main LCD Screen



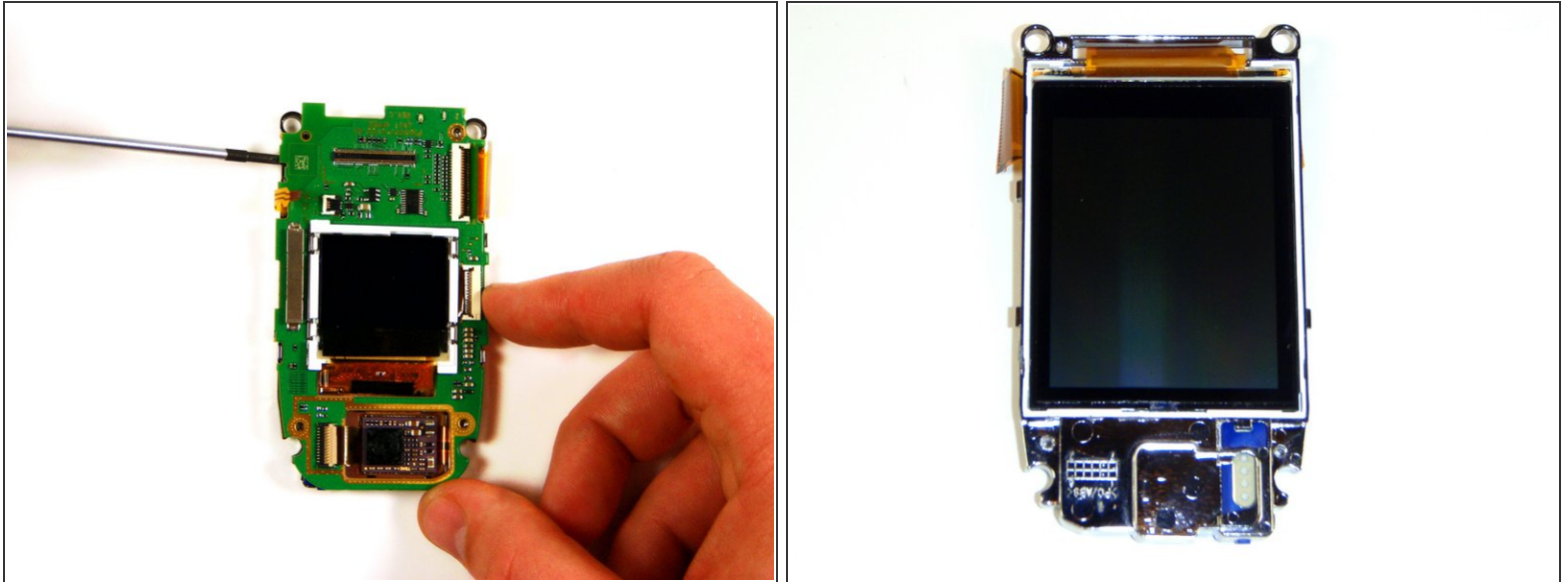
- Using the head of the flathead screwdriver, gently pry the black tab so that it rests in a vertical (or "unlocked") position.
- Pull the orange ribbon-wire to the left, removing it from the white socket.

Step 5



- Just as before, use the head of the flathead screwdriver to pry the black tab into a vertical position, as shown.
- Pull the ribbon wire to the right, freeing it from its socket.

Step 6



- Using the head of the flathead screwdriver, pry the silver plastic casing of the LCD from the video logic board.
 - Repeat as necessary around the device until the silver plastic casing is free.
- ⚠** Attempting to further separate the LCD screen from the silver plastic casing will likely result in severe damage to the screen.

To reassemble your device, follow these instructions in reverse order.