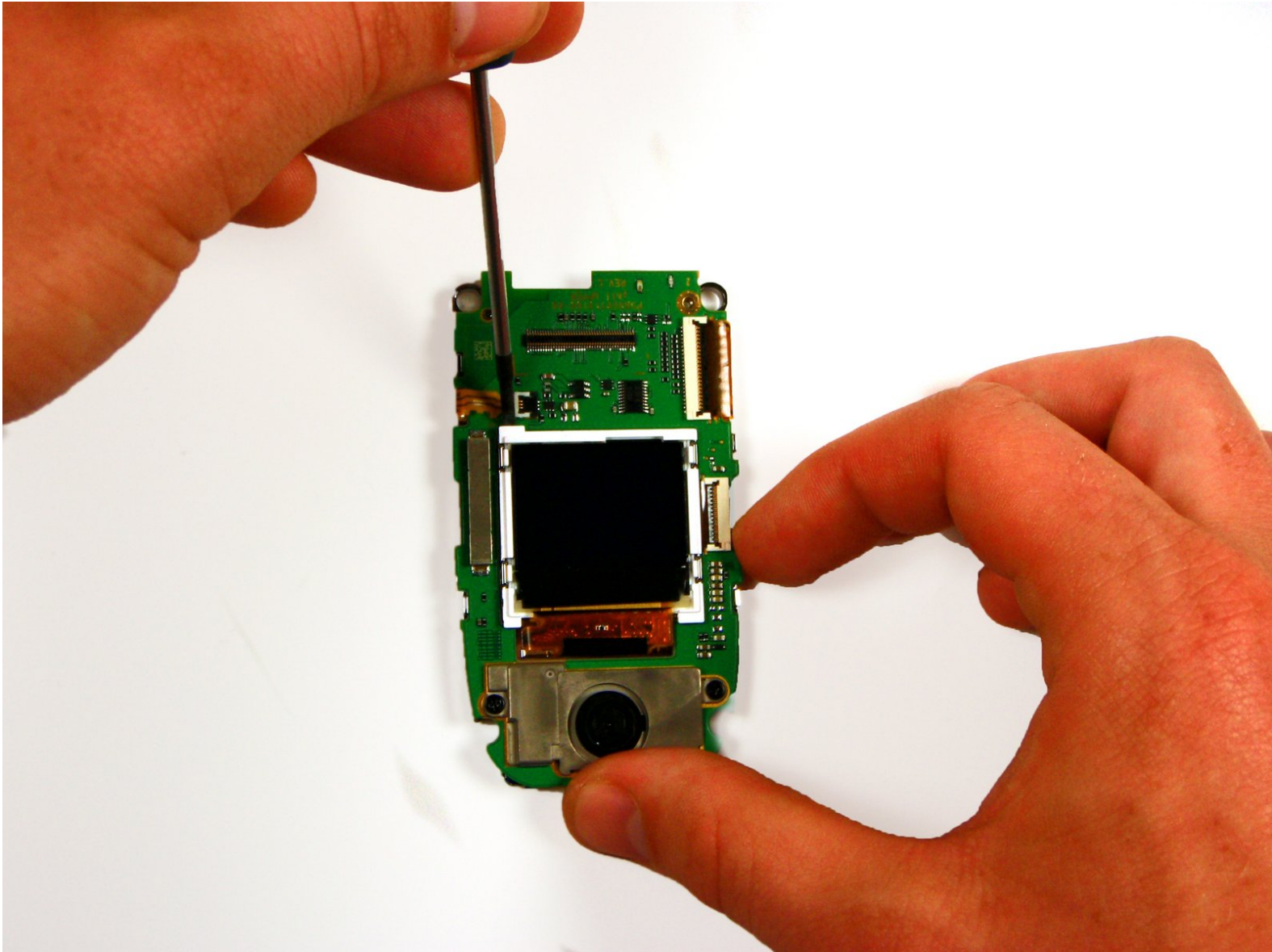




Toshiba A1304T Mini LCD Screen Replacement

Written By: Christopher



INTRODUCTION

Use this guide to replace the mini front LCD screen.

TOOLS:

- Flathead 3/32" or 2.5 mm Screwdriver (1)
- T8 Torx Security Bit Screwdriver (1)

PARTS:

- Toshiba A1304T Mini LCD Screen (1)
-


Step 1 — Front Cover



- Open the phone so that it matches the photos to the left.
- Using a thumb-tack, push-pin, or similar pin, remove the four plastic stoppers located around the main LCD screen.

Step 2



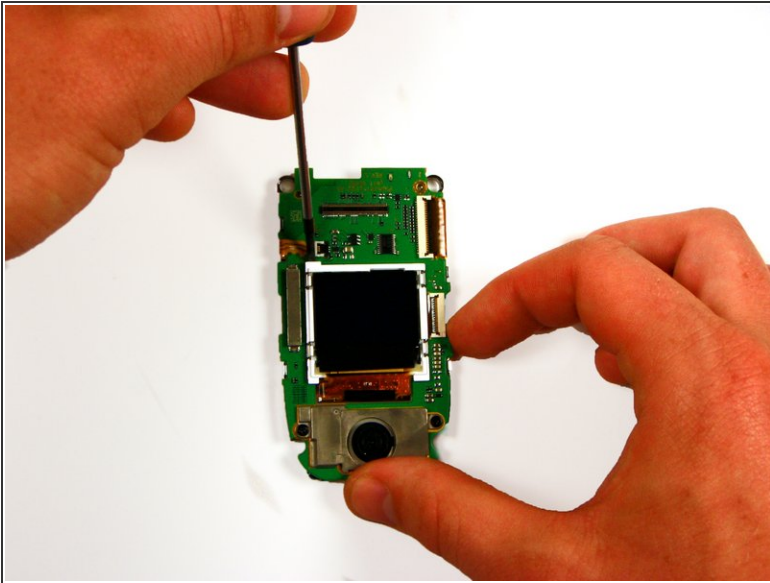
- With the T8 Torx Security Bit Screwdriver, remove the four screws in the designated locations.
-  The T8 Torx Security Bit Screwdriver can be substituted with a small flathead screwdriver. Screw removal may be slightly more difficult however.

Step 3



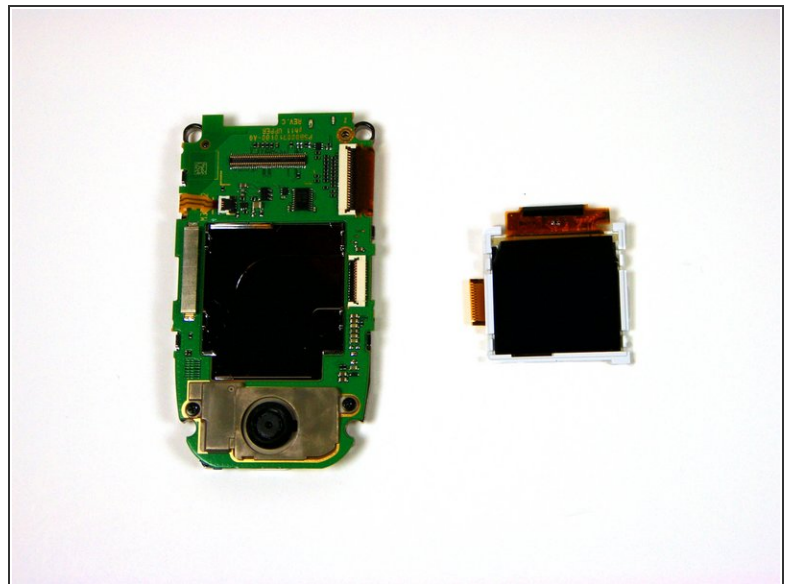
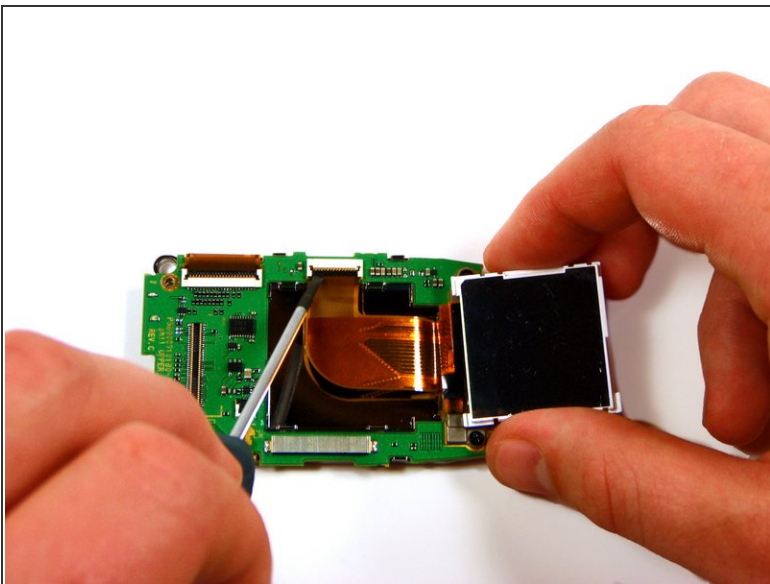
- Insert the head of a flathead screwdriver into the seam between the front cover and the phone.
- Pry gently until the cover gives slightly to create a slightly wider opening. You may hear a distinct pop as you pry.
- Remove the screwdriver and re-insert it into another portion of the seam. Continue making gaps around the cover of the phone until it is completely detached from the body.

Step 4 — Mini LCD Screen



- Using a small Phillips screwdriver, gently pry off the LCD screen from the board.

Step 5



- Using the head of the screwdriver, flip up the black tab connecting the ribbon-wire.
- Gently pull the LCD screen away from the board, the cable should come off with nearly no resistance.

To reassemble your device, follow these instructions in reverse order.