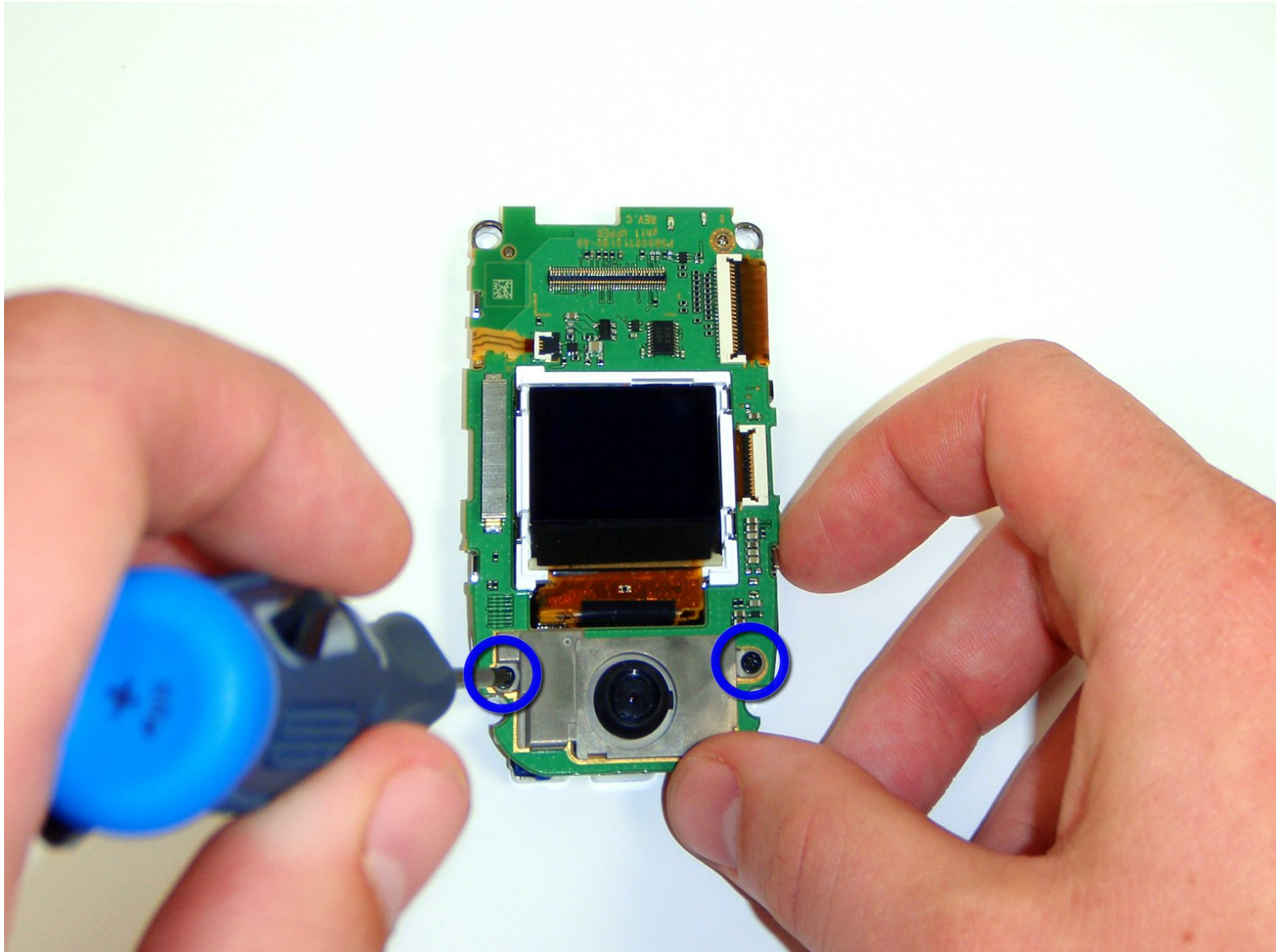




Toshiba A1304T Camera Replacement

Written By: Christopher



INTRODUCTION

Use this guide to replace the Toshiba A1304T camera.



TOOLS:

- [Flathead Screwdriver](#) (1)
- [T8 Torx Security Bit Screwdriver](#) (1)



PARTS:

- [Toshiba A1304T replacement camera](#) (1)

Step 1 — Back panel



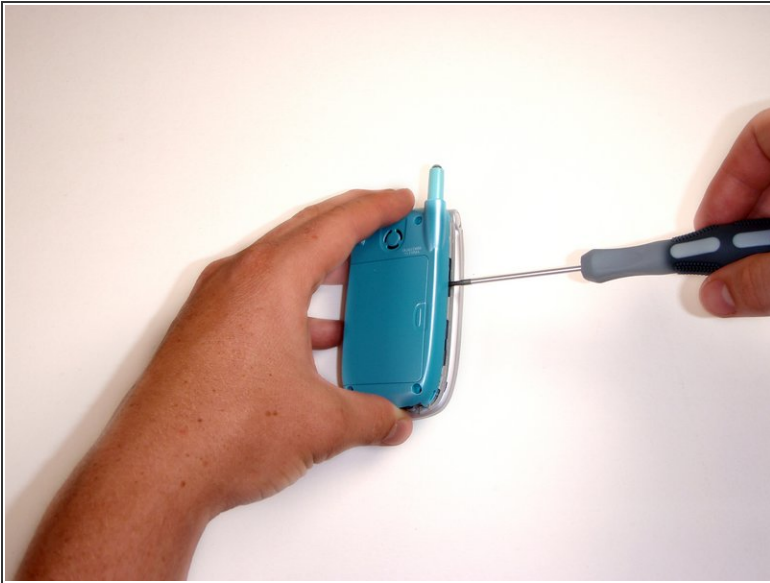
- Using a thumb-tack, push-pin, or similar pin, remove the four plastic stoppers located on the back panel.

Step 2



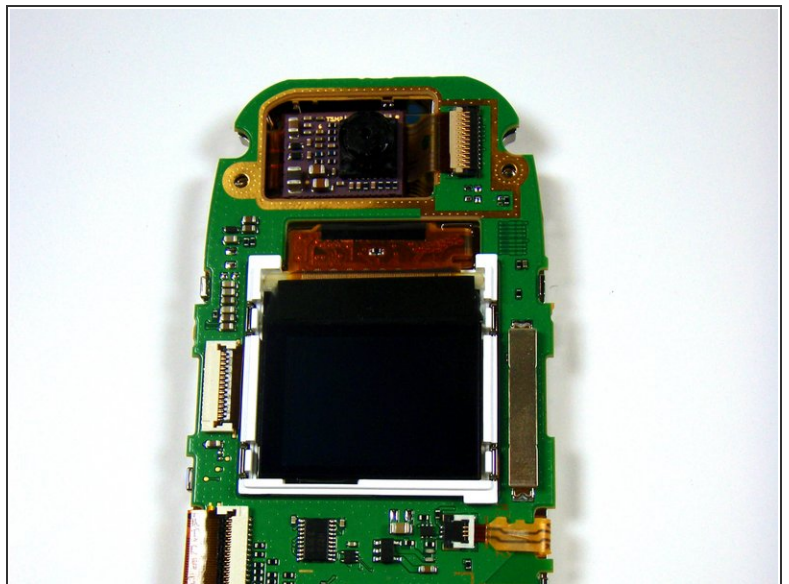
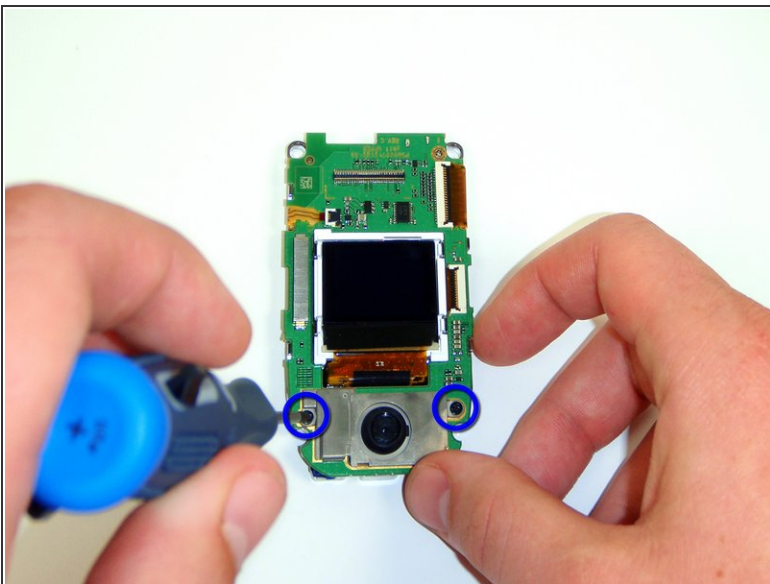
- With the T8 Torx Security Bit Screwdriver, remove the four screws in the designated locations.
- ⓘ The T8 Torx Security Bit Screwdriver can be substituted with a small flathead screwdriver. Screw removal may be slightly more difficult however.

Step 3



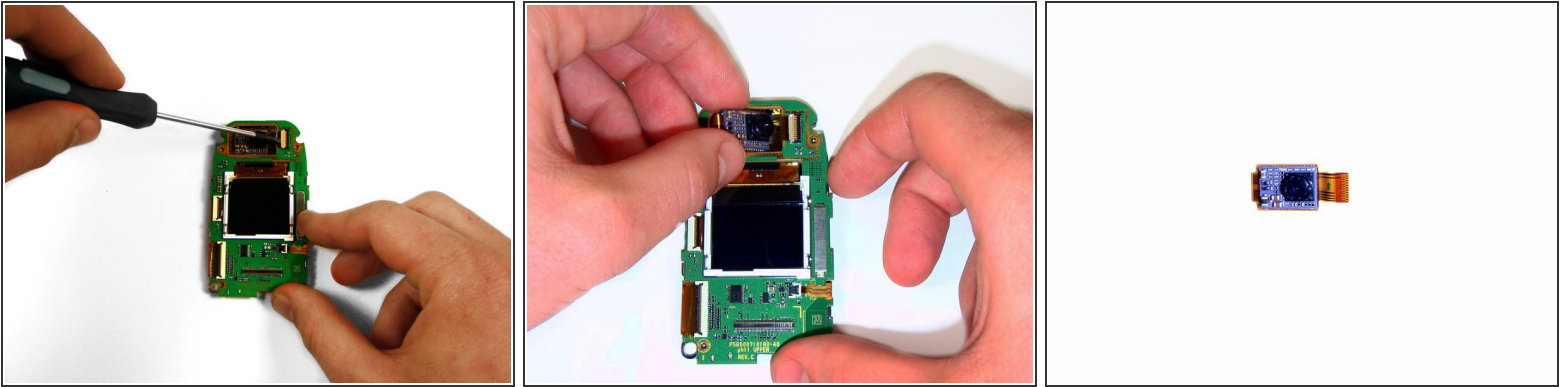
- If needed, use the flathead screwdriver to gently pry the panel from the phone.
- Using your fingers, lift the panel from the device.

Step 4 — Camera



- Using a small Phillips screwdriver, remove the two black screws from the positions indicated.
- Gently pull the silver plate from the phone using your fingers.

Step 5



- Using the head of a flathead screwdriver, flip the white segment of the socket that the camera's ribbon-wire runs into so that it is orientated vertically.
- Gently lift the camera from its cavity and pull it away from the socket using your thumb and forefinger.

To reassemble your device, follow these instructions in reverse order.