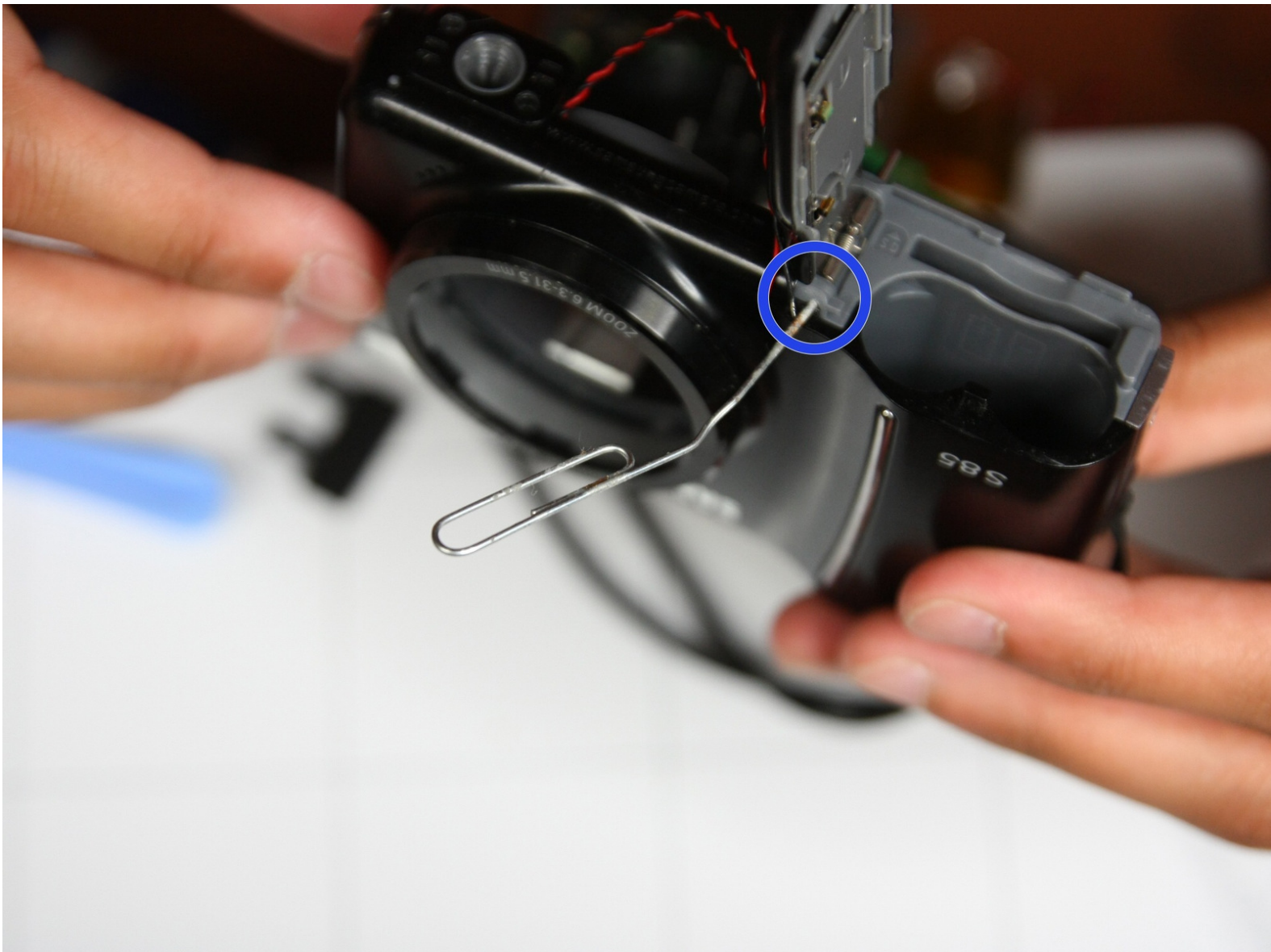




Samsung S85 Battery Door Replacement

How to replace the battery door

Written By: Avinash Salgam



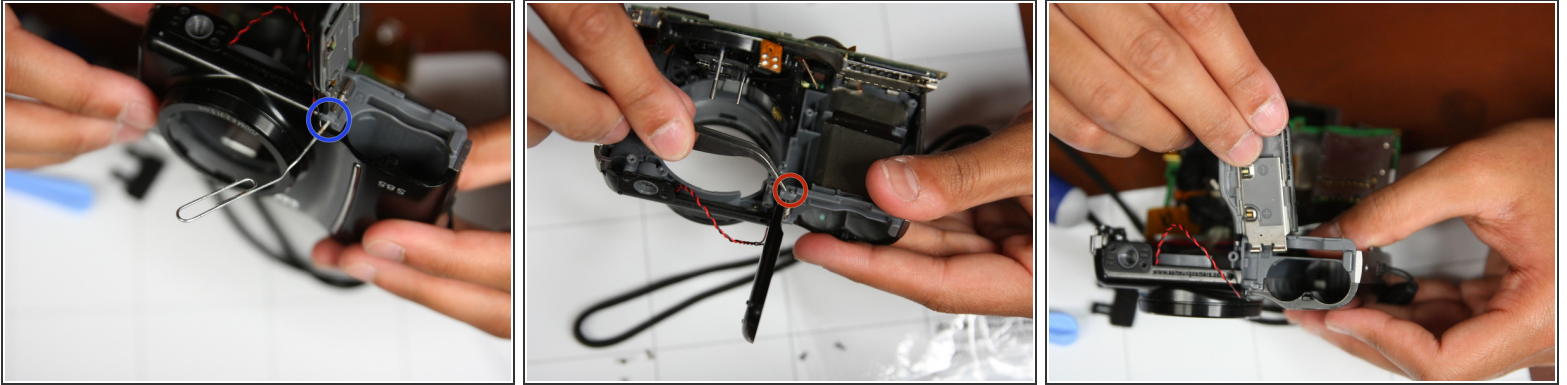
INTRODUCTION

This guide will show you how to disassemble and potentially replace the battery door.

TOOLS:

- [Paper Clip](#) (1)
-

Step 1 — Battery Door



- Rotate camera such that battery door is facing upwards. Open battery as if you normally would when changing batteries
 - Bend paperclip such that metal is now a thin rod
 - Align rod portion of paperclip with pin located at bottom of battery door. Gently push on pin with rod such that rod replaces pin underneath battery door as shown in first picture
- ⚠ Be careful with spring located with pin as this may fly off when being pushed out by paperclip.
- Using tweezers, gently pull pin out from opposite end of paperclip. When pin is fully removed, remove paper clip.
 - Battery door should now be fully removed from battery slot.

To reassemble your device, follow these instructions in reverse order.

This document was last generated on 2017-06-29 01:37:15 PM.