



CyberHome CH-DVD 300 Back Panel Replacement

Remove the back panel of your CyberHome CH-DVD 300.

Written By: Chris Menezes



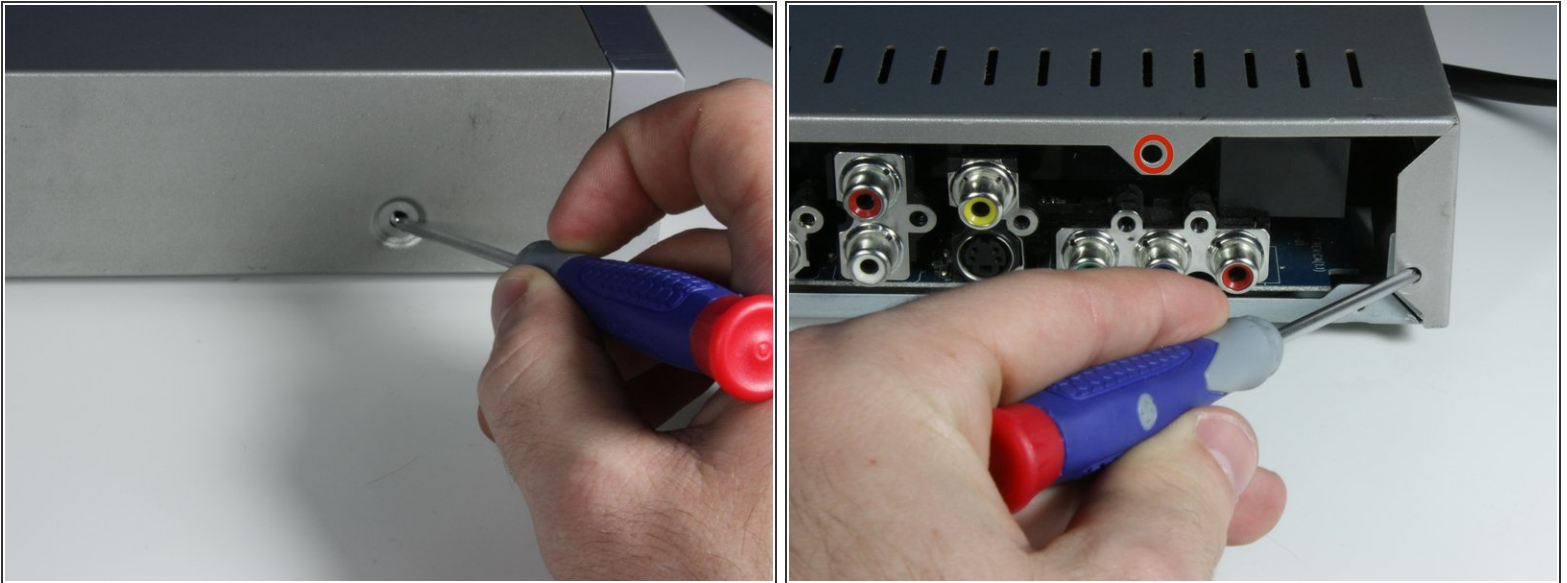
INTRODUCTION

Removing the back panel requires taking of the top panel first. Then, you must remove four more screws on the back.

TOOLS:

- [Phillips #0 Screwdriver](#) (1)
-

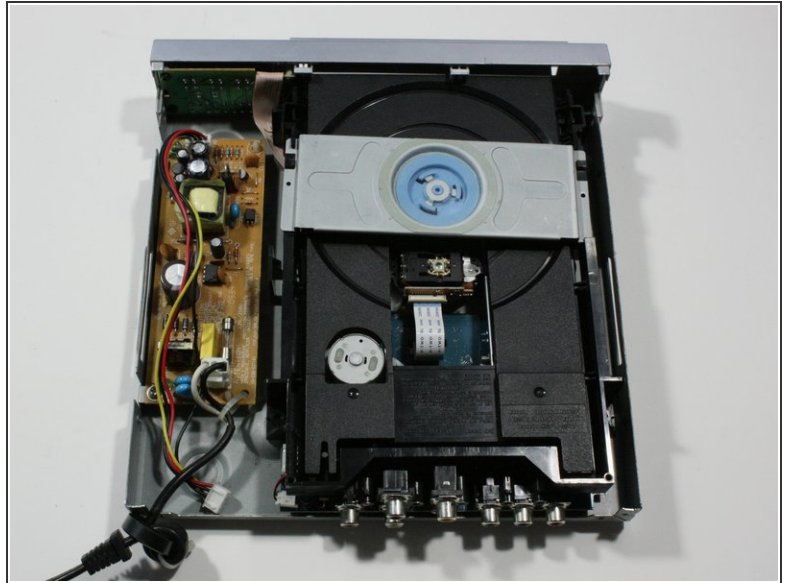
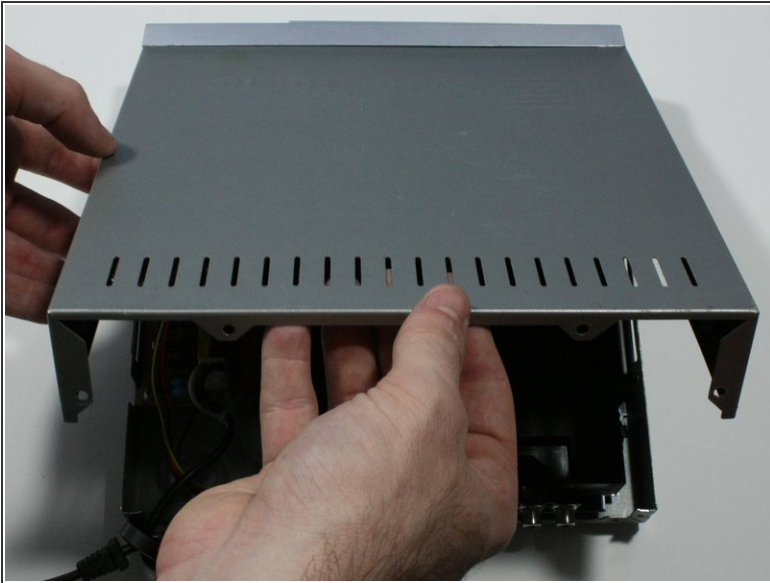
Step 1 — Top Panel



! Turn the DVD player off. Unplugging the DVD player while it is on may result in damage to the DVD player or an inserted CD.

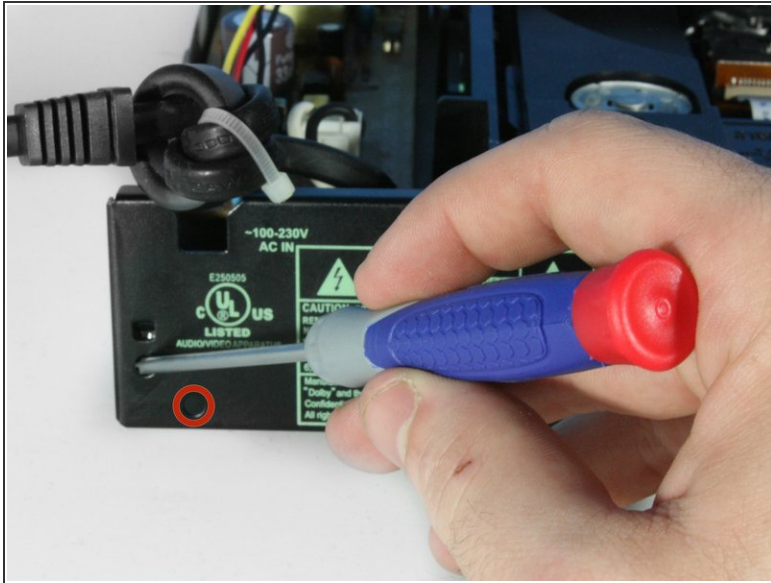
- Unplug the DVD player from the wall socket.
- Locate the 15mm Phillips screws on the left side (1 screw), right side (1 screw), and back (4 screws) of the DVD Player. Use the appropriate Phillips head screwdriver to remove the six screws.

Step 2



- Remove the top panel of the DVD Player by:
 - Sliding the top panel backwards.
 - Gently lifting the back of the top panel up.

Step 3 — Back Panel



- Remove the remaining screws on the back of the DVD player:
 - ⓘ There will be four 15 mm screws and two 6.3 mm screws.

Step 4



- Remove the back panel by:
 - Lifting up on the back panel.
 - Pulling the back panel backwards from the DVD player.

To reassemble your device, follow these instructions in reverse order.

This document was generated on 2019-09-18 03:13:07 PM (MST).

