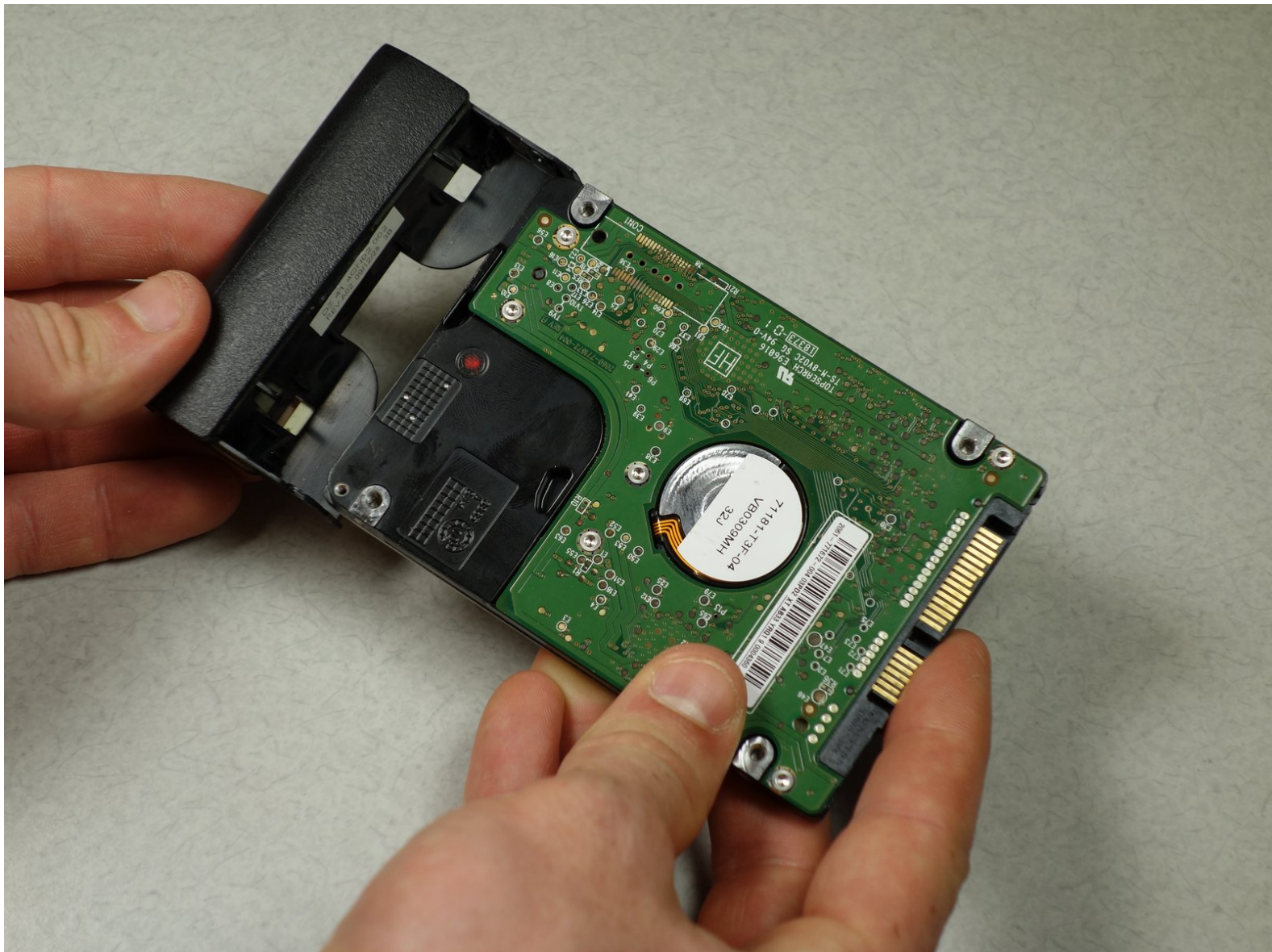




Dell Inspiron 1750 Hard Drive Replacement

This guide will show you how to replace the hard drive of your Inspiron 1750.

Written By: Tina Rickard



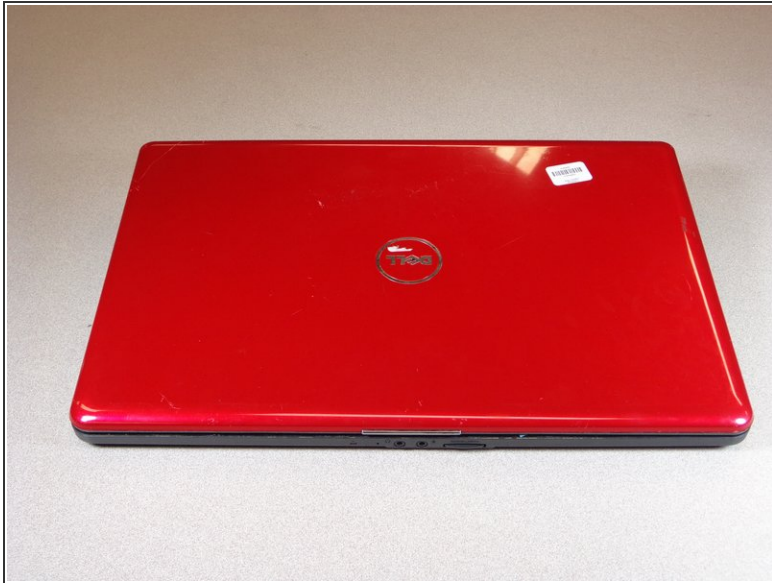
INTRODUCTION

You may want to remove the hard drive to upgrade to a higher capacity drive or if your files have become corrupted and unrecoverable.

TOOLS:

- [Phillips #00 Screwdriver](#) (1)
-

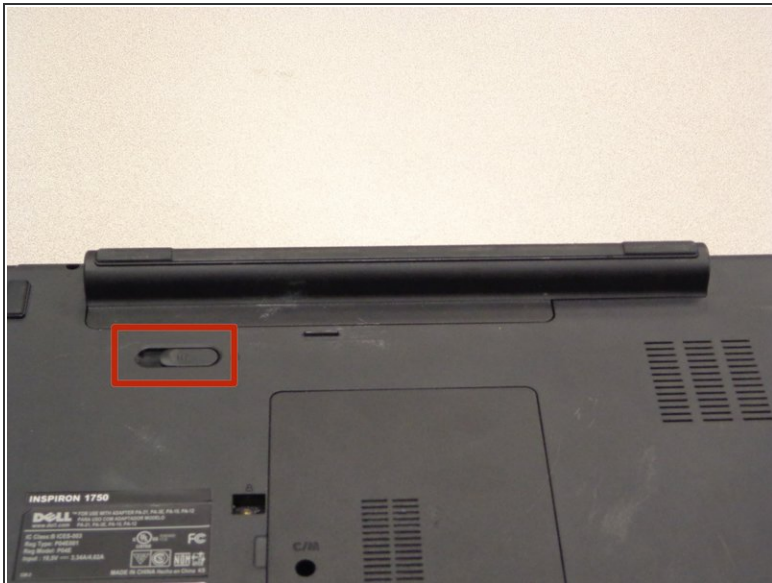
Step 1 — Battery



 Unplug the laptop before changing the battery to avoid electric shock.

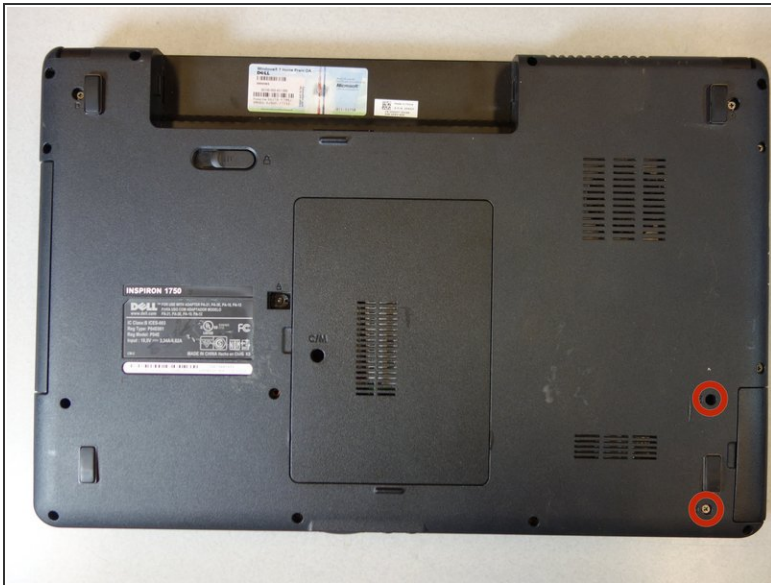
- Place the laptop on a flat stable surface.
- Flip the laptop over so the underside is visible.

Step 2



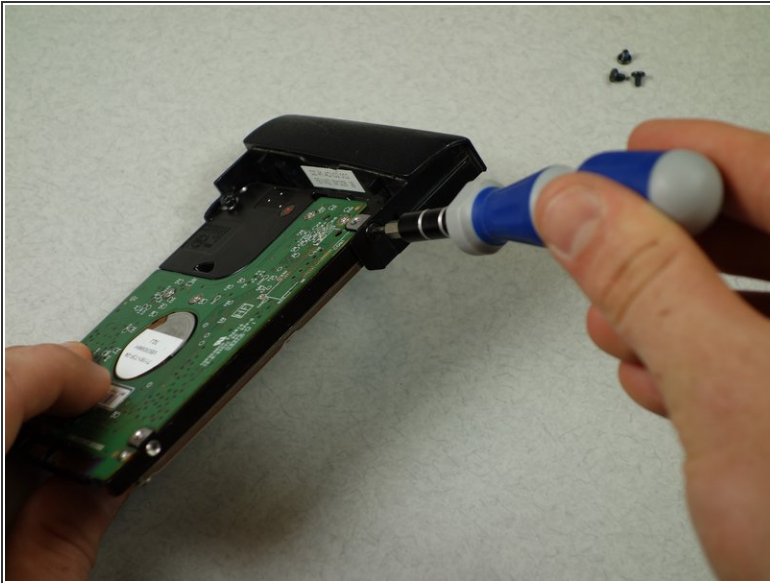
- Locate the battery lock switch.
- Slide the lock switch to the left (away from the lock symbol).
- Slide the battery out away from the laptop.

Step 3 — Hard Drive



- Remove the two 1mm double wide Phillips #00 screws.
- Pull the hard drive away from the laptop.

Step 4



- Keep all screws in a safe place. You may need to use them for your new hard drive.
- Remove the two #00 1mm screws on both sides of the hard drive.
- Pull the hard drive cover away from the hard drive and set the cover aside.

To reassemble your device, follow these instructions in reverse order.