



Gateway SA1 USB Replacement

This is a guide on replacing the USB port on the right side of the computer.

Written By: Shawn Cabral

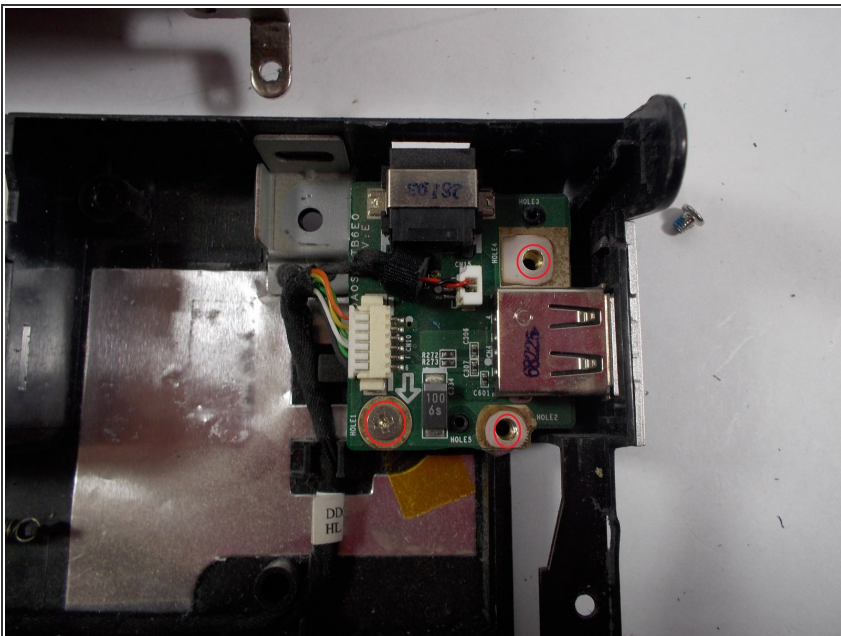


Step 1 — USB



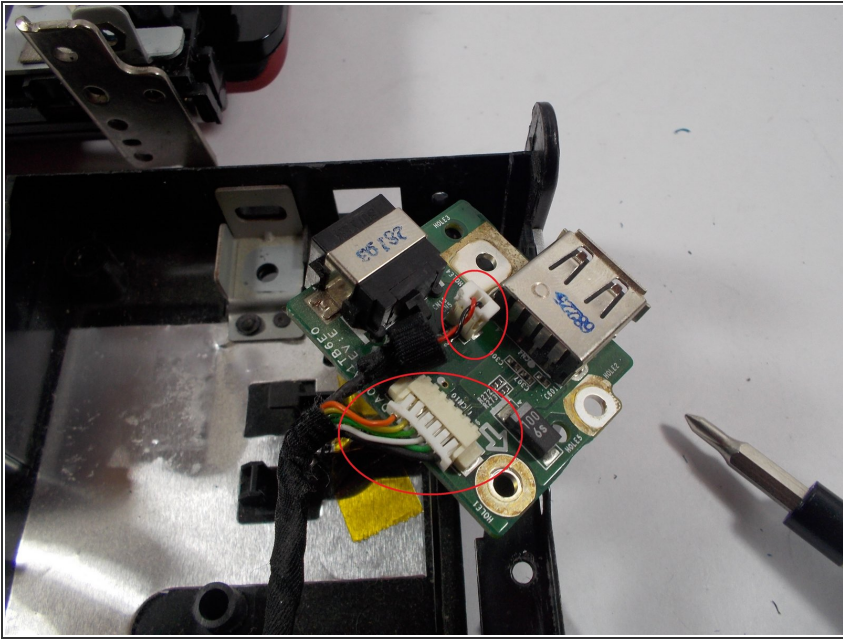
- Locate optional USB port on right side of inside computer, towards the screen.
- Notice: The outer casing must first be removed!

Step 2



- Remove screws from the three possible locations.

Step 3



- Remove the connections by pulling them directly outward from the female connector.
- Reattach connections to new USB port and screw it back in

To reassemble your device, follow these instructions in reverse order.

This document was last generated on 2019-07-10 07:37:15 PM.