



Gateway SA1 Speaker Replacement

This is a guide on how to replace broken or non-working speakers.

Written By: Shawn Cabral



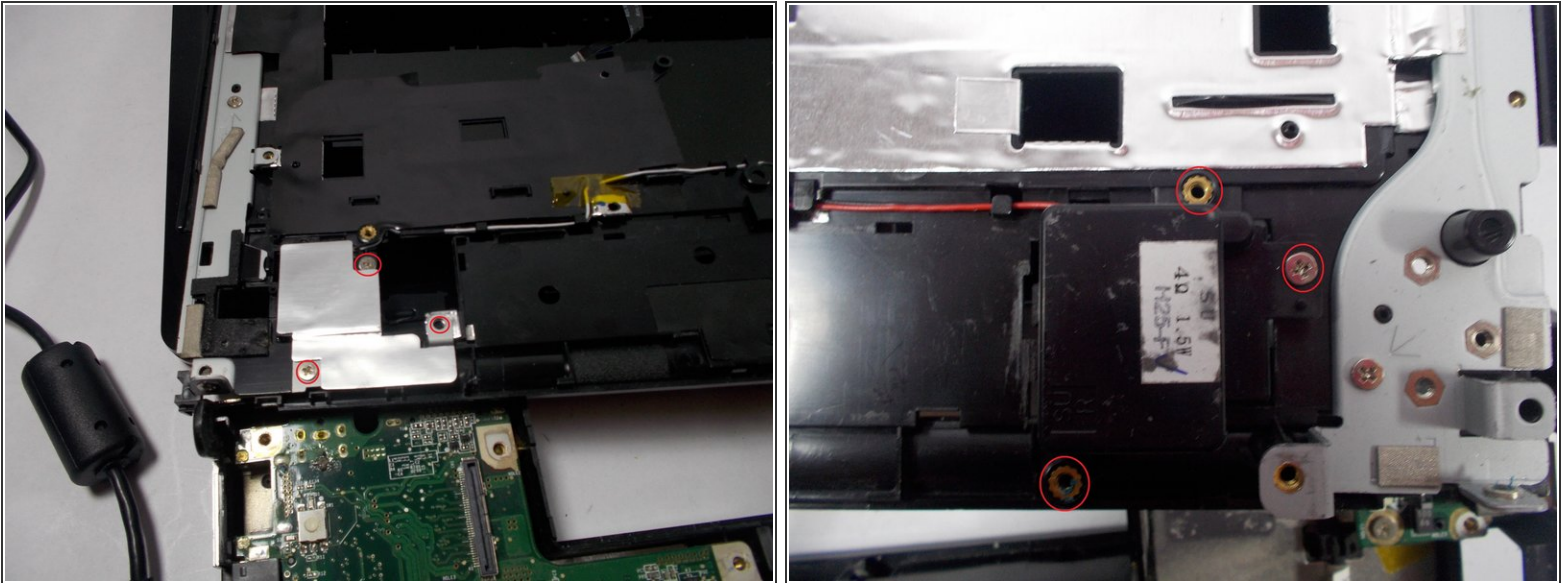
INTRODUCTION

Notice: The outer casing must first be removed.

TOOLS:

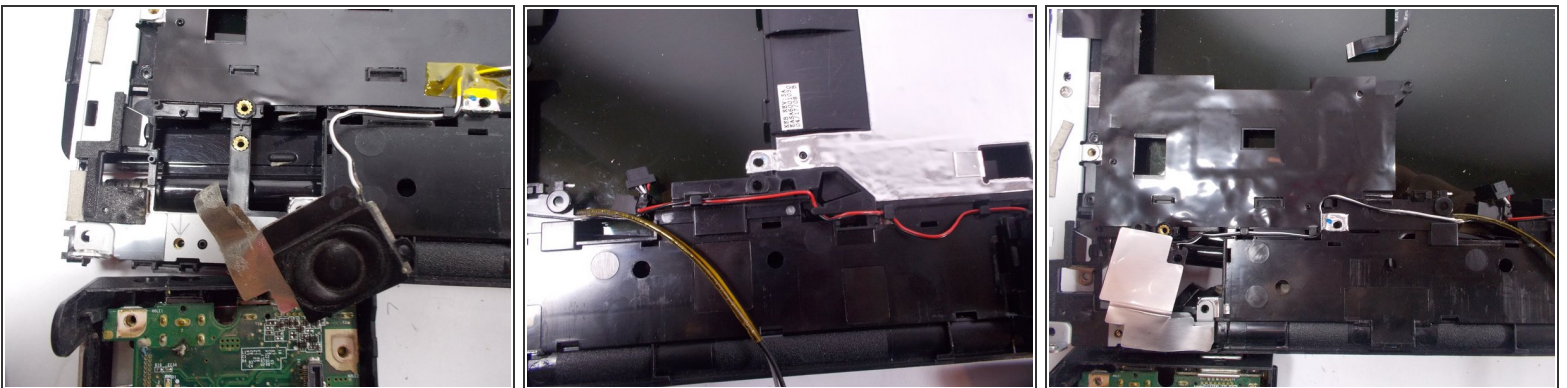
- [Pro Tech Toolkit](#) (1)
-

Step 1 — Speaker



- Locate speakers under the plastic casing usually covering the speakers
- Remove screws in the 7 possible locations.

Step 2



- Remove wires from their grooves in casing.

Step 3



- Re-insert wires on new speakers into grooves and screw them in.

To reassemble your device, follow these instructions in reverse order.