



# Samsung Galaxy S Blaze Power Button Replacement

Power buttons can be easily lost or broken during dis-assembly, this guide will illustrate a replacement.

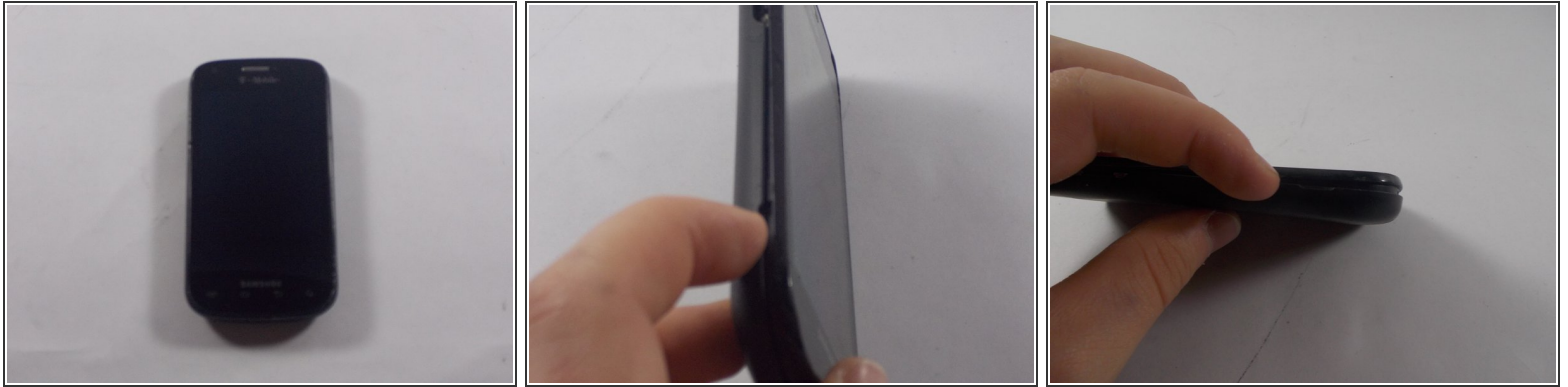
Written By: Dustin



 **TOOLS:**

- Phillips #00 Screwdriver (1)
-

## Step 1 — Power Button



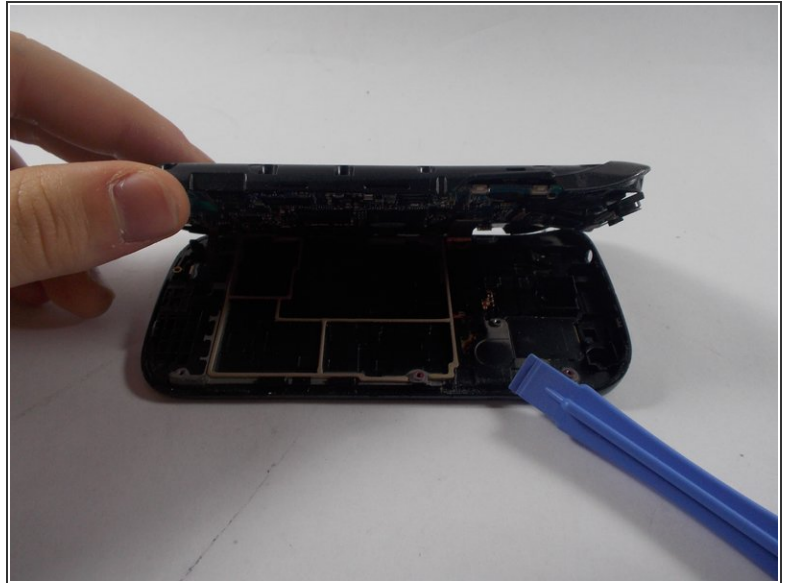
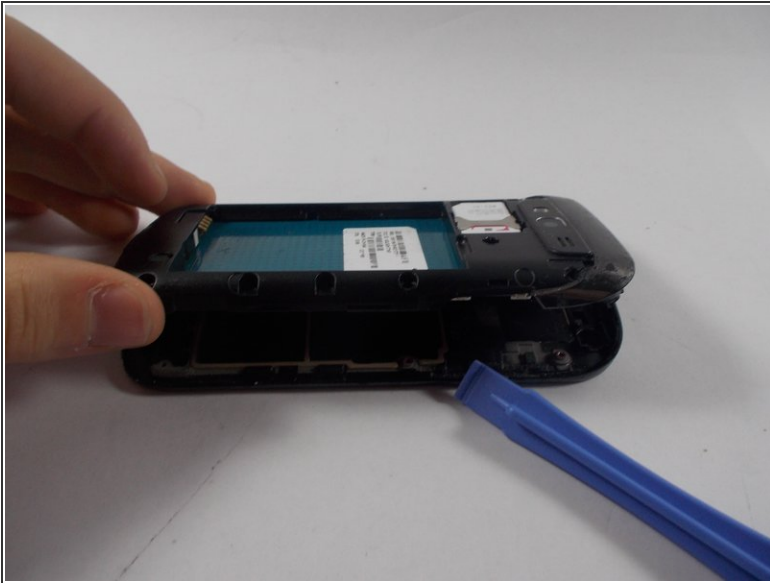
- Start by removing the back plastic cover by lifting it up from the notch on the left side of the phone

## Step 2



- Remove the battery and use a small Phillips head screwdriver to remove the marked up screws

### Step 3



- Use a flat tool to pry the two plastic cases apart
- The latches are very strong, so don't be afraid to use force

### Step 4



- Locate the missing button slot
- Place in replacement button, and close the plastic housing around it
- The button should be fully functional now, repeat past steps to reassemble the phone

To reassemble your device, follow these instructions in reverse order.

This document was last generated on 2019-07-10 11:50:40 PM.