



# TomTom ONE Battery Replacement

Written By: Trevor Foster



---

## INTRODUCTION

Batteries do not last forever, so this guide is to show you how to replace the battery.

---

### TOOLS:

- [Spudger](#) (1)
  - [T9 Torx Screwdriver](#) (1)
  - [Tweezers](#) (1)
-

## Step 1 — Battery



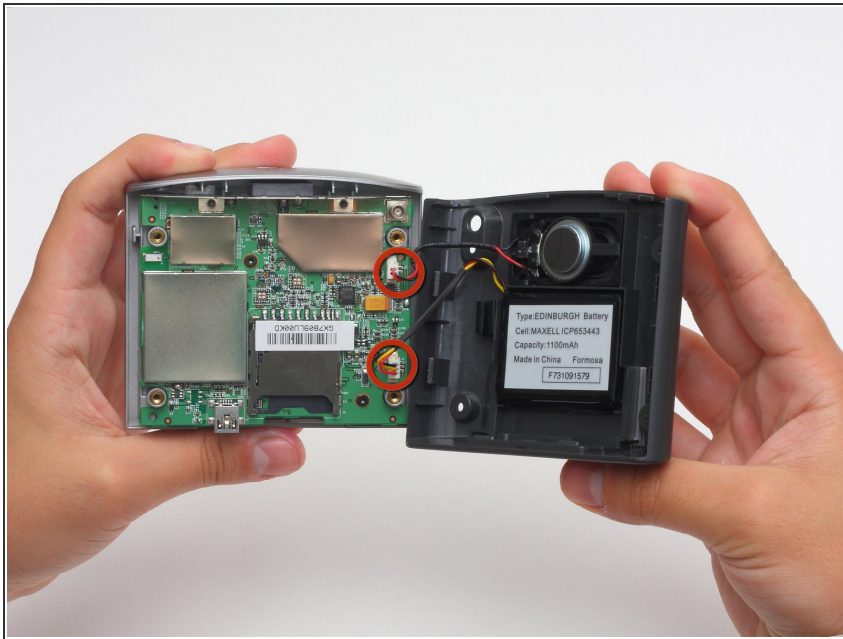
- Use a T-9 Torx screwdriver to unscrew the four screws on the back cover.

## Step 2



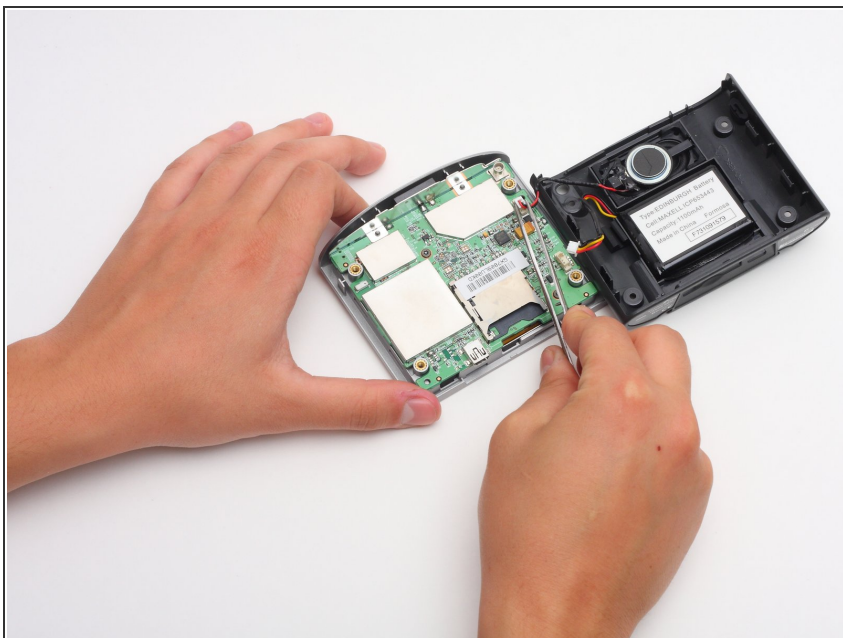
- Using a spudger, gently pry apart the back case from the front case. It is easier to start on a side and work your way around the device.

### Step 3



**⚠** Carefully pull the back cover apart from the front cover. Be careful not to pull too hard because there are two sets of wires connecting the device.

### Step 4



- Once the two covers are separated, use the tweezers, or even your fingers, to gently disconnect the two sets of wires that are connected to the motherboard from the back cover. You may have to wiggle the wires a little bit to get them to disconnect.

## Step 5



- Using the spudger, gently pry out the battery.
- ⓘ The battery may seem tough to get out due to the adhesive used to secure it. Just slowly work at it and do not force anything.

To reassemble your device, follow these instructions in reverse order.