



Samsung Gear 2 Camera Replacement

Use this repair guide to replace the camera in the Samsung Gear 2.

Written By: Allison Michel



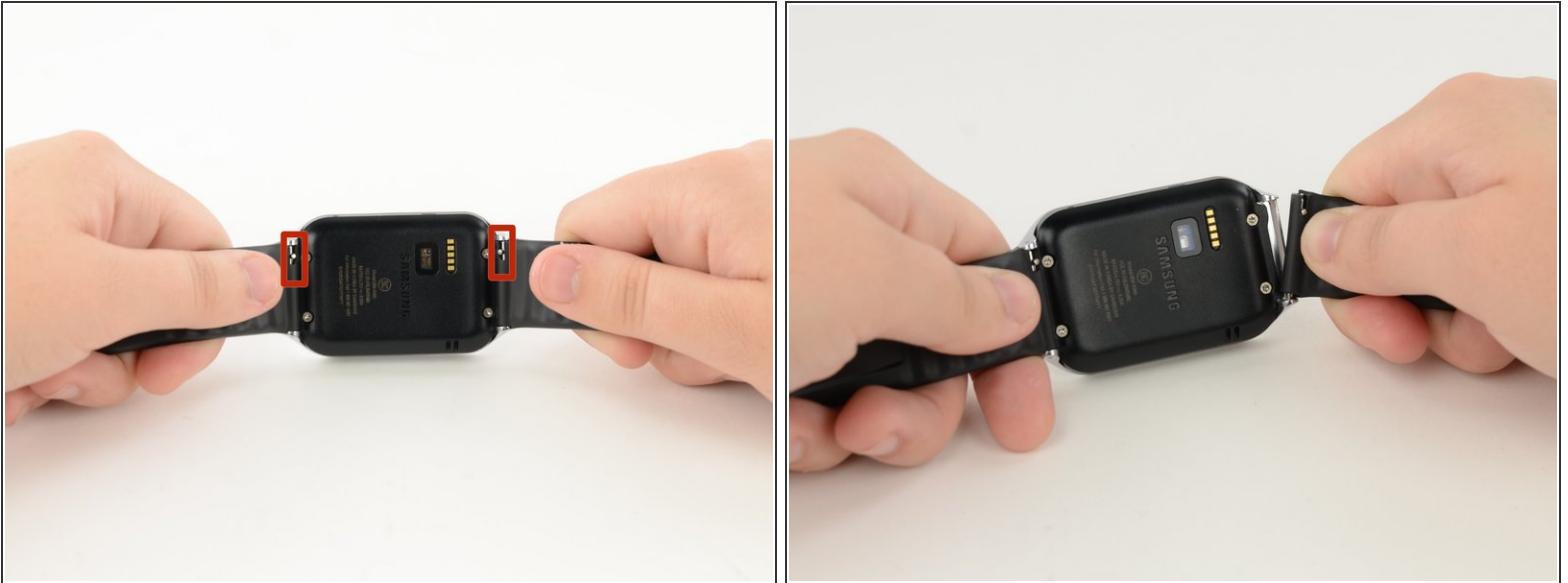
INTRODUCTION

This guide will walk you through the process of replacing a broken camera in a Samsung Gear 2.

TOOLS:

- [Spudger](#) (1)
 - [Tweezers](#) (1)
 - [T5 Torx Screwdriver](#) (1)
-

Step 1 — Front half and Back half



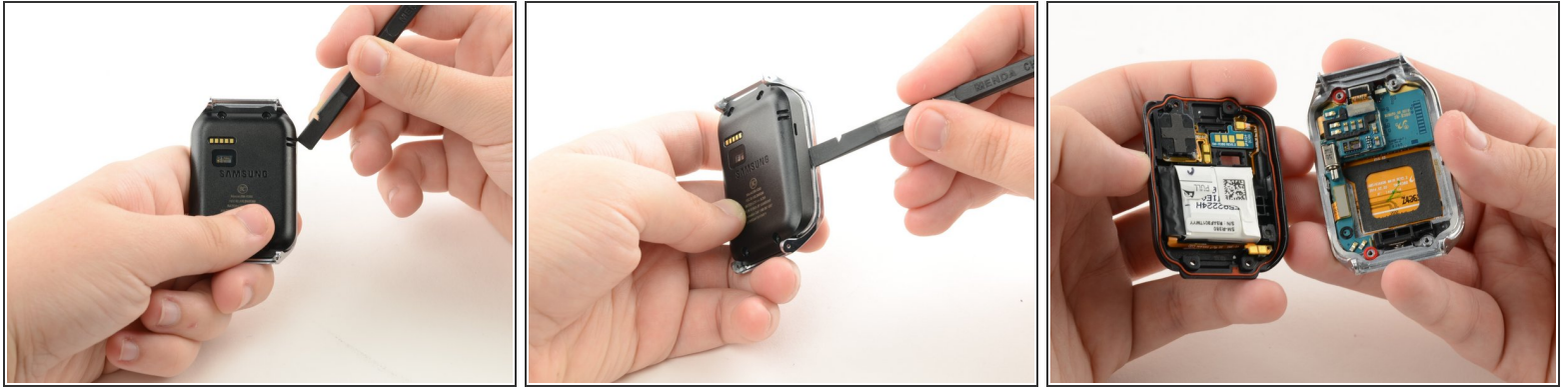
- Before disassembling your Gear, be sure it is powered off.
- To remove each strap, locate the metal latches on both sides of the back of the Gear.
- Press down on the metal latch while pulling the strap away from the Gear until it is completely off.

Step 2



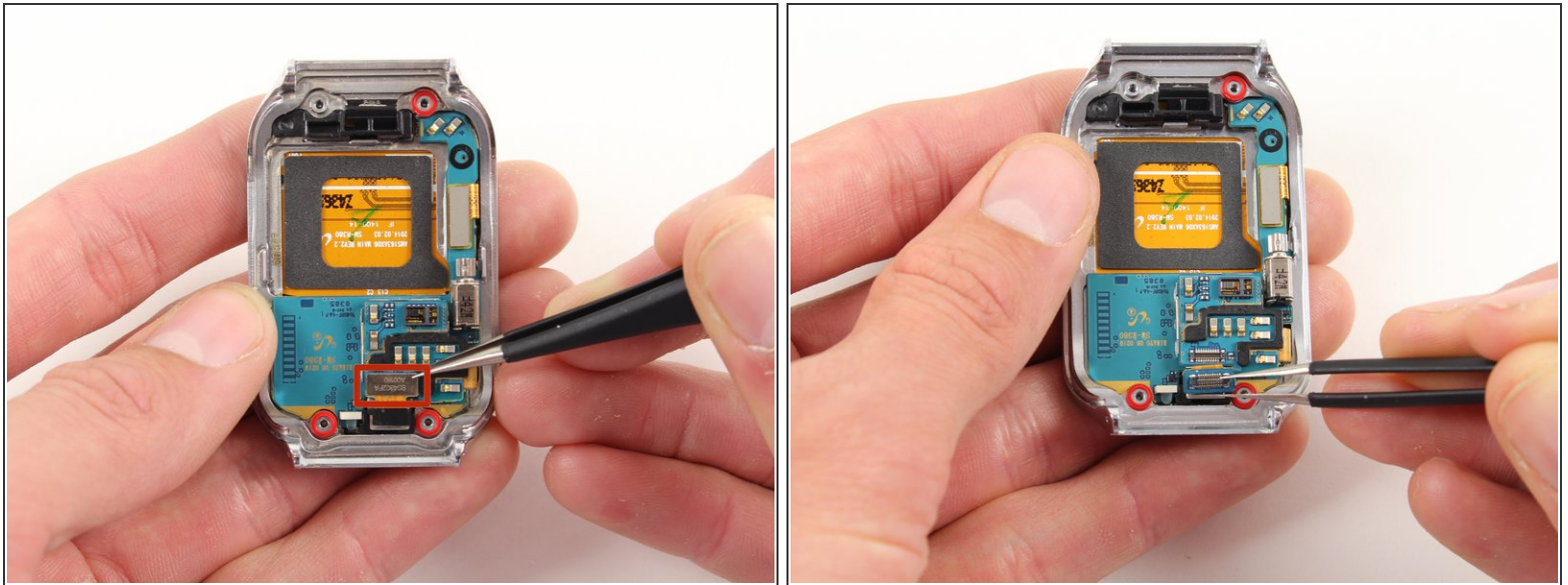
- Remove the four 4.0 mm screws on the back of the Gear using a T5 Torx Screwdriver.

Step 3



- Firmly holding the Gear, insert the flat side of the spudger at an angle to pry the back casing off of the device. Move the spudger along the sides of the Gear to completely detach the back and front components.
- Pry the device open from the other side also if it does not fully disassemble from one side.

Step 4 — Camera



- Locate the rectangular metal connector that attaches the camera to the Gear.
 - Use tweezers to gently lift and detach the metal plate of the connector.
- ☞ When reassembling the Gear, reattach the camera connector by carefully aligning the metal plate and its pins to its original placement. Make sure it snaps in place to avoid improper connections and possible damage.

Step 5



- Use tweezers to carefully lift the camera from its slot out of the case.

To reassemble your device, follow these instructions in reverse order.