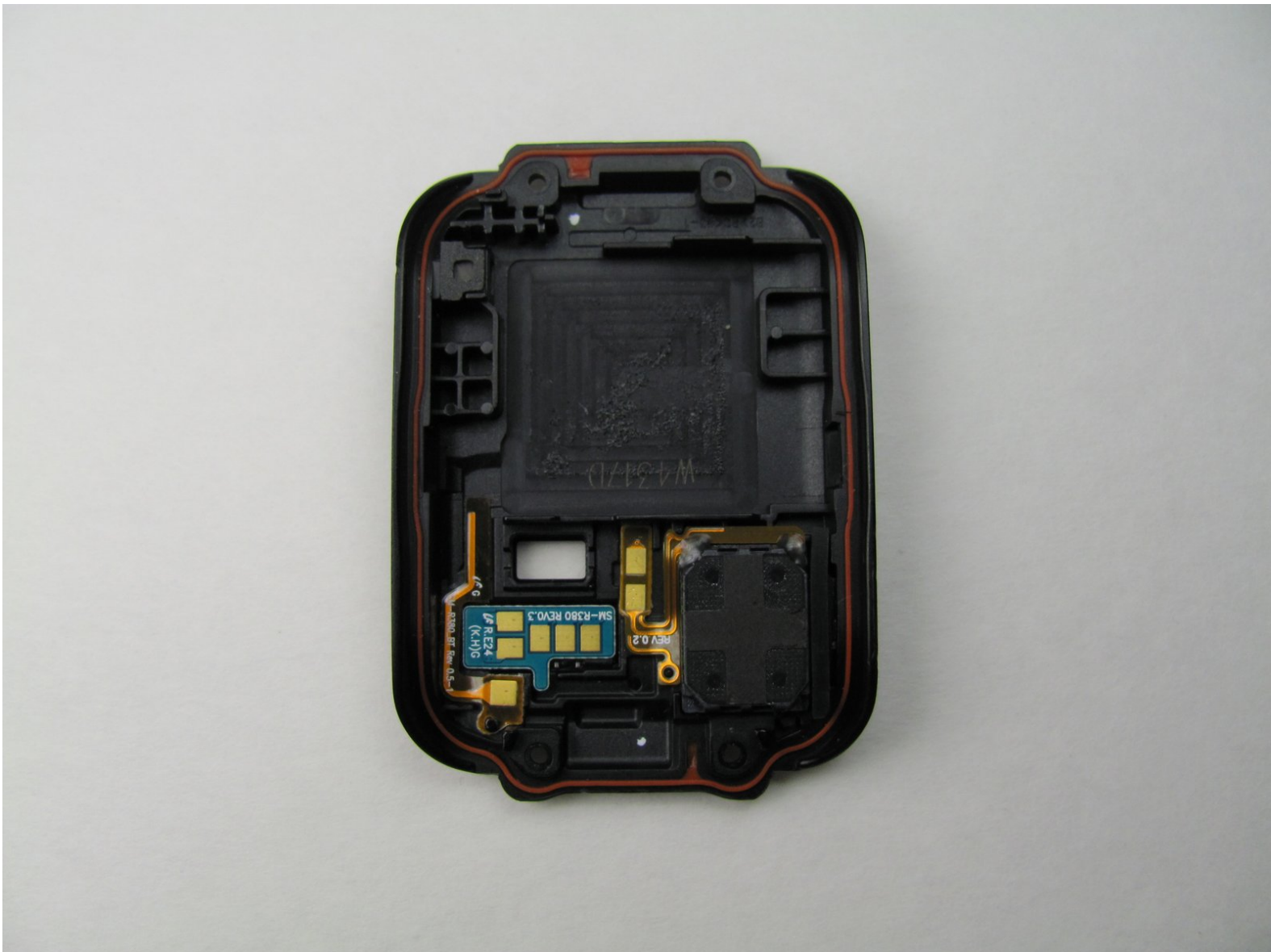




# Samsung Gear 2 Speaker Replacement

Use this repair guide to replace the speaker in the Samsung Gear 2.

Written By: Devin Mast



---

## INTRODUCTION

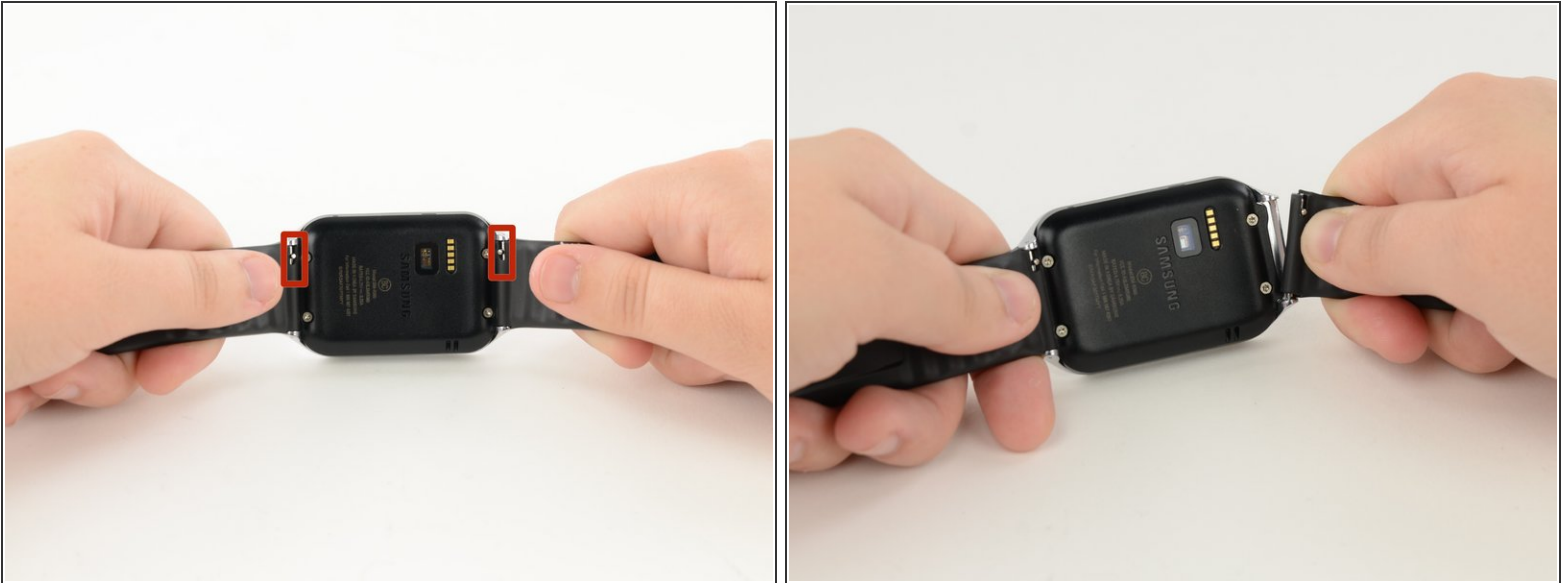
This guide will walk you through the process of replacing a broken or defective speaker in a Samsung Gear 2.

---

### TOOLS:

- [Tweezers](#) (1)
  - [Spudger](#) (1)
  - [T5 Torx Screwdriver](#) (1)
-

## Step 1 — Front half and Back half



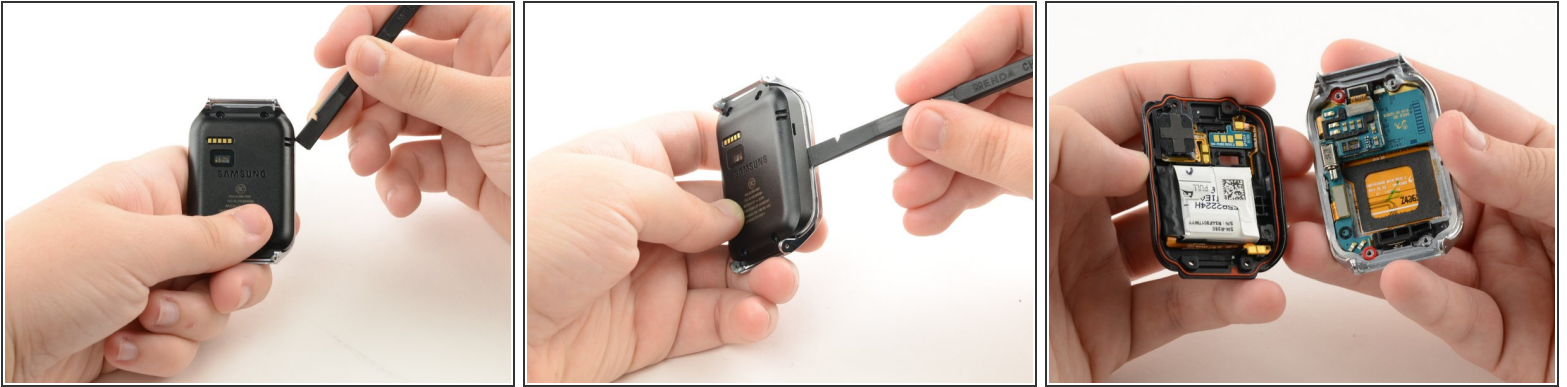
- ✎ Before disassembling your Gear, be sure it is powered off.
- To remove each strap, locate the metal latches on both sides of the back of the Gear.
- Press down on the metal latch while pulling the strap away from the Gear until it is completely off.

## Step 2



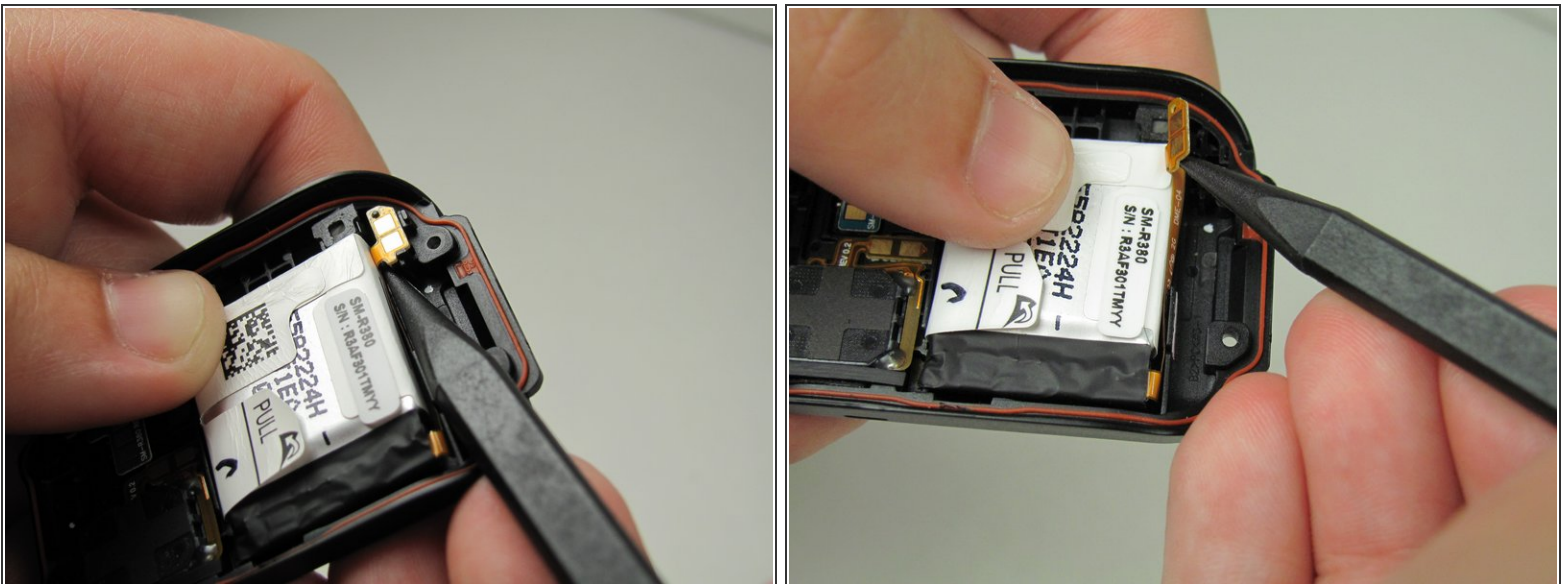
- Remove the four 4.0 mm screws on the back of the Gear using a T5 Torx Screwdriver.

### Step 3

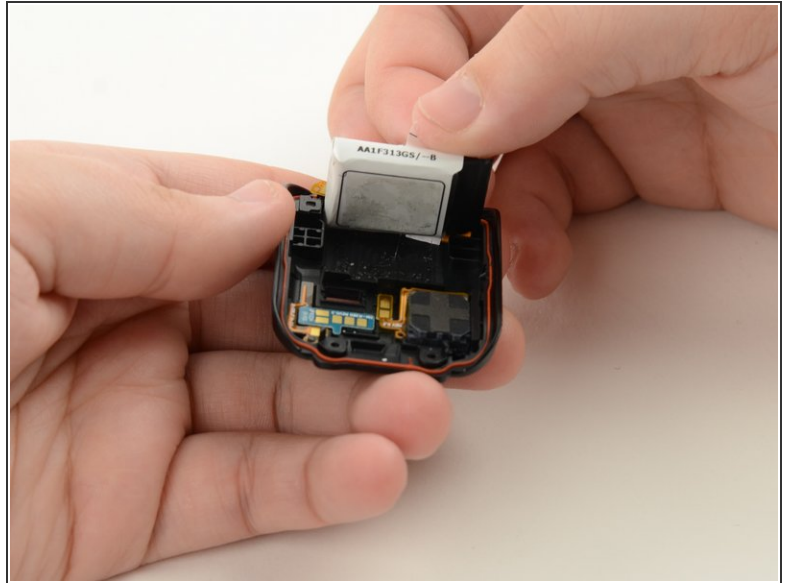
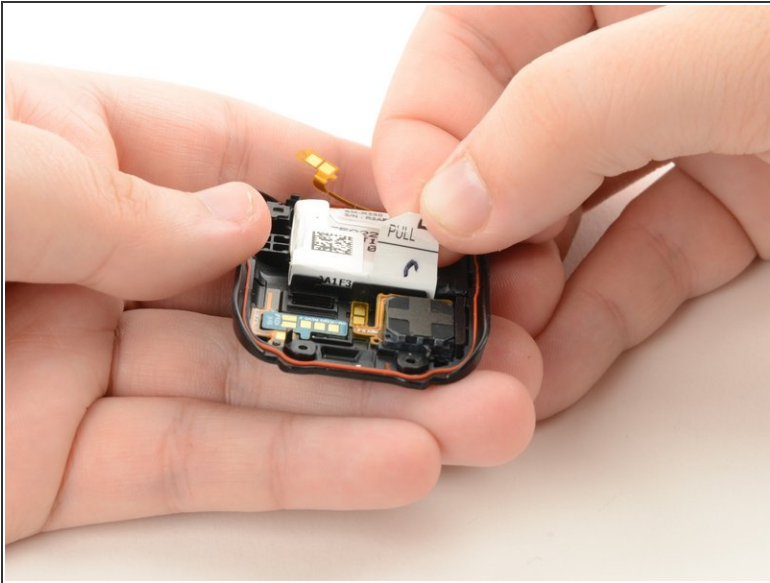


- Firmly holding the Gear, insert the flat side of the spudger at an angle to pry the back casing off of the device. Move the spudger along the sides of the Gear to completely detach the back and front components.
- Pry the device open from the other side also if it does not fully disassemble from one side.

### Step 4 — Battery



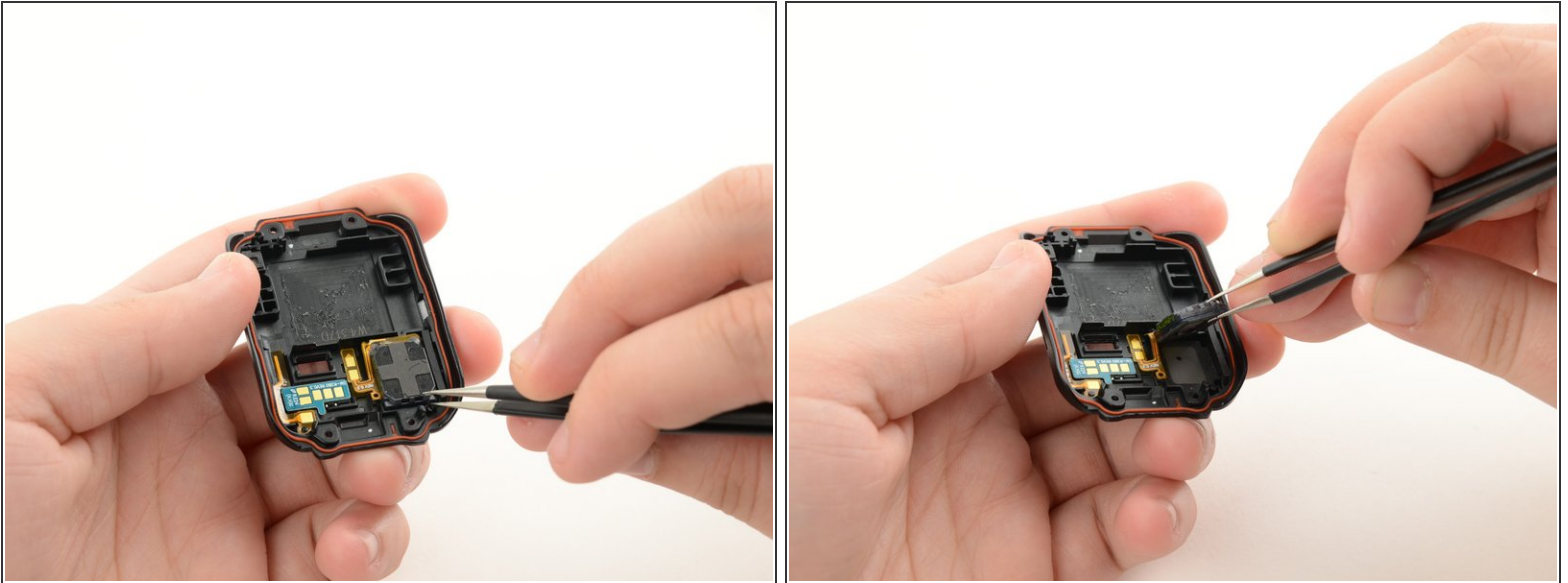
- Use the pointed side of the spudger to remove the small, orange battery cable.

**Step 5**


- Remove the battery by pulling the white tab on the battery marked "PULL."

⚠ Make sure the orange battery cable is fully disconnected to avoid ripping it off and tearing it.

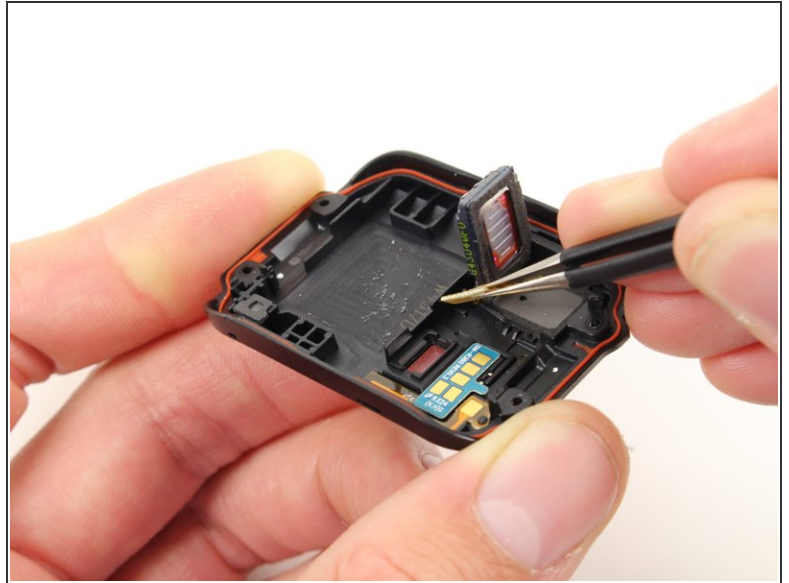
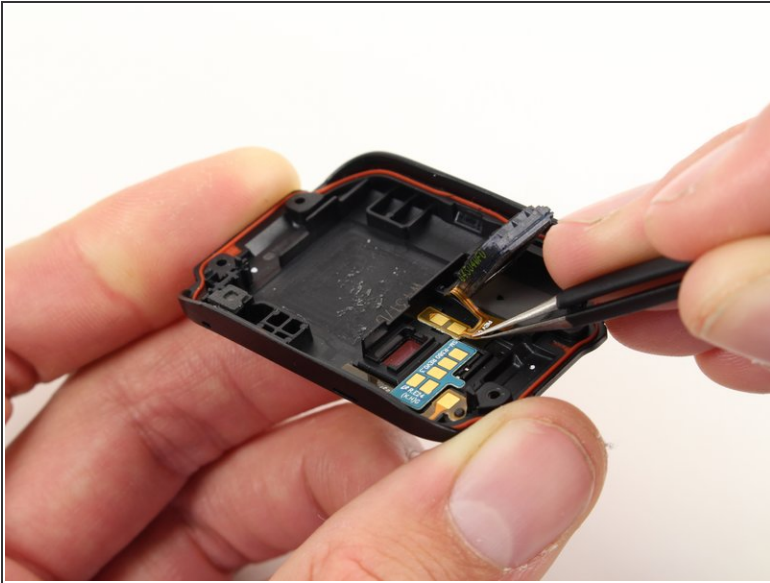
## Step 6 — Speaker



- Using tweezers, lift the rectangular speaker from the case.

 Be careful to not pull too quickly and rip the orange connector cable, which is attached to the case with adhesive.

## Step 7



- Use tweezers to carefully grab the connector.
- Gently pull upwards to detach it from the case and from the adhesive.

To reassemble your device, follow these instructions in reverse order.