



2005 Honda Accord Opening Hood Guide

A tutorial will show you how to safely open the hood of your car, so you may operate on the engine.

Written By: Matt Ondriezek



INTRODUCTION

Your hood stays closed while driving thanks to two latches. One of the latches is activated by a lever inside your car, and the other is activated by pulling a lever on the front of your hood. Both latches must be activated in order to open the hood.

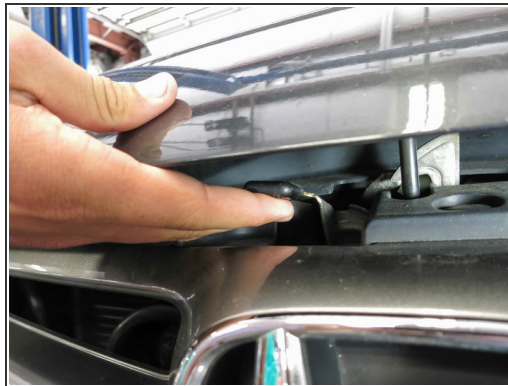
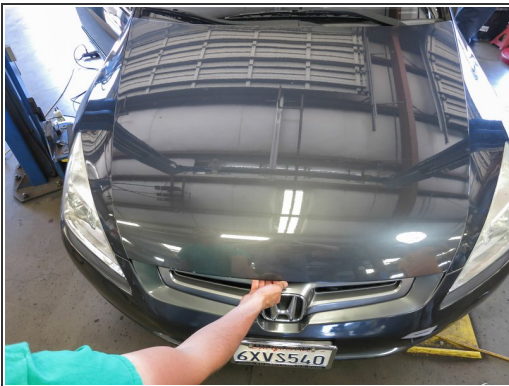
Pneumatic braces are used to hold your hood open while you work on your engine. These braces are only effective for a certain range of motion and are designed to only hold the weight of your hood. Proper use insures your safety.

Step 1 — 2005 Honda Accord Opening Hood Guide




- Identify the open hood latch. It is located to the left of your brake pedal.
- Pull latch toward you. You should hear a click from the front of the car.

Step 2



- Walk to the front of the car.
- Slide your hand under the hood, just above the Honda logo. Feel for a small rectangular lever. Pull the lever up, and lift the hood.

 Be sure to lift the hood all the way up, until the pneumatic braces hold the hood in place.

To close hood, lower to 6 inches above engine, then drop hood. If you do not hear the latch reengage, push down on hood or try dropping hood from a higher level.

This document was last generated on 2019-07-15 11:54:37 AM.