



# Disassembling HP Pavilion g7-2275dx Back Panel

This guide will teach you how to get to take off the back panel in order to get to the RAM, hard drive, wireless card, and more.

Written By: John Sutton



---

## INTRODUCTION

In order to replace the RAM, hard drive, or wireless card in the laptop you must first remove the back panel, as shown in this guide.

---

### TOOLS:

- [Phillips #1 Screwdriver](#) (1)
-

## Step 1 — Battery



**⚠** Working on your device while it is turned on may result in electric shock. Make sure to shut down and unplug your device before you begin.

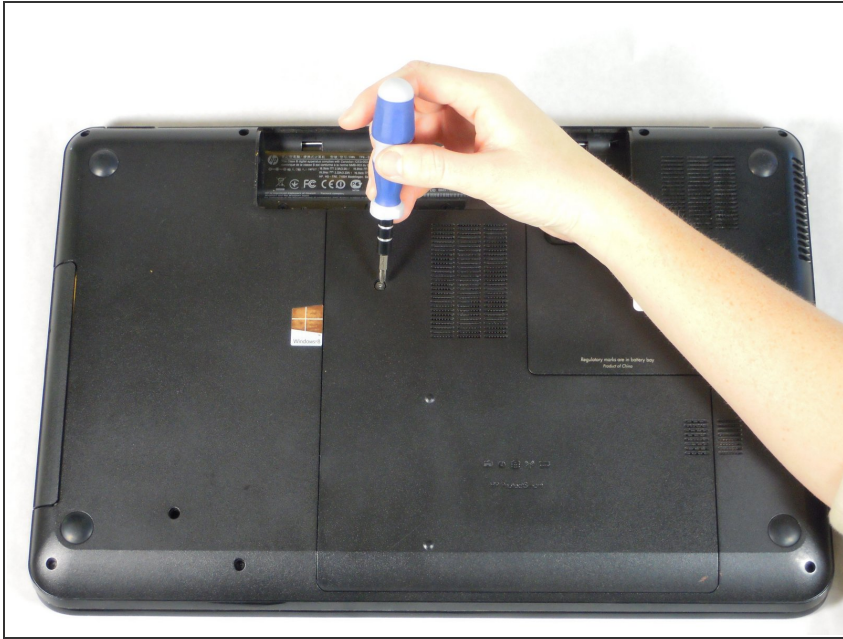
- Flip your device over so the bottom panel is facing up.

## Step 2



- The battery is held in by a latch in the front and tabs in the back.
- Slide the lock switch left, towards the center of the computer.
- Lift up the battery, rotating it up and away from you, then pull it out.
- ☑ To put the battery back in, line it up with the battery bay and the holes for the tabs. Then let the battery rotate towards you and press down until the latch engages and you hear a click.

### Step 3 — Disassembling HP Pavilion g7-2275dx Back Panel



- Unscrew one Phillips #1 screw from the back panel.
- ⓘ The screw is on a spring and attached to the panel. It will pop up, but will not separate from the back panel.

### Step 4



- Slide the back panel down and pull it up.

To reassemble your device, follow these instructions in reverse order.