



LeapFrog LeapPad2 Explorer Battery Replacement

Replace the battery in your LeapFrog LeapPad2 Explorer.

Written By: Nupur Garg



INTRODUCTION

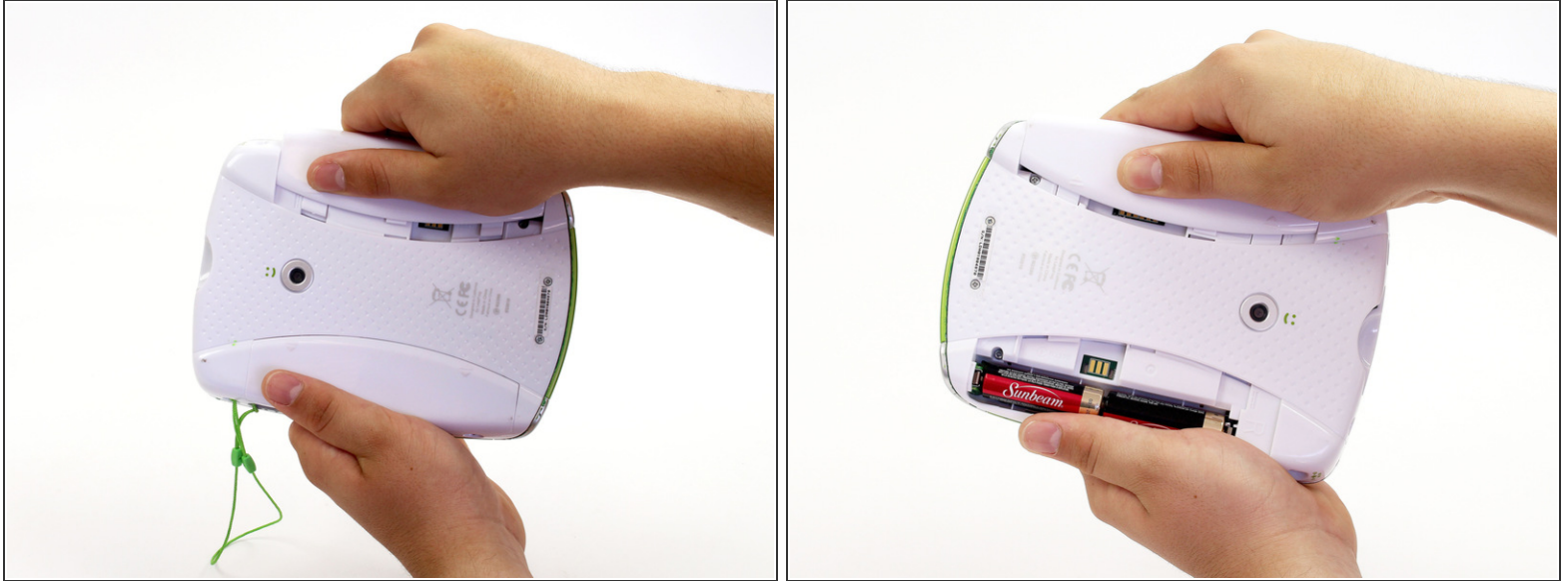
Be in charge of your situation, use this guide to replace the battery.



PARTS:

- [4 AA Alkaline Batteries](#) (1)
-

Step 1 — Battery



- Before disassembling your LeapPad, ensure your device is shut off.
- Push outward on the plastic side panels to remove and reveal battery.
- The panels should detach fully from the main device.

Step 2



- Push down from the positive end of the battery towards the negative end to pry the battery up out of its dispenser.
- Remove all four AA alkaline batteries from the device.

To reassemble your device, follow these instructions in reverse order.

