



Samsung Galaxy Tab 3 7.0 Battery Replacement

Replace a faulty or dead battery in your tablet.

Written By: Ian Leonard



INTRODUCTION

The battery is usually the first part removed, even if it is not the problem, it makes other components in the device more accessible.

TOOLS:

- [Flathead 3/32" or 2.5 mm Screwdriver](#) (1)
- [Spudger](#) (1)

PARTS:

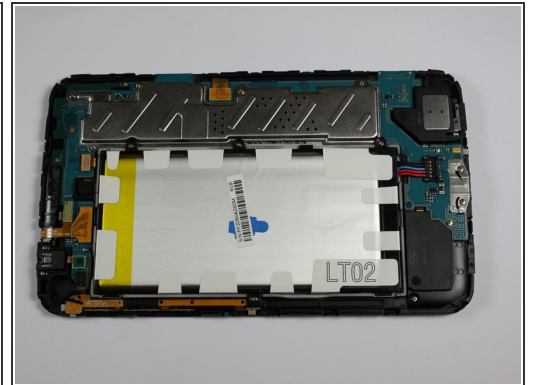
- [Galaxy Tab 3 7.0 Wi-Fi Battery](#) (1)
- [Galaxy Tab 3 7.0 Rear Case](#) (1)

Step 1 — Battery



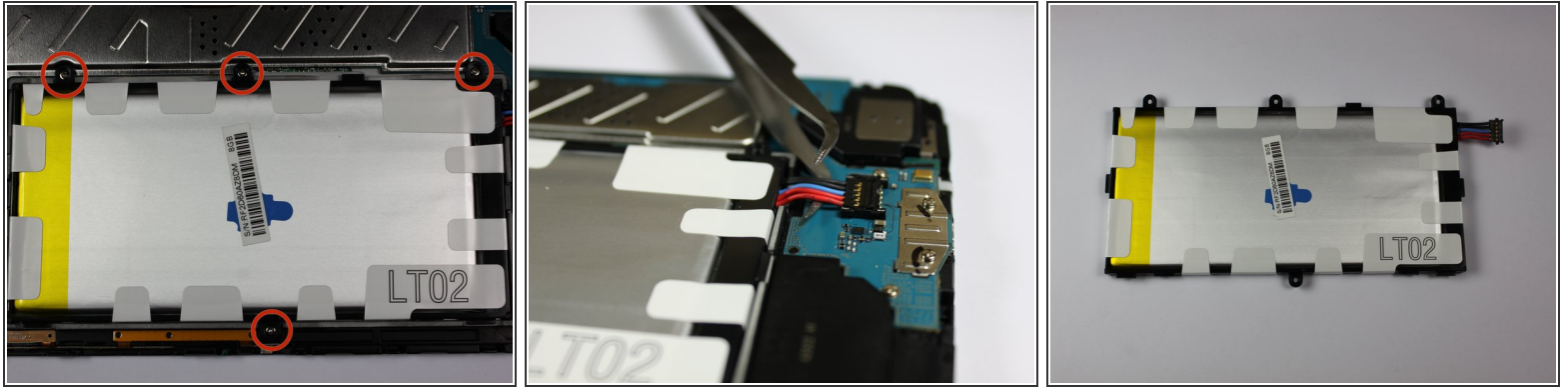
- With a plastic opening tool, gently insert the prying end in between the glass digitizer and the silver frame from the front of the device.

Step 2



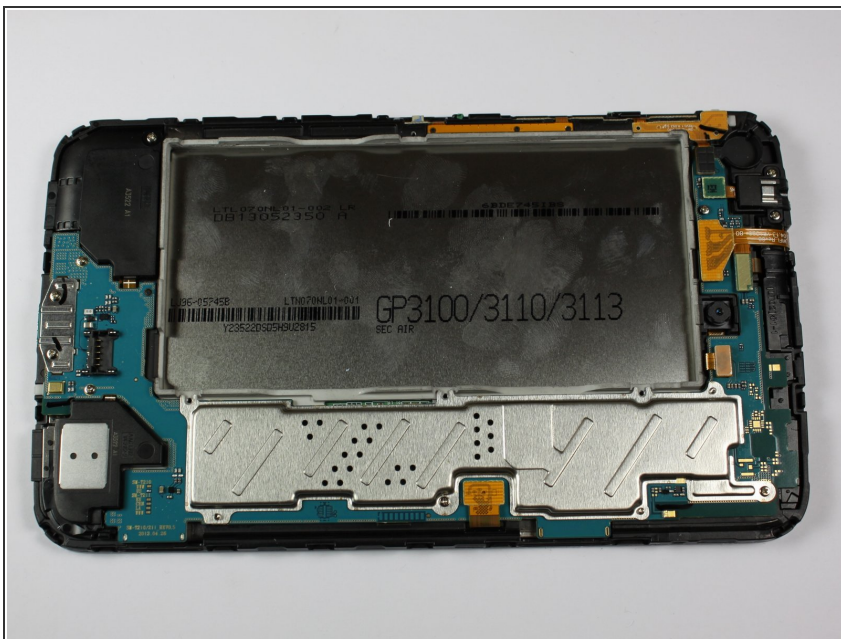
- Working slowly and carefully, move around the entirety of the face of the device. Small plastic clips should release, if not, apply gentle outwards pressure until you hear the clips popping off.

Step 3



- To begin actual removal of the battery itself, remove the four designated screws with your screwdriver.
- Once the screws are removed, use either the tip of your screwdriver or a pair of tweezers to pull up the battery connector. Pull directly up and the connector should pop out.
- Once the battery is removed, it should look as it does in the third picture.

Step 4



- To finish battery replacement, place your new battery where the old battery was in your device, as shown in the picture.

To reassemble your device, follow these instructions in reverse order.