



Lenovo IdeaTab A2109 Battery Replacement

Replace the battery in your Lenovo IdeaTab A2109.

Written By: Kyle



INTRODUCTION

Use this guide to replace the battery.

TOOLS:

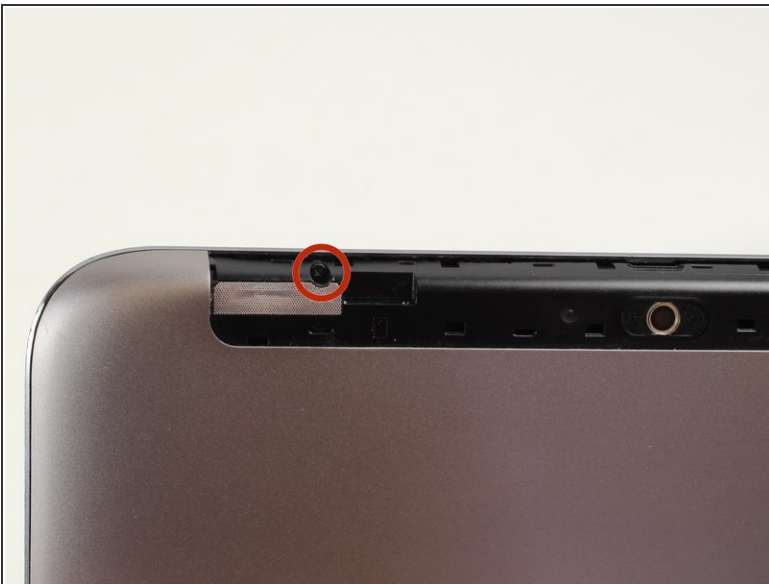
- [iFixit Opening Tools](#) (1)
 - [Phillips #00 Screwdriver](#) (1)
 - [Tweezers](#) (1)
-


Step 1 — Battery



- Look at the back of the tablet and locate the speakers on top of the rear cover.
- There is a smaller indentation in the plastic cover that runs across the top of the device.
- Wedge the plastic opening tool, under the middle of the cover as shown, then push up and the cover will pop off.

Step 2



 Remove SD card if present.

- Remove the following two screws:
 - M3.0 x 3.0 mm #00 phillips screws (black)

Step 3



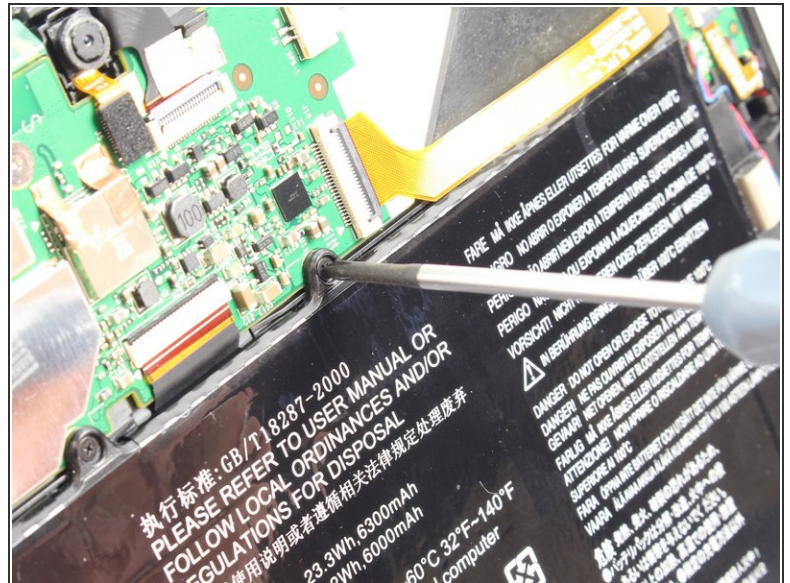
- Pry open cover using a plastic opening tool.
- Leave plastic opening tool in place to maintain the separation.
- It may take a little force to separate from the front face of the device
- Slide the plastic opening tool to one corner.
- Place another plastic opening tool into the gap and slide it to the opposite corner.
- Pull the rear cover up and back to separate it from front face of the device.

Step 4



- Disconnect battery power connector by pinching the connector with tweezers, and sliding it out of the housing.

Step 5



- Remove the following seven screws:
 - M3.0 x 3.0 mm #00 phillips screws (black).
- ④ The top right corner screw is underneath a yellow ribbon. Lift the ribbon up without disconnecting it and unscrew the screw.

Step 6



- Now you can take the battery out in order to either replace it or continue disassembling the device.

To reassemble your device, follow these instructions in reverse order.

This document was last generated on 2019-07-15 09:15:03 PM.