



Blackberry Pearl 8100 SIM Card Replacement

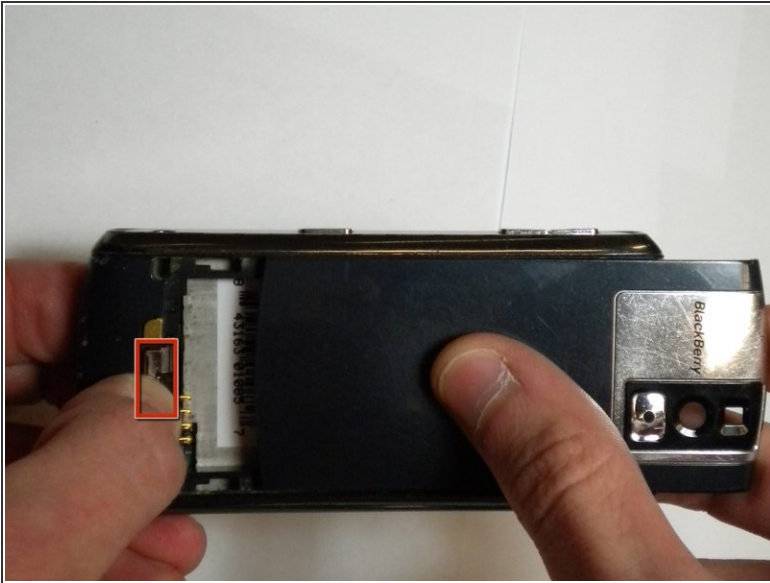
Written By: Robert Cronin



INTRODUCTION

Follow this guide to install a SIM card in the Blackberry Pearl 8100.

Step 1 — Battery



i Before working on the phone, be sure that the phone is turned off.

- Begin by removing the back panel; this can be done by pressing the silver button on the backside of the BlackBerry 8100, while simultaneously sliding the back panel off.

Step 2



- Remove the battery located directly below back panel.

Step 3 — SIM Card



- Slide the larger of the two metal casings upward (in the direction pointed to as “unlock”).

Step 4



- Lift the metal casing.

Step 5



- Insert an SD Card.

To reassemble your device, follow these instructions in reverse order.