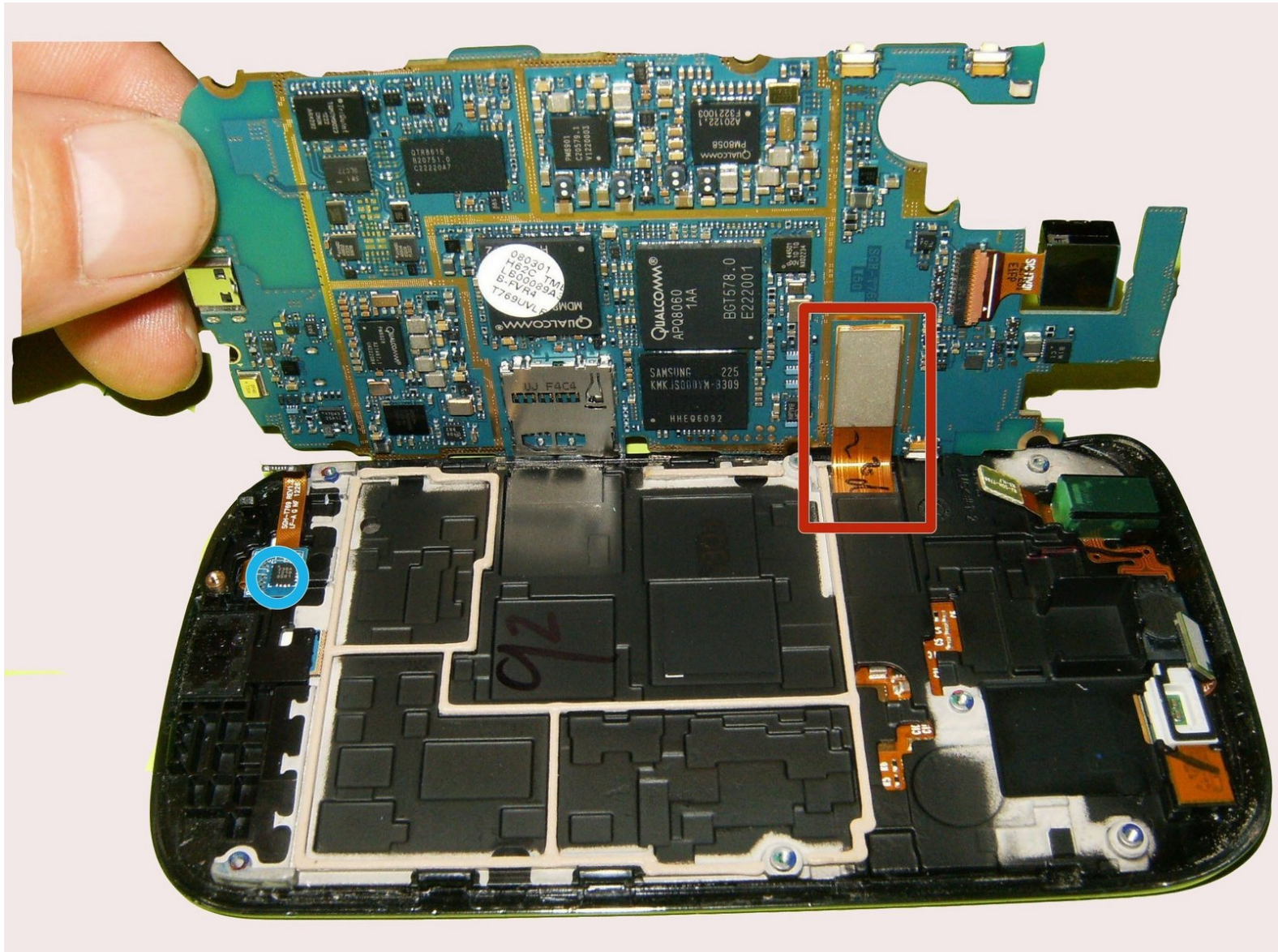




Samsung Galaxy S Blaze Display Assembly Replacement

This guide will show the steps toward replacing the screen and digitizer for the Samsung Galaxy S.

Written By: Dustin



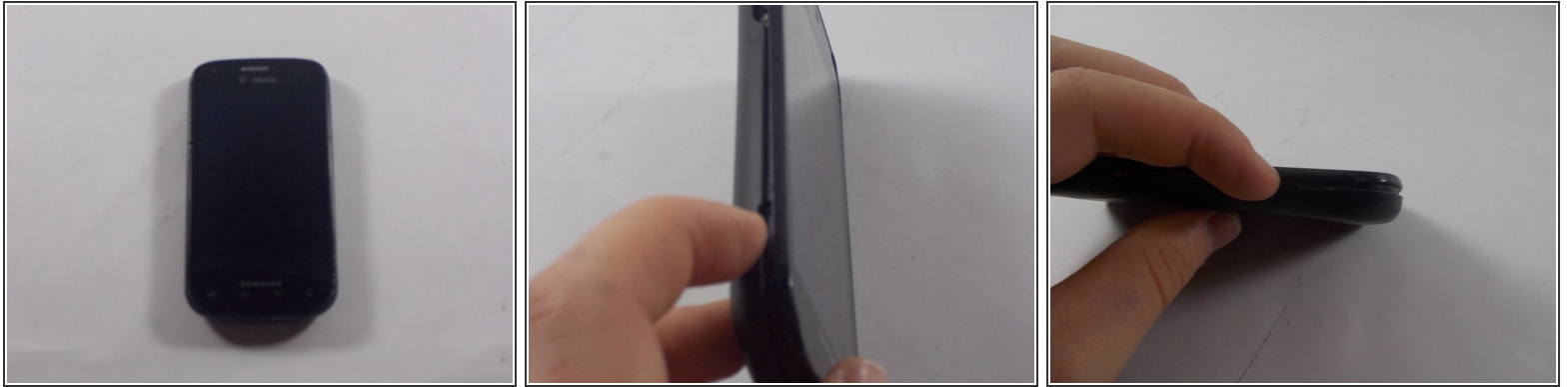
**TOOLS:**

- [Phillips #00 Screwdriver \(1\)](#)

**PARTS:**

- [Samsung Galaxy S Blaze Screen Housing \(1\)](#)

Step 1 — Power Button



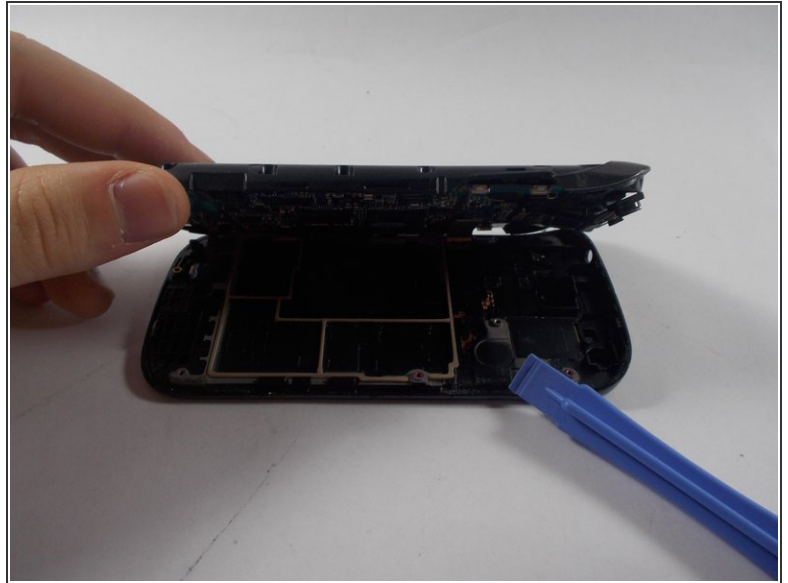
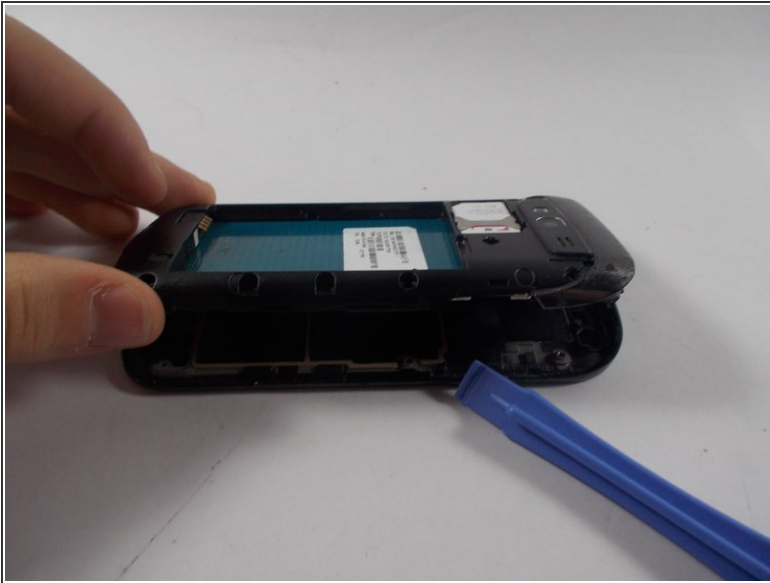
- Start by removing the back plastic cover by lifting it up from the notch on the left side of the phone

Step 2



- Remove the battery and use a small Phillips head screwdriver to remove the marked up screws

Step 3



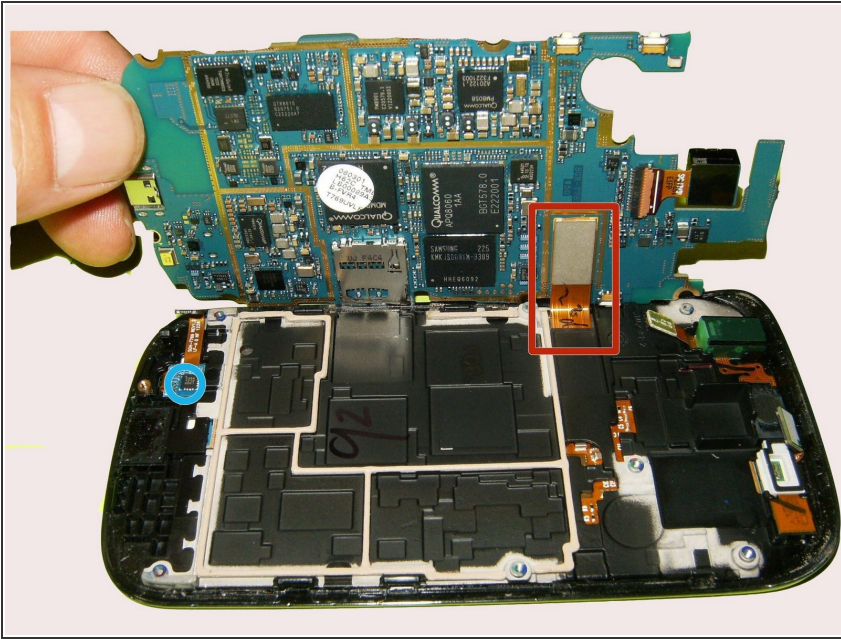
- Use a flat tool to pry the two plastic cases apart
- The latches are very strong, so don't be afraid to use force

Step 4



- Locate the missing button slot
- Place in replacement button, and close the plastic housing around it
- The button should be fully functional now, repeat past steps to reassemble the phone

Step 5 — Display Assembly



- Gently remove the two ribbon cables as shown.
- Connect the new screen to the main motherboard just as the same way they were connected.
- Be careful not to crimp or bend the ribbon cables, as this will ruin the replacement.
- Repeat the steps in reverse order to reassemble the phone.

To reassemble your device, follow these instructions in reverse order.